

Human SPINK5 Knockdown Cell Line (WB-Validated)



Catalog #: C61709

Aliases

SPINK5; Serine Peptidase Inhibitor Kazal Type 5; LEKTI; VAKTI; LETKI; NETS; NS; Lympho-Epithelial Kazal-Type-Related Inhibitor; Lymphoepithelial Kazal-Type-Related Inhibitor; Serine Protease Inhibitor Kazal-Type 5; FLJ21544; FLJ97536; FLJ97596 ; FLJ99794; Serine Protease Inhibitor, Kazal Type 5; DKFZp686K19184; DKFZP686K19184

Background

Gene Name: SPINK5

NCBI Gene Entry: [11005](#)

Storage

Store at liquid nitrogen for 1 year.

Kit Components

1. Human SPINK5 Knockdown Cell Line (Wb-Validated)
2. Wild-type cell line

Parental Cell Line

Human cell line supplied by the client

Validation Methods

RT-qPCR, Western blotting (WB)

Shipping

Shipped on Dry Ice.

Instructions For Use

This knockdown cell line should be paired with wild-type cell line for use.

Note: This product is for research use only.

Validation Data

SUPPORT

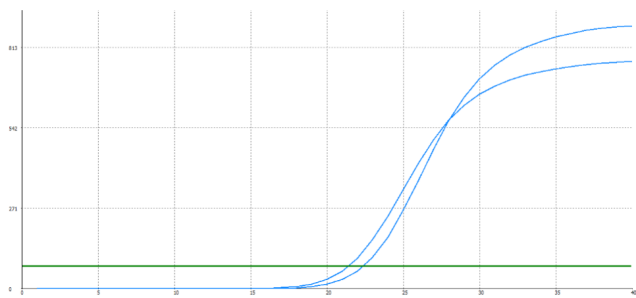
SUPPORT@GENUINBIOTECH.COM
TEL: +1-540-855-7041

ORDERS

SALES@GENUINBIOTECH.COM
FAX: +1-540-855-7041

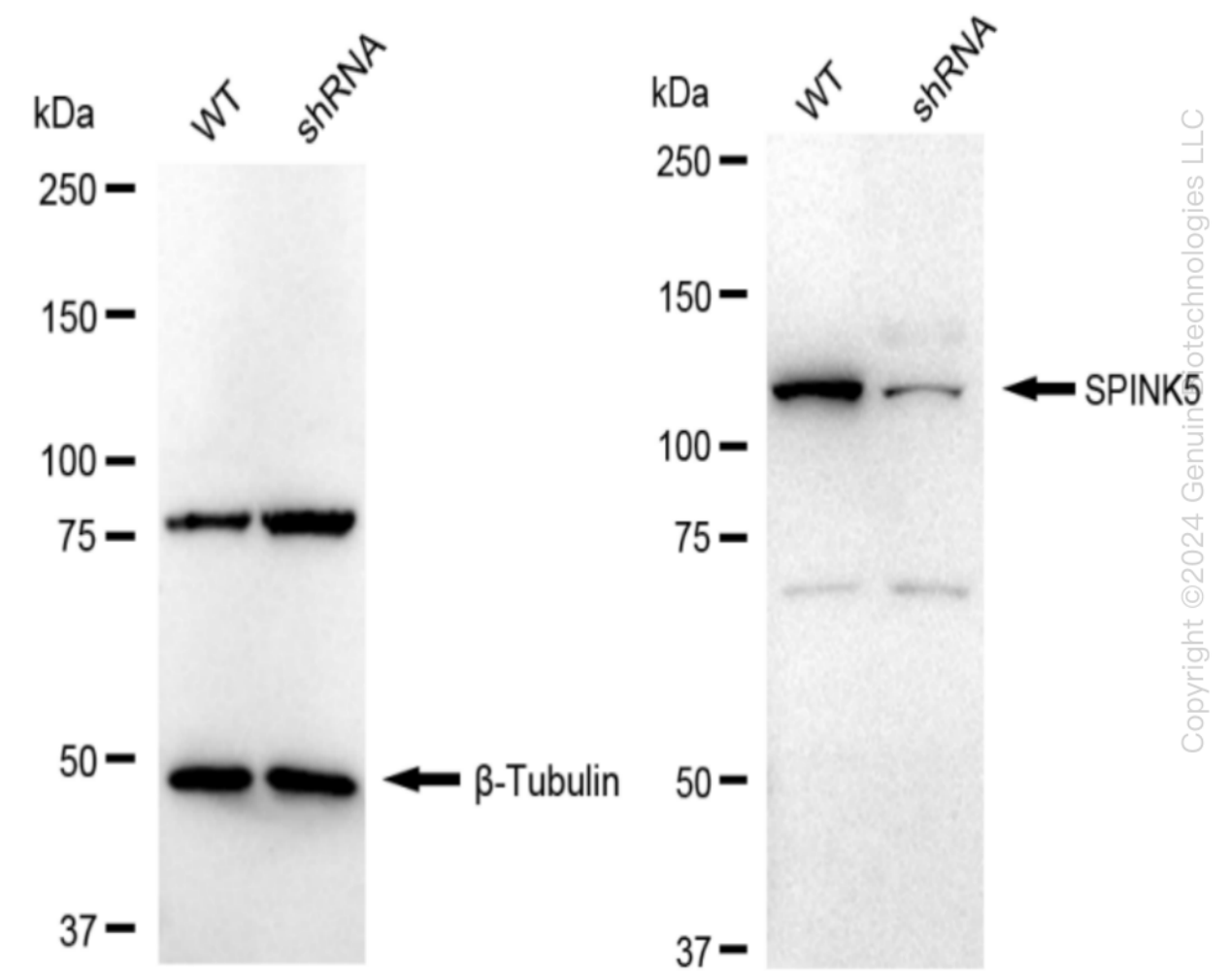
WWW.GENUINBIOTECH.COM

Human SPINK5 Knockdown Cell Line (WB-Validated)



Genotype	Ct Value
Wild-Type	20.84
Knock-Down	22.09
Δ Ct (Ct _{KD} -Ct _{WT})	1.25
% mRNA Reduction	↓ 58%

RT-qPCR analysis. HeLa cells were infected with SPINK5-specific shRNA lentiviral particles, total RNA was extracted from wild-type and knockdown cells, RT-qPCR was performed using gene-specific primers. Δ Ct (Ct_{KD}-Ct_{WT}) was used to calculate mRNA reduction (%) between wild-type and knockdown cells using the following formula: $(1-1/2^{\Delta$ Ct) x 100%.



Western blotting analysis. SPINK5 protein expression in wild-type (WT) and shRNA knockdown (KD) HeLa cells was detected using Western blotting. β -Tubulin served as a loading control. The blots were incubated with primary antibodies (Cat#61709, 1:5,000) against SPINK5 and β -

SUPPORT

SUPPORT@GENUINBIOTECH.COM
TEL: +1-540-855-7041

ORDERS

SALES@GENUINBIOTECH.COM
FAX: +1-540-855-7041

Human SPINK5 Knockdown Cell Line (WB-Validated)

PAGE 3

Tubulin, respectively, followed by incubating with HRP-conjugated goat anti-rabbit secondary antibody (Cat#201, 1:20,000). Images were developed using FeQ™ ECL Substrate Kit (Cat#226).

SUPPORT

SUPPORT@GENUINBIOTECH.COM
TEL: +1-540-855-7041

ORDERS

SALES@GENUINBIOTECH.COM
FAX: +1-540-855-7041

WWW.GENUINBIOTECH.COM