

# Human SUPT5H Knockdown Cell Line (WB-Validated)



**Catalog #: C61718**

## Aliases

SUPT5H; SPT5 Homolog, DSIF Elongation Factor Subunit; SPT5H; SPT5; DRB Sensitivity-Inducing Factor 160 KDa Subunit; DRB Sensitivity-Inducing Factor Large Subunit; Transcription Elongation Factor SPT5; Tat-Cotransactivator 1 Protein; DSIF Large Subunit; DSIF P160; FLJ34157; HSPT5; Suppressor Of Ty 5 Homolog (S. Cerevisiae); Suppressor Of Ty (S.Cerevisiae) 5 Homolog; Suppressor Of Ty 5 Homolog; Tat-CT1 Protein; Tat-CT1

## Background

Gene Name: SUPT5H  
NCBI Gene Entry: [6829](#)

## Storage

Store at liquid nitrogen for 1 year.

## Kit Components

1. Human SUPT5H Knockdown Cell Line (Wb-Validated)
2. Wild-type cell line

## Parental Cell Line

Human cell line supplied by the client

## Validation Methods

RT-qPCR, Western blotting (WB)

## Shipping

Shipped on Dry Ice.

## Instructions For Use

This knockdown cell line should be paired with wild-type cell line for use.

**Note:** This product is for research use only.

## Validation Data

---

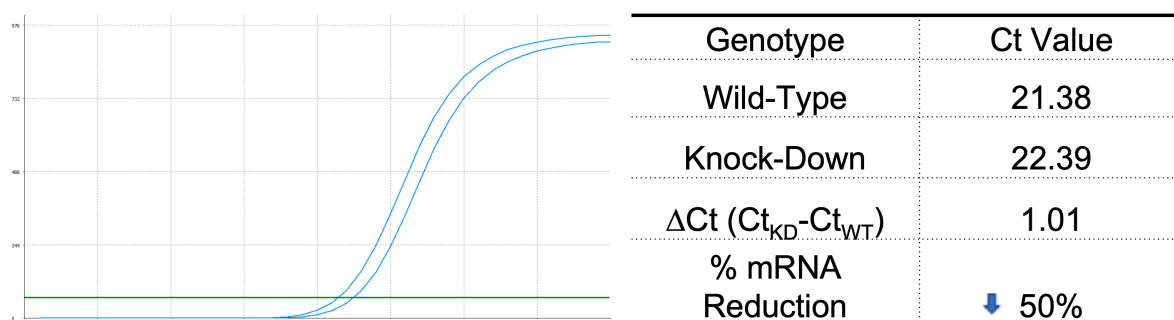
### SUPPORT

SUPPORT@GENUINBIOTECH.COM  
TEL: +1-540-855-7041

### ORDERS

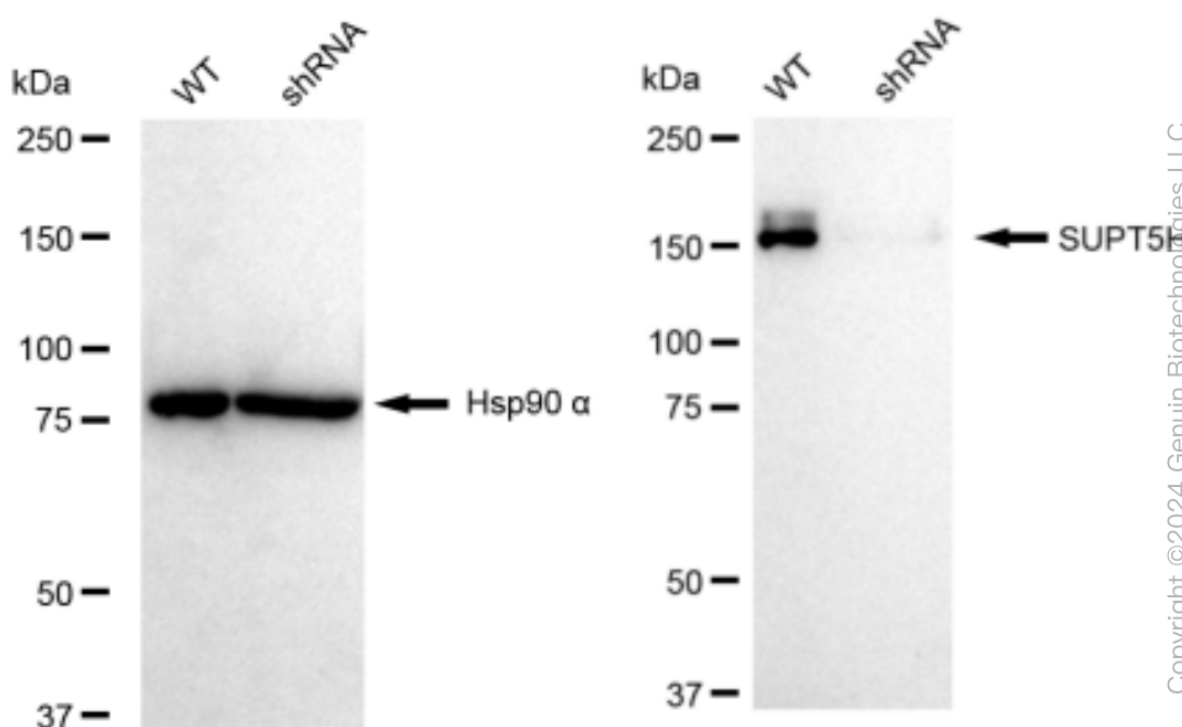
SALES@GENUINBIOTECH.COM  
FAX: +1-540-855-7041

[WWW.GENUINBIOTECH.COM](http://WWW.GENUINBIOTECH.COM)



Copyright ©2025 Genuin Biotechnologies LLC

RT-qPCR analysis. HeLa cells were infected with SUPT5H-specific shRNA lentiviral particles, total RNA was extracted from wild-type and knockdown cells, RT-qPCR was performed using gene-specific primers.  $\Delta Ct (Ct_{KD} - Ct_{WT})$  was used to calculate mRNA reduction (%) between wild-type and knockdown cells using the following formula:  $(1 - 1/2^{\Delta Ct}) \times 100\%$ .



Copyright ©2024 Genuin Biotechnologies LLC

Western blotting analysis. SUPT5H protein expression in wild-type (WT) and shRNA knockdown (KD) HeLa cells was detected using Western blotting. Hsp90  $\alpha$  served as a loading control. The blots were incubated with primary antibodies against SUPT5H and Hsp90  $\alpha$ , respectively, followed by incubating with HRP-conjugated goat anti-rabbit secondary antibody. Images were developed using FeQ™ ECL Substrate Kit.