

Human MAPK14 Knockdown Cell Line (WB-Validated)



Catalog #: C61801

Aliases

MAPK14; Mitogen-Activated Protein Kinase 14; PRKM14; PRKM15; CSBP1; CSBP2; CSPB1; P38; Mitogen-Activated Protein Kinase P38 Alpha; MAX-Interacting Protein; CSAID-Binding Protein; MAP Kinase P38 Alpha; P38 MAP Kinase; MAP Kinase 14; EC 2.7.11.24; SAPK2A; Mxi2; CSBP; MXI2; Cytokine Suppressive Anti-Inflammatory Drug Binding Protein; Cytokine Suppressive Anti-Inflammatory Drug-Binding Protein; P38 Mitogen Activated Protein Kinase; Stress-Activated Protein Kinase 2A; Stress-Activated Protein Kinase 2a; MAP Kinase Mxi2; MAP Kinase MXI2; P38alpha Exip 3; EC 2.7.11; P38ALPHA; MAPK 14; SAPK2a; EXIP; RK

Background

Gene Name: MAPK14

NCBI Gene Entry: [1432](#)

Storage

Store at liquid nitrogen for 1 year.

Kit Components

1. Human MAPK14 Knockdown Cell Line (Wb-Validated)
2. Wild-type cell line

Parental Cell Line

Human cell line supplied by the client

Validation Methods

RT-qPCR, Western blotting (WB)

Shipping

Shipped on Dry Ice.

Instructions For Use

This knockdown cell line should be paired with wild-type cell line for use.

Note: This product is for research use only.

Validation Data

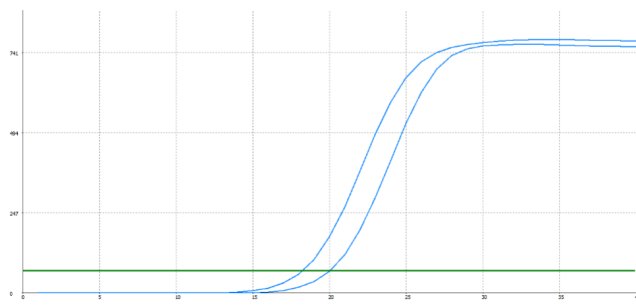
SUPPORT

SUPPORT@GENUINBIOTECH.COM
TEL: +1-540-855-7041

ORDERS

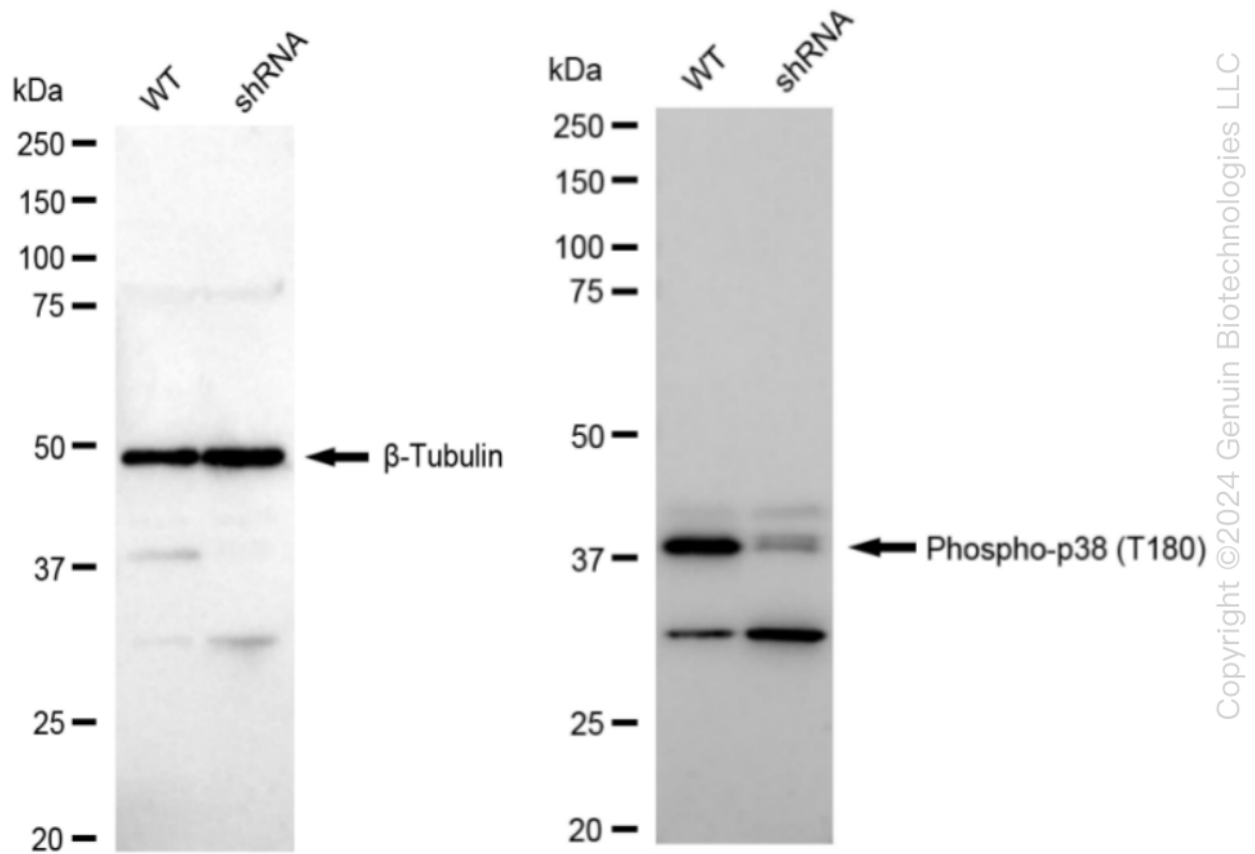
SALES@GENUINBIOTECH.COM
FAX: +1-540-855-7041

WWW.GENUINBIOTECH.COM



Genotype	Ct Value
Wild-Type	17.9
Knock-Down	19.59
ΔCt ($Ct_{KD}-Ct_{WT}$)	1.69
% mRNA Reduction	↓ 69%

RT-qPCR analysis. HT-1080 cells were infected with MAPK14-specific shRNA lentiviral particles, total RNA was extracted from wild-type and knockdown cells, RT-qPCR was performed using gene-specific primers. ΔCt ($Ct_{KD}-Ct_{WT}$) was used to calculate mRNA reduction (%) between wild-type and knockdown cells using the following formula: $(1-1/2^{\Delta Ct}) \times 100\%$.



Western blotting analysis. MAPK14 protein expression in wild-type (WT) and shRNA knockdown (KD) HT-1080 cells was detected using Western blotting. β -Tubulin served as a loading control. The blots were incubated with primary antibodies (Cat#61801, 1:5,000) against MAPK14 and β -Tubulin, respectively, followed by incubating with HRP-conjugated goat anti-rabbit secondary antibody (Cat#201, 1:20,000). Images were developed using FeQ™ ECL Substrate Kit (Cat#226).