

Human MMUT Knockdown Cell Line (WB-Validated)



Catalog #: C61805

Aliases

MMUT; Methylmalonyl-CoA Mutase; MCM; MUT; Methylmalonyl-CoA Mutase, Mitochondrial; Methylmalonyl Coenzyme A Mutase; Methylmalonyl-CoA Isomerase; EC 5.4.99.2; Methylmalonyl-CoA Mutase Variant C.613_615delGAA; Methylmalonyl-CoA Mutase Variant C.1495G>A; Methylmalonyl-CoA Mutase Variant C.2011A>G; Methylmalonyl-CoA Mutase Variant C.2150G>T; Methylmalonyl-CoA Mutase Variant C.322C>T; Methylmalonyl-CoA Mutase Variant C.636G>A; Methylmalonyl-CoA Mutase Variant C.643G>A; Methylmalonyl-CoA Mutase C.*192delA; Methylmalonyl-CoA Mutase C.*51C>G; Mutant Methylmalonyl CoA Mutase

Background

Gene Name: MMUT

NCBI Gene Entry: [4594](#)

Storage

Store at liquid nitrogen for 1 year.

Kit Components

1. Human MMUT Knockdown Cell Line (Wb-Validated)
2. Wild-type cell line

Parental Cell Line

Human cell line supplied by the client

Validation Methods

RT-qPCR, Western blotting (WB)

Shipping

Shipped on Dry Ice.

Instructions For Use

This knockdown cell line should be paired with wild-type cell line for use.

Note: This product is for research use only.

Validation Data

SUPPORT

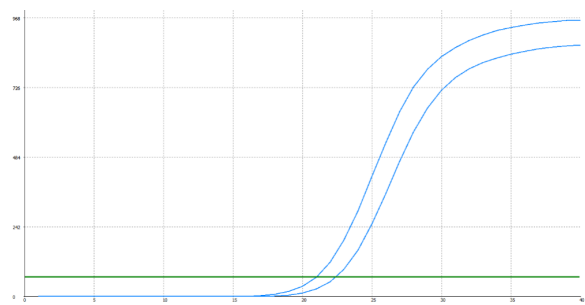
SUPPORT@GENUINBIOTECH.COM
TEL: +1-540-855-7041

ORDERS

SALES@GENUINBIOTECH.COM
FAX: +1-540-855-7041

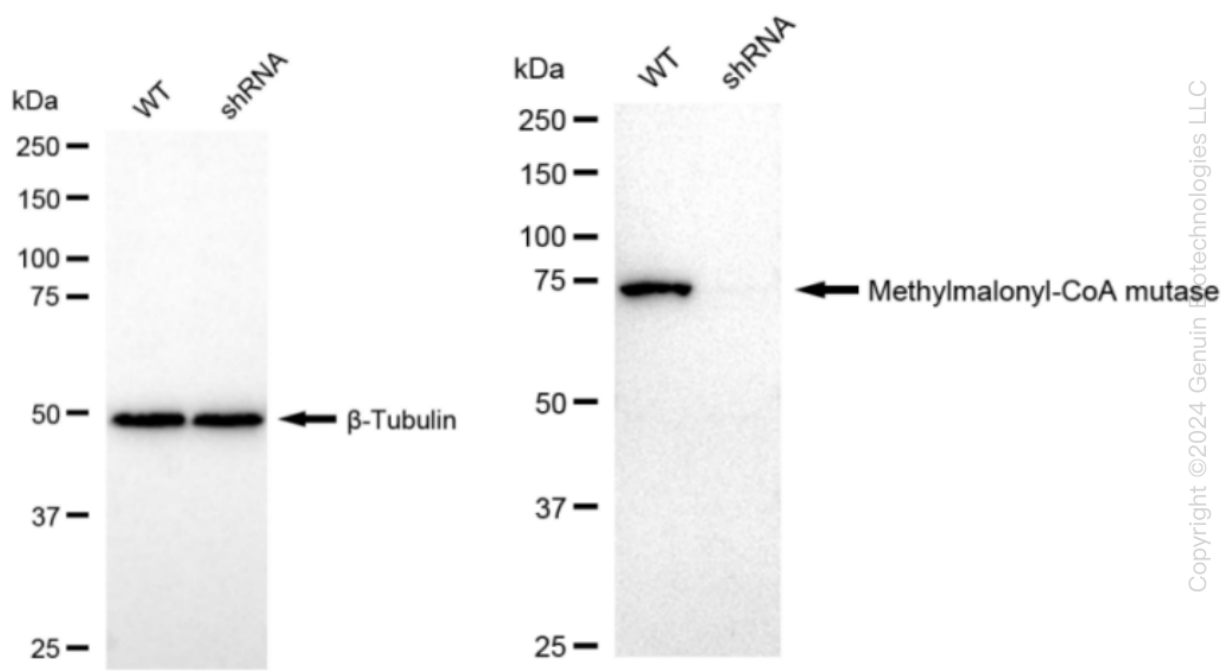
WWW.GENUINBIOTECH.COM

Human MMUT Knockdown Cell Line (WB-Validated)



Genotype	Ct Value
Wild-Type	21.03
Knock-Down	22.25
$\Delta Ct (Ct_{KD}-Ct_{WT})$	1.22
% mRNA Reduction	↓ 57%

RT-qPCR analysis. HeLa cells were infected with MMUT-specific shRNA lentiviral particles, total RNA was extracted from wild-type and knockdown cells, RT-qPCR was performed using gene-specific primers. $\Delta Ct (Ct_{KD}-Ct_{WT})$ was used to calculate mRNA reduction (%) between wild-type and knockdown cells using the following formula: $(1-1/2^{\Delta Ct}) \times 100\%$.



Western blotting analysis. MMUT protein expression in wild-type (WT) and shRNA knockdown (KD) HeLa cells was detected using Western blotting. β -Tubulin served as a loading control. The blots were incubated with primary antibodies against MMUT and β -Tubulin, respectively, followed by incubating with HRP-conjugated goat anti-rabbit secondary antibody. Images were developed using FeQ™ ECL Substrate Kit.

SUPPORT

SUPPORT@GENUINBIOTECH.COM
TEL: +1-540-855-7041

ORDERS

SALES@GENUINBIOTECH.COM
FAX: +1-540-855-7041