

## Human MTAP Knockdown Cell Line (WB-Validated)



**Catalog #: C61807**

### Aliases

MTAP; Methylthioadenosine Phosphorylase; MSAP; S-Methyl-5'-Thioadenosine Phosphorylase; 5'-Methylthioadenosine Phosphorylase; MTA Phosphorylase; MTAPase; C86fus; Epididymis Secretory Sperm Binding Protein; Epididymis Luminal Protein 249; MeSAdo Phosphorylase; EC 2.4.2.28; HEL-249; DMSMFH; C86FUS; DMSFH; LGMBF; BDMF

### Background

Gene Name: MTAP

NCBI Gene Entry: [4507](#)

### Storage

Store at liquid nitrogen for 1 year.

### Kit Components

1. Human MTAP Knockdown Cell Line (Wb-Validated)
2. Wild-type cell line

### Parental Cell Line

Human cell line supplied by the client

### Validation Methods

RT-qPCR, Western blotting (WB)

### Shipping

Shipped on Dry Ice.

### Instructions For Use

This knockdown cell line should be paired with wild-type cell line for use.

**Note:** This product is for research use only.

### Validation Data

---

#### SUPPORT

SUPPORT@GENUINBIOTECH.COM  
TEL: +1-540-855-7041

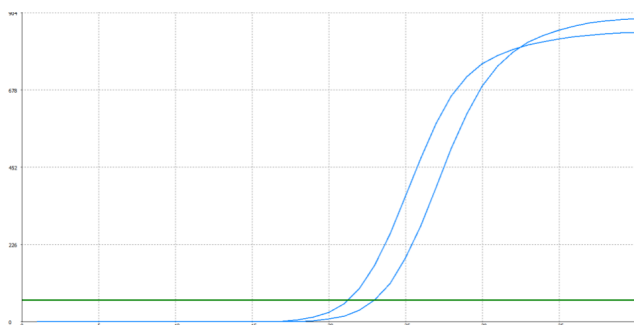
#### ORDERS

SALES@GENUINBIOTECH.COM  
FAX: +1-540-855-7041

[WWW.GENUINBIOTECH.COM](http://WWW.GENUINBIOTECH.COM)

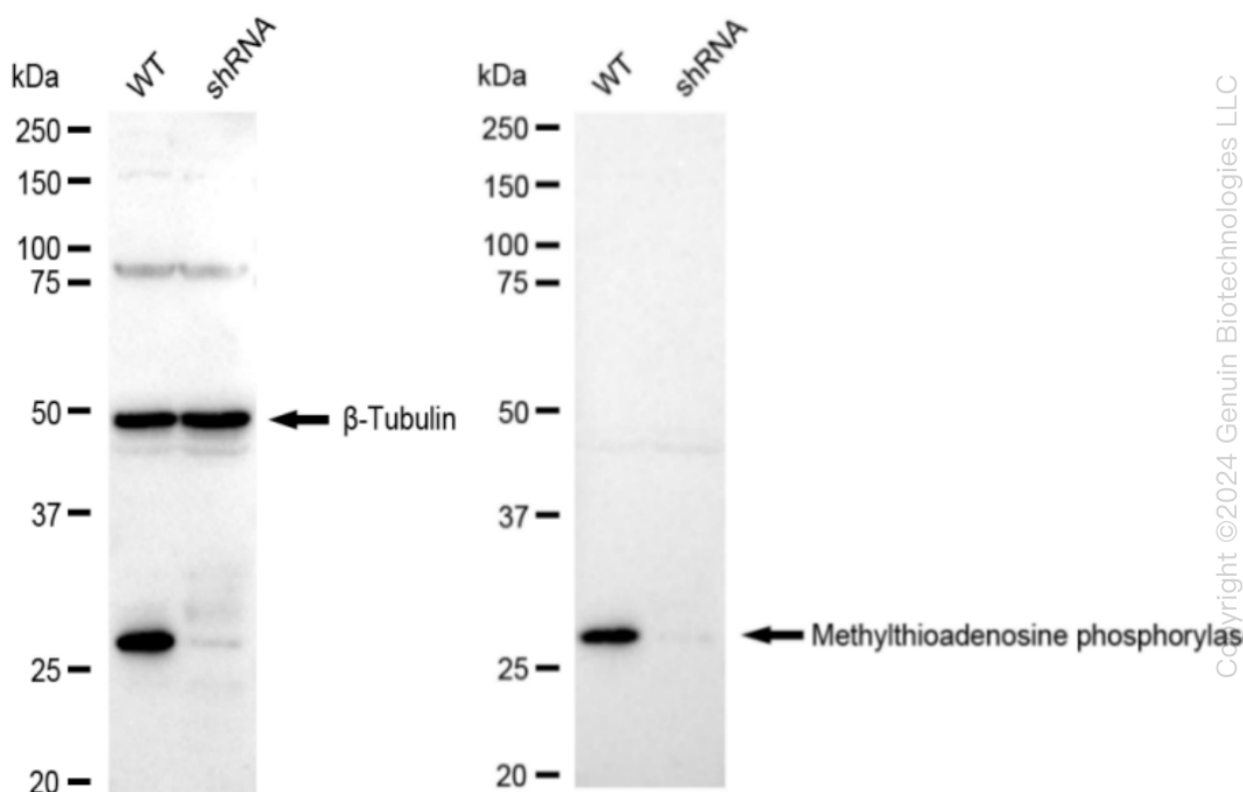
## Human MTAP Knockdown Cell Line (WB-Validated)

PAGE 2



Genotype	Ct Value
Wild-Type	21.16
Knock-Down	22.98
$\Delta Ct (Ct_{KD} - Ct_{WT})$	1.82
% mRNA Reduction	↓ 72%

RT-qPCR analysis. HeLa cells were infected with MTAP-specific shRNA lentiviral particles, total RNA was extracted from wild-type and knockdown cells, RT-qPCR was performed using gene-specific primers.  $\Delta Ct (Ct_{KD} - Ct_{WT})$  was used to calculate mRNA reduction (%) between wild-type and knockdown cells using the following formula:  $(1 - 1/2^{\Delta Ct}) \times 100\%$ .



Western blotting analysis. MTAP protein expression in wild-type (WT) and shRNA knockdown (KD) HeLa cells was detected using Western blotting.  $\beta$ -Tubulin served as a loading control. The blots were incubated with primary antibodies (Cat#61807, 1:5,000) against MTAP and  $\beta$ -Tubulin, respectively, followed by incubating with HRP-conjugated goat anti-rabbit secondary antibody (Cat#201, 1:20,000). Images were developed using FeQ™ ECL Substrate Kit (Cat#226).

### SUPPORT

SUPPORT@GENUINBIOTECH.COM  
TEL: +1-540-855-7041

### ORDERS

SALES@GENUINBIOTECH.COM  
FAX: +1-540-855-7041

WWW.GENUINBIOTECH.COM