

Human NDEL1 Knockdown Cell Line (WB-Validated)



Catalog #: C61808

Aliases

NDEL1; NudE Neurodevelopment Protein 1 Like 1; MITAP1; NUDEL; NDE1L1; NDE2; Nuclear Distribution Protein NudE-Like 1; Mitosin-Associated Protein 1; Protein Nudel; EOPA; NudE Nuclear Distribution Gene E Homolog (A. Nidulans)-Like 1; NudE Nuclear Distribution E Homolog (A. Nidulans)-Like 1; NudE Nuclear Distribution Gene E Homolog-Like 1; NudE Nuclear Distribution E Homolog-Like 1; Mitosin-Associated Protein MITAP1; Endooligopeptidase A

Background

Gene Name: NDEL1

NCBI Gene Entry: [81565](#)

Storage

Store at liquid nitrogen for 1 year.

Kit Components

1. Human NDEL1 Knockdown Cell Line (Wb-Validated)
2. Wild-type cell line

Parental Cell Line

Human cell line supplied by the client

Validation Methods

RT-qPCR, Western blotting (WB)

Shipping

Shipped on Dry Ice.

Instructions For Use

This knockdown cell line should be paired with wild-type cell line for use.

Note: This product is for research use only.

Validation Data

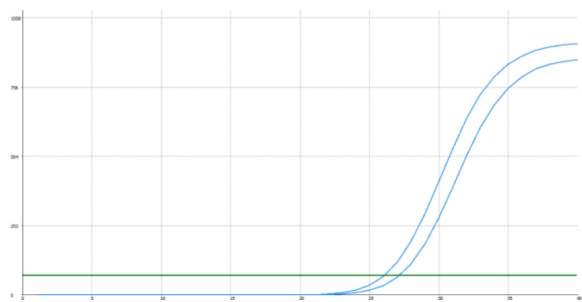
SUPPORT

SUPPORT@GENUINBIOTECH.COM
TEL: +1-540-855-7041

ORDERS

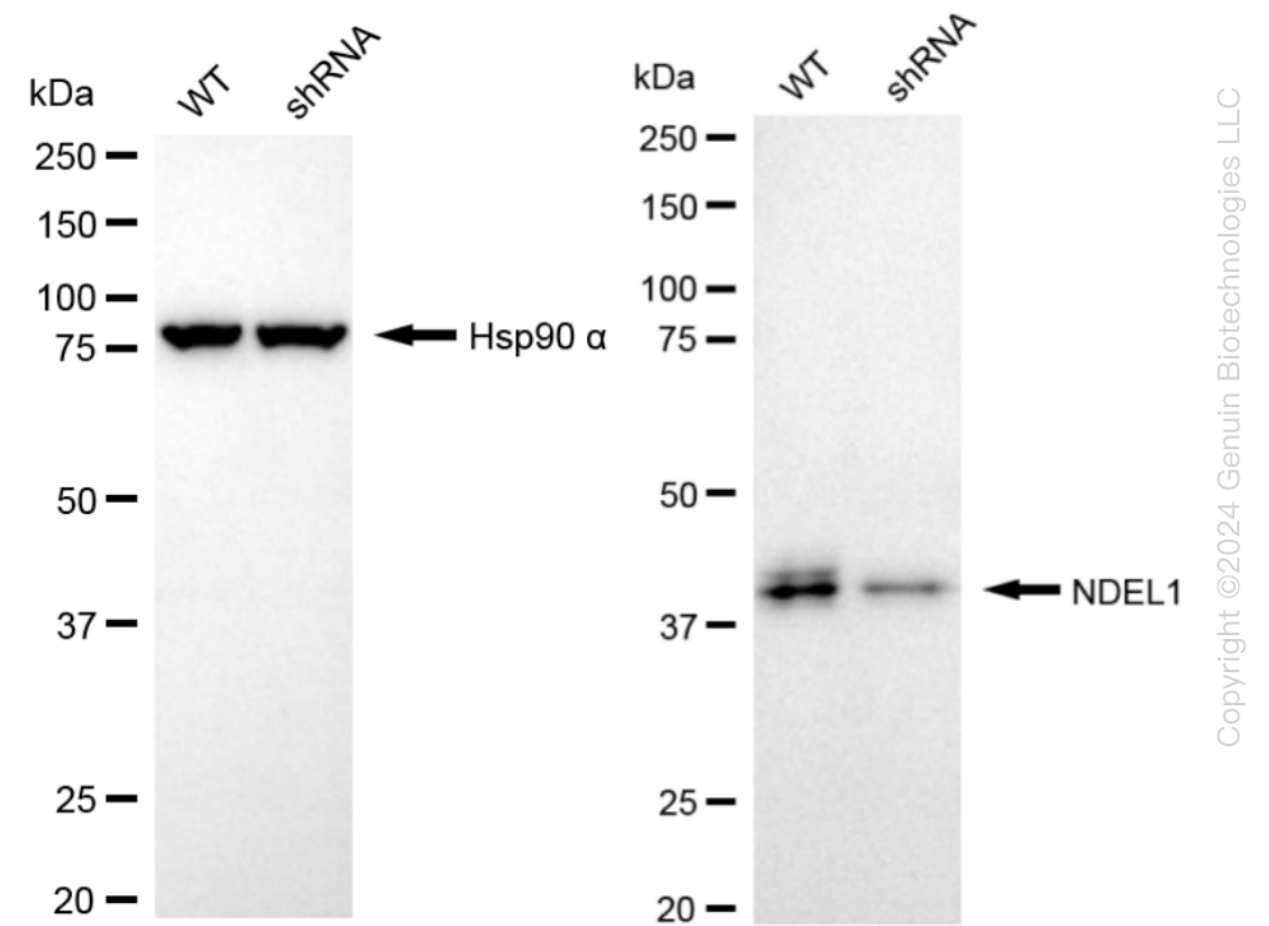
SALES@GENUINBIOTECH.COM
FAX: +1-540-855-7041

WWW.GENUINBIOTECH.COM



Genotype	Ct Value
Wild-Type	25.95
Knock-Down	26.90
$\Delta Ct (Ct_{KD}-Ct_{WT})$	0.95
% mRNA Reduction	↓ 48%

RT-qPCR analysis. HeLa cells were infected with NDEL1-specific shRNA lentiviral particles, total RNA was extracted from wild-type and knockdown cells, RT-qPCR was performed using gene-specific primers. $\Delta Ct (Ct_{KD}-Ct_{WT})$ was used to calculate mRNA reduction (%) between wild-type and knockdown cells using the following formula: $(1-1/2^{\Delta Ct}) \times 100\%$.



Western blotting analysis. NDEL1 protein expression in wild-type (WT) and shRNA knockdown (KD) HeLa cells was detected using Western blotting. Hsp90 α served as a loading control. The blots were incubated with primary antibodies (Cat#61808, 1:5,000) against NDEL1 and Hsp90 α , respectively, followed by incubating with HRP-conjugated goat anti-rabbit secondary antibody

Human NDEL1 Knockdown Cell Line (WB-Validated)

PAGE 3

(Cat#201, 1:20,000). Images were developed using FeQ™ ECL Substrate Kit (Cat#226).

SUPPORT

SUPPORT@GENUINBIOTECH.COM
TEL: +1-540-855-7041

ORDERS

SALES@GENUINBIOTECH.COM
FAX: +1-540-855-7041

WWW.GENUINBIOTECH.COM