

Human OXGR1 Knockdown Cell Line (WB-Validated)



Catalog #: C61810

Aliases

OXGR1; OxoglutaRate Receptor 1; P2RY15; P2Y15; Alpha-KetoglutaRate Receptor 1; 2-OxoglutaRate Receptor 1; GPR80; GPR99; AKGR; OxoglutaRate (Alpha-KetoglutaRate) Receptor 1; G Protein-Coupled Receptor 80; G-Protein Coupled Receptor 99; P2Y-Like Nucleotide Receptor; P2Y Purinoceptor 15; P2Y-Like GPCR; Seven Transmembrane Helix Receptor; G-Protein Coupled Receptor 80; CAON2

Background

Gene Name: OXGR1

NCBI Gene Entry: [27199](#)

Storage

Store at liquid nitrogen for 1 year.

Kit Components

1. Human OXGR1 Knockdown Cell Line (Wb-Validated)
2. Wild-type cell line

Parental Cell Line

Human cell line supplied by the client

Validation Methods

RT-qPCR, Western blotting (WB)

Shipping

Shipped on Dry Ice.

Instructions For Use

This knockdown cell line should be paired with wild-type cell line for use.

Note: This product is for research use only.

Validation Data

SUPPORT

SUPPORT@GENUINBIOTECH.COM
TEL: +1-540-855-7041

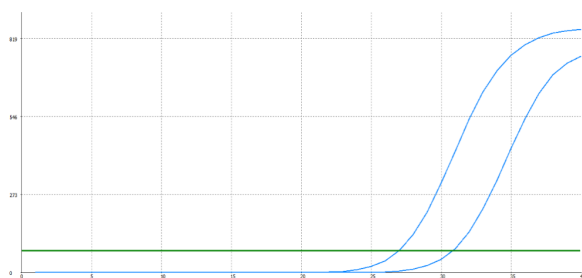
ORDERS

SALES@GENUINBIOTECH.COM
FAX: +1-540-855-7041

WWW.GENUINBIOTECH.COM

Human OXGR1 Knockdown Cell Line (WB-Validated)

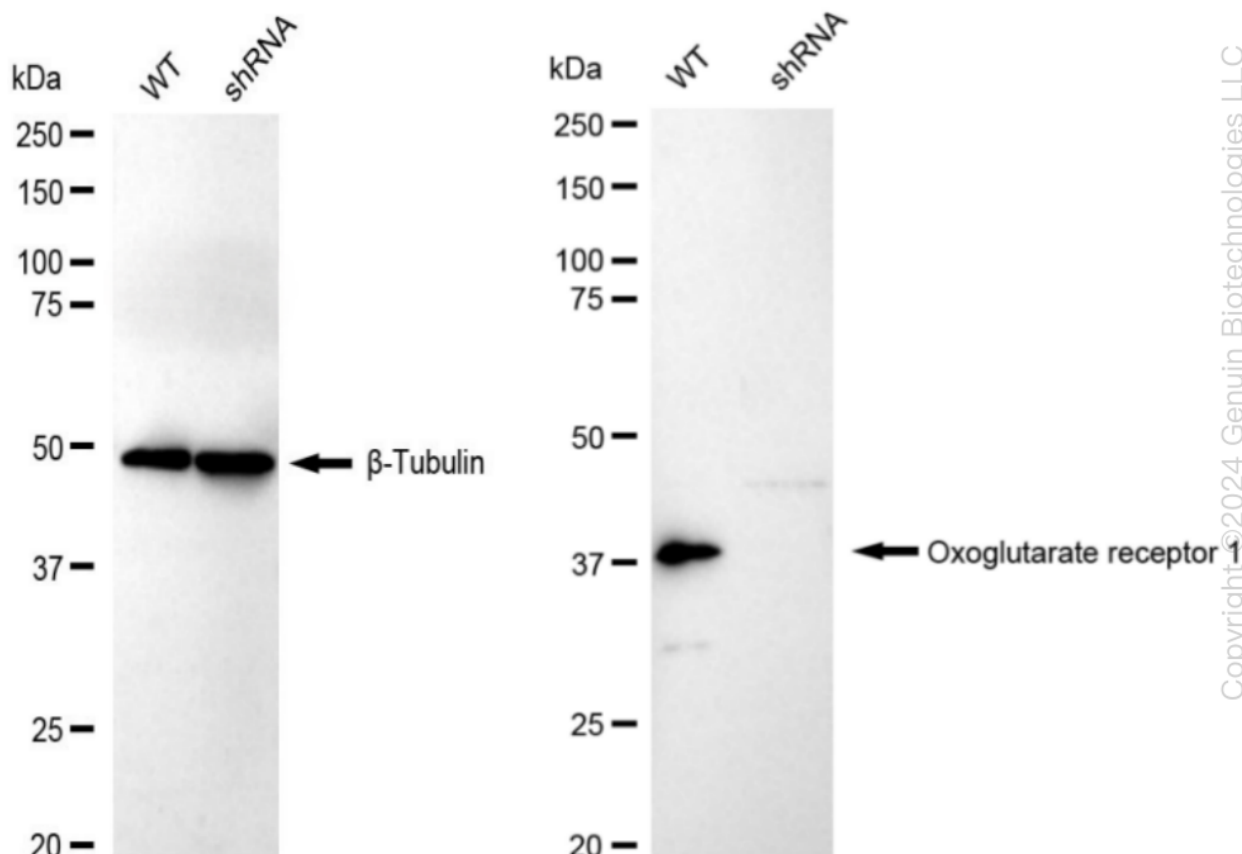
PAGE 2



| Genotype | Ct Value |
|---------------------------------|----------|
| Wild-Type | 26.54 |
| Knock-Down | 30.21 |
| $\Delta Ct (Ct_{KD} - Ct_{WT})$ | 3.67 |
| % mRNA Reduction | ↓ 92% |

Copyright ©2024 Genuin Biotechnologies LLC

RT-qPCR analysis. HeLa cells were infected with OXGR1-specific shRNA lentiviral particles, total RNA was extracted from wild-type and knockdown cells, RT-qPCR was performed using gene-specific primers. $\Delta Ct (Ct_{KD} - Ct_{WT})$ was used to calculate mRNA reduction (%) between wild-type and knockdown cells using the following formula: $(1 - 1/2^{\Delta Ct}) \times 100\%$.



Copyright ©2024 Genuin Biotechnologies LLC

Western blotting analysis. OXGR1 protein expression in wild-type (WT) and shRNA knockdown (KD) HeLa cells was detected using Western blotting. β -Tubulin served as a loading control. The blots were incubated with primary antibodies (Cat#61810, 1:5,000) against OXGR1 and β -Tubulin, respectively, followed by incubating with HRP-conjugated goat anti-rabbit secondary antibody (Cat#201, 1:20,000). Images were developed using FeQ™ ECL Substrate Kit (Cat#226).

SUPPORT

SUPPORT@GENUINBIOTECH.COM
TEL: +1-540-855-7041

ORDERS

SALES@GENUINBIOTECH.COM
FAX: +1-540-855-7041

WWW.GENUINBIOTECH.COM

SUPPORT

SUPPORT@GENUINBIOTECH.COM
TEL: +1-540-855-7041

ORDERS

SALES@GENUINBIOTECH.COM
FAX:+1-540-855-7041

WWW.GENUINBIOTECH.COM