

## Human SMS Knockdown Cell Line (WB-Validated)



**Catalog #: C61824**

### Aliases

SMS; Spermine Synthase; SPMSY; MRSR; Spermidine Aminopropyltransferase; SpS; SRS; Snyder-Robinson X-Linked Mental Retardation Syndrome; EC 2.5.1.22; MRXSSR; SP

### Background

Gene Name: SMS

NCBI Gene Entry: [6611](#)

### Storage

Store at liquid nitrogen for 1 year.

### Kit Components

1. Human SMS Knockdown Cell Line (Wb-Validated)
2. Wild-type cell line

### Parental Cell Line

Human cell line supplied by the client

### Validation Methods

RT-qPCR, Western blotting (WB)

### Shipping

Shipped on Dry Ice.

### Instructions For Use

This knockdown cell line should be paired with wild-type cell line for use.

**Note:** This product is for research use only.

### Validation Data

---

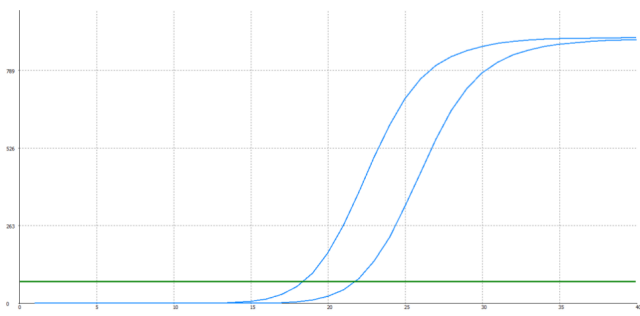
#### SUPPORT

SUPPORT@GENUINBIOTECH.COM  
TEL: +1-540-855-7041

#### ORDERS

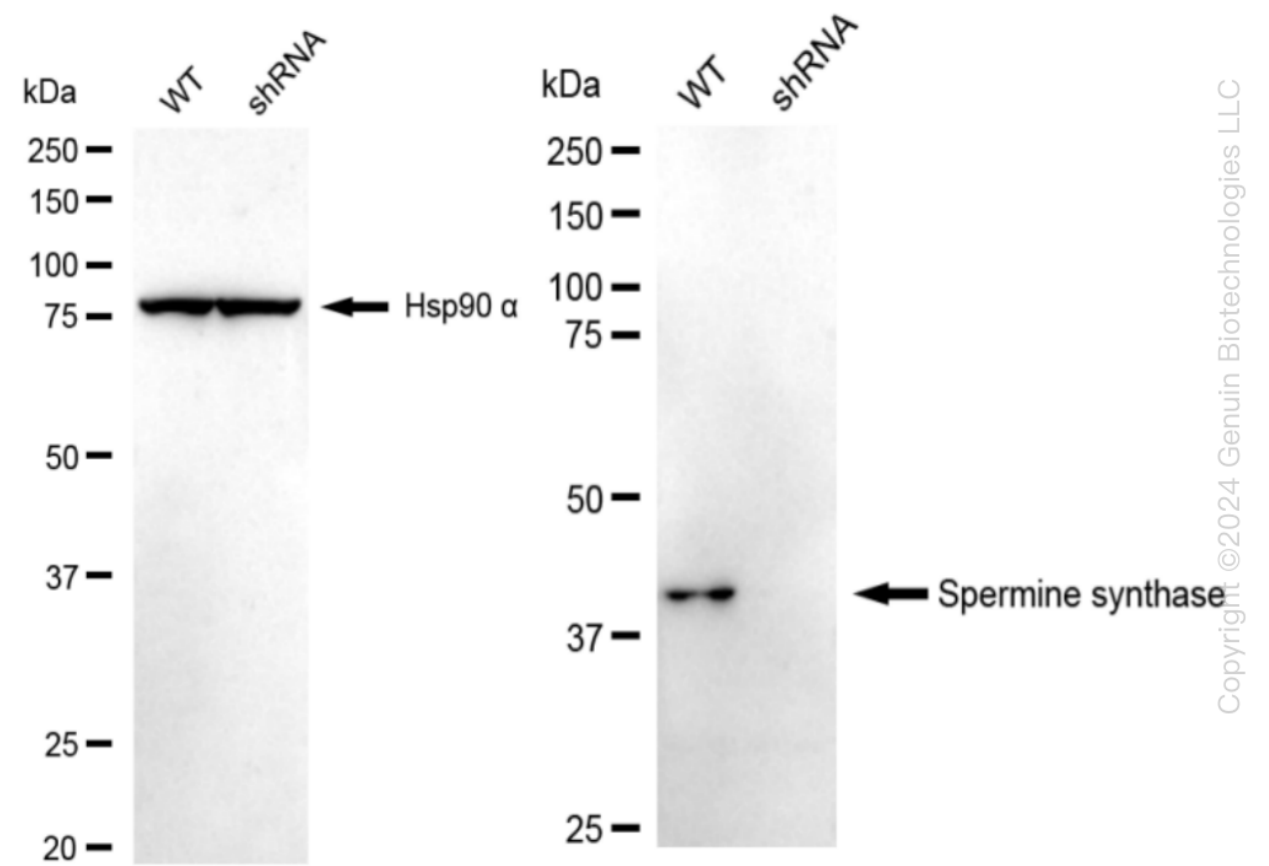
SALES@GENUINBIOTECH.COM  
FAX: +1-540-855-7041

[WWW.GENUINBIOTECH.COM](http://WWW.GENUINBIOTECH.COM)



| Genotype                      | Ct Value |
|-------------------------------|----------|
| Wild-Type                     | 18.14    |
| Knock-Down                    | 21.46    |
| $\Delta Ct (Ct_{KD}-Ct_{WT})$ | 3.32     |
| % mRNA Reduction              | ↓ 90%    |

RT-qPCR analysis. HeLa cells were infected with SMS-specific shRNA lentiviral particles, total RNA was extracted from wild-type and knockdown cells, RT-qPCR was performed using gene-specific primers.  $\Delta Ct (Ct_{KD}-Ct_{WT})$  was used to calculate mRNA reduction (%) between wild-type and knockdown cells using the following formula:  $(1-1/2^{\Delta Ct}) \times 100\%$ .



Western blotting analysis. SMS protein expression in wild-type (WT) and shRNA knockdown (KD) HeLa cells was detected using Western blotting. Hsp90  $\alpha$  served as a loading control. The blots were incubated with primary antibodies (Cat#61824, 1:5,000) against SMS and Hsp90  $\alpha$ , respectively, followed by incubating with HRP-conjugated goat anti-rabbit secondary antibody (Cat#201, 1:20,000). Images were developed using FeQ™ ECL Substrate Kit (Cat#226).