

Human TRIB3 Knockdown Cell Line (WB-Validated)



Catalog #: C61836

Aliases

TRIB3; Tribbles Pseudokinase 3; TRB3; P65-Interacting Inhibitor Of NF-Kappa-B; Tribbles Homolog 3; DJ1103G7.3; C20orf97; SKIP3; TRB-3; NIPK; SINK; Neuronal Cell Death Inducible Putative Kinase; Neuronal Cell Death-Inducible Putative Kinase; P65-Interacting Inhibitor Of NF-KappaB; Chromosome 20 Open Reading Frame 97; Tribbles Homolog 3 (Drosophila); C20ORF97

Background

Gene Name: TRIB3

NCBI Gene Entry: [57761](#)

Storage

Store at liquid nitrogen for 1 year.

Kit Components

1. Human TRIB3 Knockdown Cell Line (Wb-Validated)
2. Wild-type cell line

Parental Cell Line

Human cell line supplied by the client

Validation Methods

RT-qPCR, Western blotting (WB)

Shipping

Shipped on Dry Ice.

Instructions For Use

This knockdown cell line should be paired with wild-type cell line for use.

Note: This product is for research use only.

Validation Data

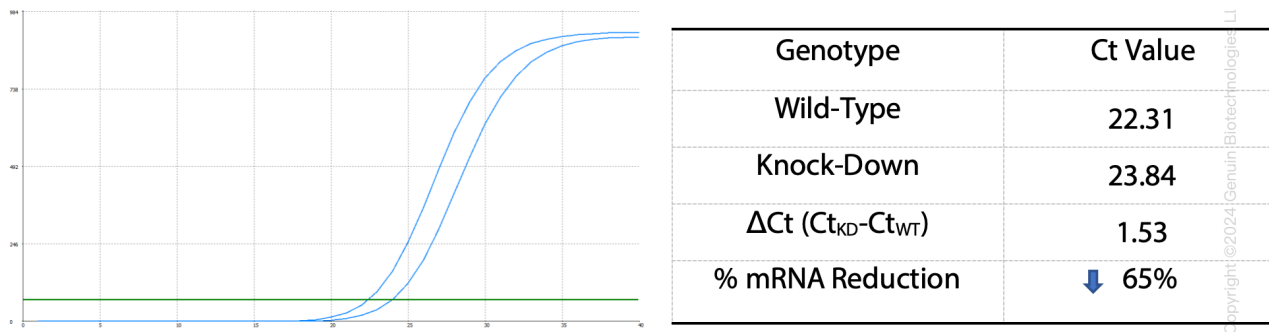
SUPPORT

SUPPORT@GENUINBIOTECH.COM
TEL: +1-540-855-7041

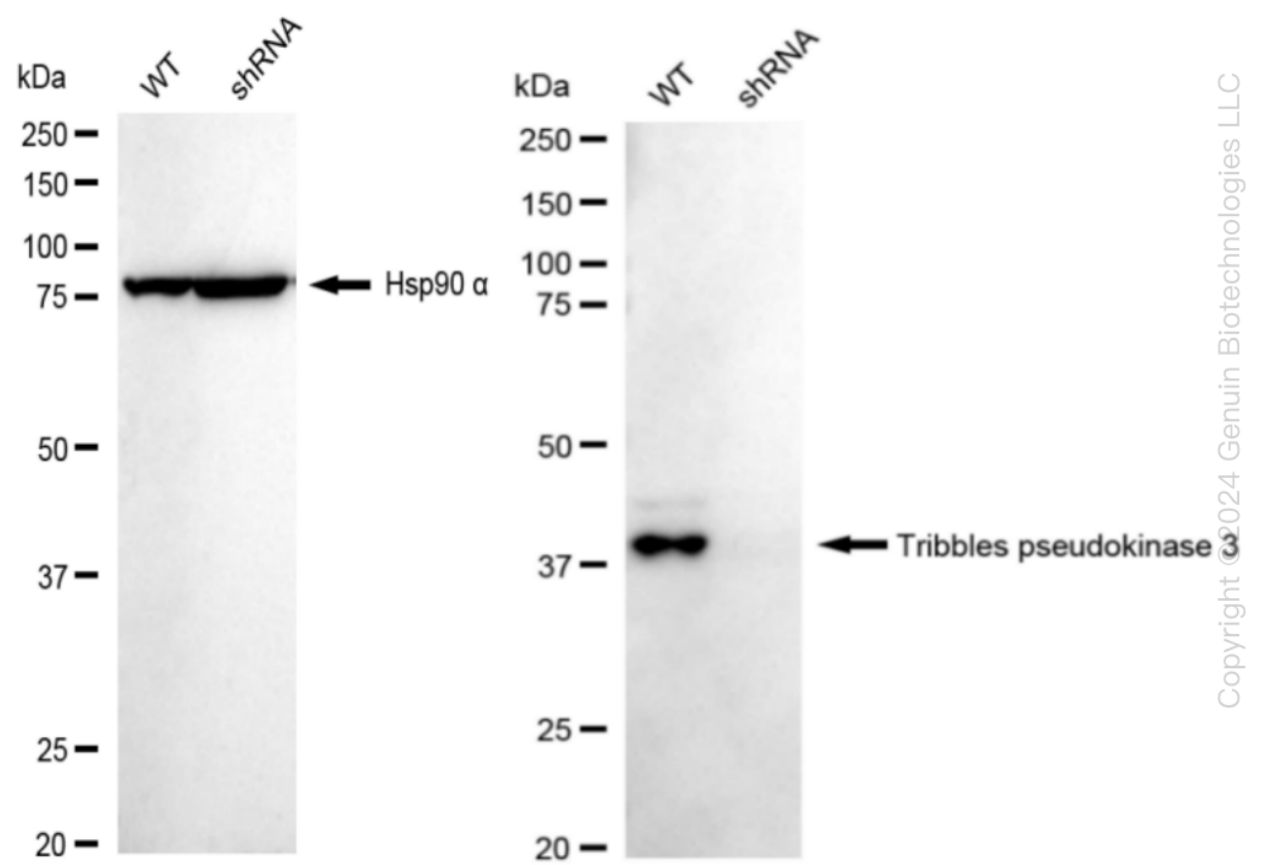
ORDERS

SALES@GENUINBIOTECH.COM
FAX: +1-540-855-7041

WWW.GENUINBIOTECH.COM



RT-qPCR analysis. HeLa cells were infected with TRIB3-specific shRNA lentiviral particles, total RNA was extracted from wild-type and knockdown cells, RT-qPCR was performed using gene-specific primers. ΔCt ($Ct_{KD} - Ct_{WT}$) was used to calculate mRNA reduction (%) between wild-type and knockdown cells using the following formula: $(1 - 1/2^{\Delta Ct}) \times 100\%$.



Western blotting analysis. TRIB3 protein expression in wild-type (WT) and shRNA knockdown (KD) HeLa cells was detected using Western blotting. Hsp90 α served as a loading control. The blots were incubated with primary antibodies (Cat#61836, 1:5,000) against TRIB3 and Hsp90 α , respectively, followed by incubating with HRP-conjugated goat anti-rabbit secondary antibody (Cat#201, 1:20,000). Images were developed using FeQ™ ECL Substrate Kit (Cat#226).