

Human TSFM Knockdown Cell Line (WB-Validated)



Catalog #: C61842

Aliases

TSFM; Ts Translation Elongation Factor, Mitochondrial; Elongation Factor Ts, Mitochondrial; EF-Tsmt; EF-TS; Mitochondrial Elongation Factor Ts; EF-TsMt; EFTSMT; EF-Ts; EFTS

Background

Gene Name: TSFM

NCBI Gene Entry: [10102](#)

Storage

Store at liquid nitrogen for 1 year.

Kit Components

1. Human TSFM Knockdown Cell Line (Wb-Validated)
2. Wild-type cell line

Parental Cell Line

Human cell line supplied by the client

Validation Methods

RT-qPCR, Western blotting (WB)

Shipping

Shipped on Dry Ice.

Instructions For Use

This knockdown cell line should be paired with wild-type cell line for use.

Note: This product is for research use only.

Validation Data

SUPPORT

SUPPORT@GENUINBIOTECH.COM
TEL: +1-540-855-7041

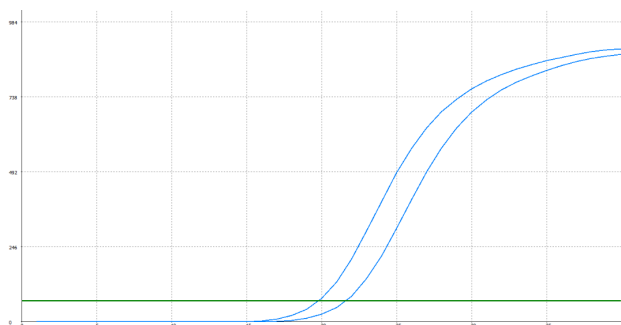
ORDERS

SALES@GENUINBIOTECH.COM
FAX: +1-540-855-7041

WWW.GENUINBIOTECH.COM

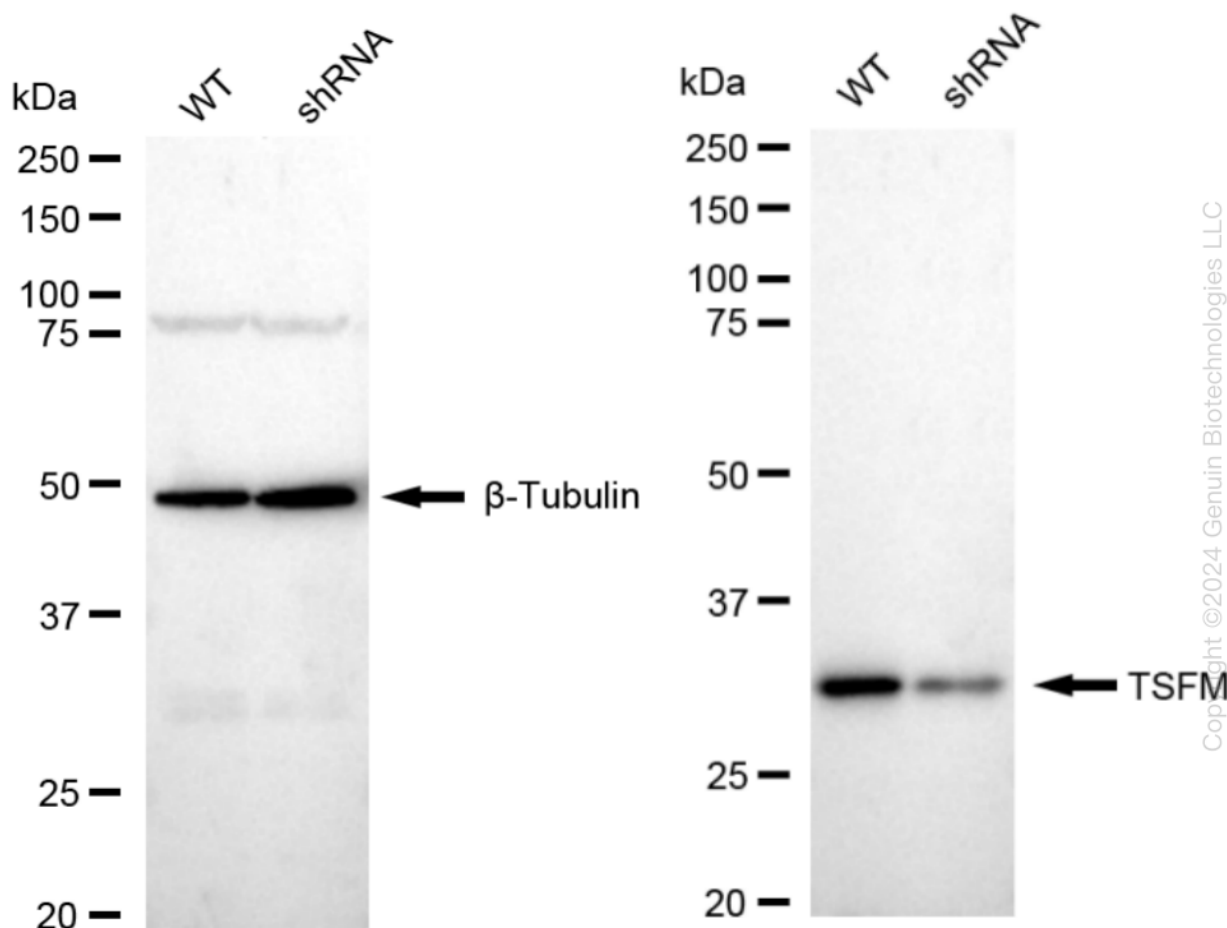
Human TSFM Knockdown Cell Line (WB-Validated)

PAGE 2



Genotype	Ct Value
Wild-Type	19.63
Knock-Down	21.40
$\Delta Ct (Ct_{KD} - Ct_{WT})$	1.77
% mRNA Reduction	↓ 71%

RT-qPCR analysis. HeLa cells were infected with TSFM-specific shRNA lentiviral particles, total RNA was extracted from wild-type and knockdown cells, RT-qPCR was performed using gene-specific primers. $\Delta Ct (Ct_{KD} - Ct_{WT})$ was used to calculate mRNA reduction (%) between wild-type and knockdown cells using the following formula: $(1 - 1/2^{\Delta Ct}) \times 100\%$.



Western blotting analysis. TSFM protein expression in wild-type (WT) and shRNA knockdown (KD) HeLa cells was detected using Western blotting. β -Tubulin served as a loading control. The blots were incubated with primary antibodies against TSFM and β -Tubulin, respectively, followed by incubating with HRP-conjugated goat anti-rabbit secondary antibody. Images were developed using FeQ™ ECL Substrate Kit.

SUPPORT

SUPPORT@GENUINBIOTECH.COM
TEL: +1-540-855-7041

ORDERS

SALES@GENUINBIOTECH.COM
FAX: +1-540-855-7041

WWW.GENUINBIOTECH.COM