

# Human RUNX1 Knockdown Cell Line (WB-Validated)



**Catalog #: C61851**

## Aliases

RUNX1; RUNX Family Transcription Factor 1; Runt-Related Transcription Factor 1; AMLCR1; CBFA2; AML1; Polyomavirus Enhancer-Binding Protein 2 Alpha B Subunit; SL3/AKV Core-Binding Factor Alpha B Subunit; SL3-3 Enhancer Factor 1 Alpha B Subunit; Runt Related Transcription Factor 1; Acute Myeloid Leukemia 1 Protein; Oncogene AML-1; PEBP2-Alpha B; PEA2-Alpha B; PEBP2A2; Core-Binding Factor, Runt Domain, Alpha Subunit 2; Core-Binding Factor Subunit Alpha-2; AML1-EVI-1 Fusion Protein; Acute Myeloid Leukemia 1; AML1-ETO Fusion Protein; AML1-ETO Fusion; Aml1 Oncogene; Mutant RUNX1; CBF-Alpha-2; AML1-EVI-1; PEBP2alpha; CBF2alpha; PEBP2aB; EVI-1

## Background

Gene Name: RUNX1  
NCBI Gene Entry: [861](#)

## Storage

Store at liquid nitrogen for 1 year.

## Kit Components

1. Human RUNX1 Knockdown Cell Line (Wb-Validated)
2. Wild-type cell line

## Parental Cell Line

Human cell line supplied by the client

## Validation Methods

RT-qPCR, Western blotting (WB)

## Shipping

Shipped on Dry Ice.

## Instructions For Use

This knockdown cell line should be paired with wild-type cell line for use.

**Note:** This product is for research use only.

## Validation Data

---

### SUPPORT

SUPPORT@GENUINBIOTECH.COM  
TEL: +1-540-855-7041

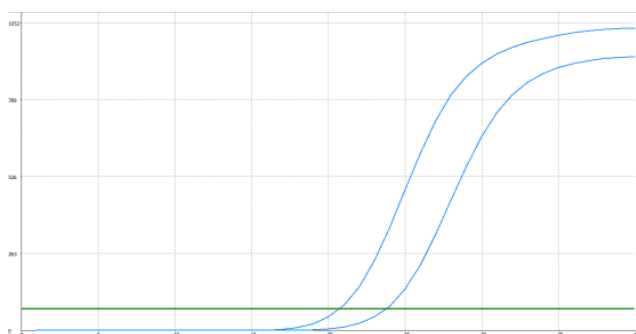
### ORDERS

SALES@GENUINBIOTECH.COM  
FAX: +1-540-855-7041

[WWW.GENUINBIOTECH.COM](http://WWW.GENUINBIOTECH.COM)

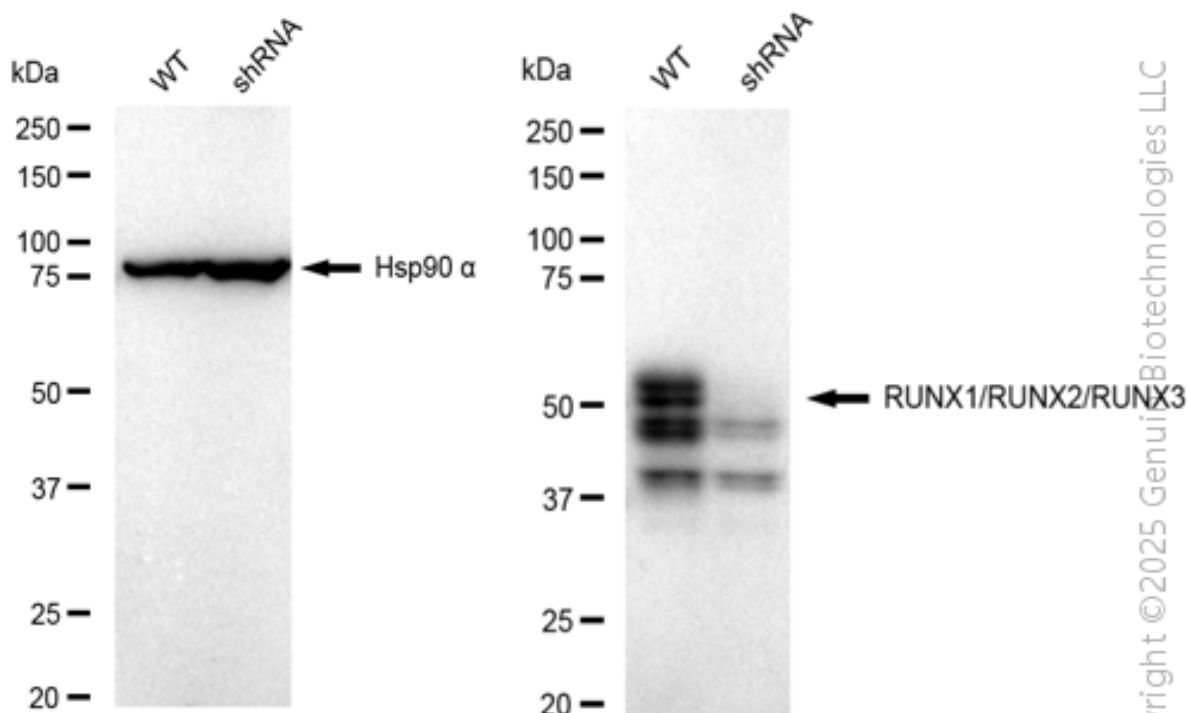
## Human RUNX1 Knockdown Cell Line (WB-Validated)

PAGE 2



Genotype	Ct Value
Wild-Type	20.72
Knock-Down	23.56
$\Delta Ct$ (CtKD-CtWT)	2.84
% mRNA Reduction	86%

RT-qPCR analysis. HeLa cells were infected with RUNX1-specific shRNA lentiviral particles, total RNA was extracted from wild-type and knockdown cells, RT-qPCR was performed using gene-specific primers.  $\Delta Ct$  (CtKD-CtWT) was used to calculate mRNA reduction (%) between wild-type and knockdown cells using the following formula:  $(1 - 1/2^{\Delta Ct}) \times 100\%$ .



Western blotting analysis. RUNX1 protein expression in wild-type (WT) and shRNA knockdown (KD) HeLa cells was detected using Western blotting. Hsp90  $\alpha$  served as a loading control. The blots were incubated with primary antibodies against RUNX1 and Hsp90  $\alpha$ , respectively, followed by incubating with HRP-conjugated goat anti-rabbit secondary antibody. Images were developed

### SUPPORT

SUPPORT@GENUINBIOTECH.COM  
TEL: +1-540-855-7041

### ORDERS

SALES@GENUINBIOTECH.COM  
FAX: +1-540-855-7041

[WWW.GENUINBIOTECH.COM](http://WWW.GENUINBIOTECH.COM)

## **Human RUNX1 Knockdown Cell Line (WB-Validated)**

PAGE 3

using FeQ™ ECL Substrate Kit.

---

### **SUPPORT**

SUPPORT@GENUINBIOTECH.COM  
TEL: +1-540-855-7041

### **ORDERS**

SALES@GENUINBIOTECH.COM  
FAX: +1-540-855-7041

**WWW.GENUINBIOTECH.COM**