

Human PBK Knockdown Cell Line (WB-Validated)



Catalog #: C61861

Aliases

PBK; PDZ Binding Kinase; TOPK; CT84; SPK; T-LAK Cell-Originated Protein Kinase; Cancer/ Testis Antigen 84; Nori-3; Lymphokine-Activated Killer T-Cell-Originated Protein Kinase; Spermatogenesis-Related Protein Kinase; MAPKK-Like Protein Kinase; FLJ14385; Serine/ Threonine Protein Kinase; Epididymis Luminal Protein 164; PDZ-Binding Kinase; EC 2.7.12.2; HEL164; NORI-3

Background

Gene Name: PBK

NCBI Gene Entry: [55872](#)

Storage

Store at liquid nitrogen for 1 year.

Kit Components

1. Human PBK Knockdown Cell Line (Wb-Validated)
2. Wild-type cell line

Parental Cell Line

Human cell line supplied by the client

Validation Methods

RT-qPCR, Western blotting (WB)

Shipping

Shipped on Dry Ice.

Instructions For Use

This knockdown cell line should be paired with wild-type cell line for use.

Note: This product is for research use only.

Validation Data

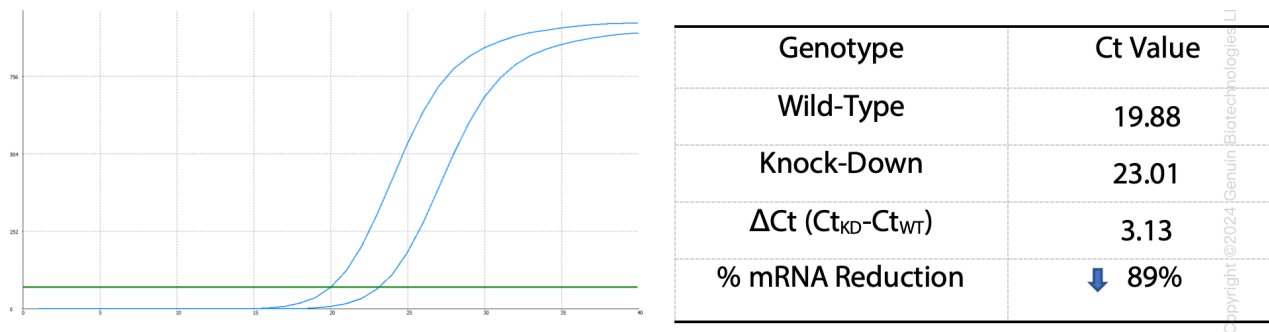
SUPPORT

SUPPORT@GENUINBIOTECH.COM
TEL: +1-540-855-7041

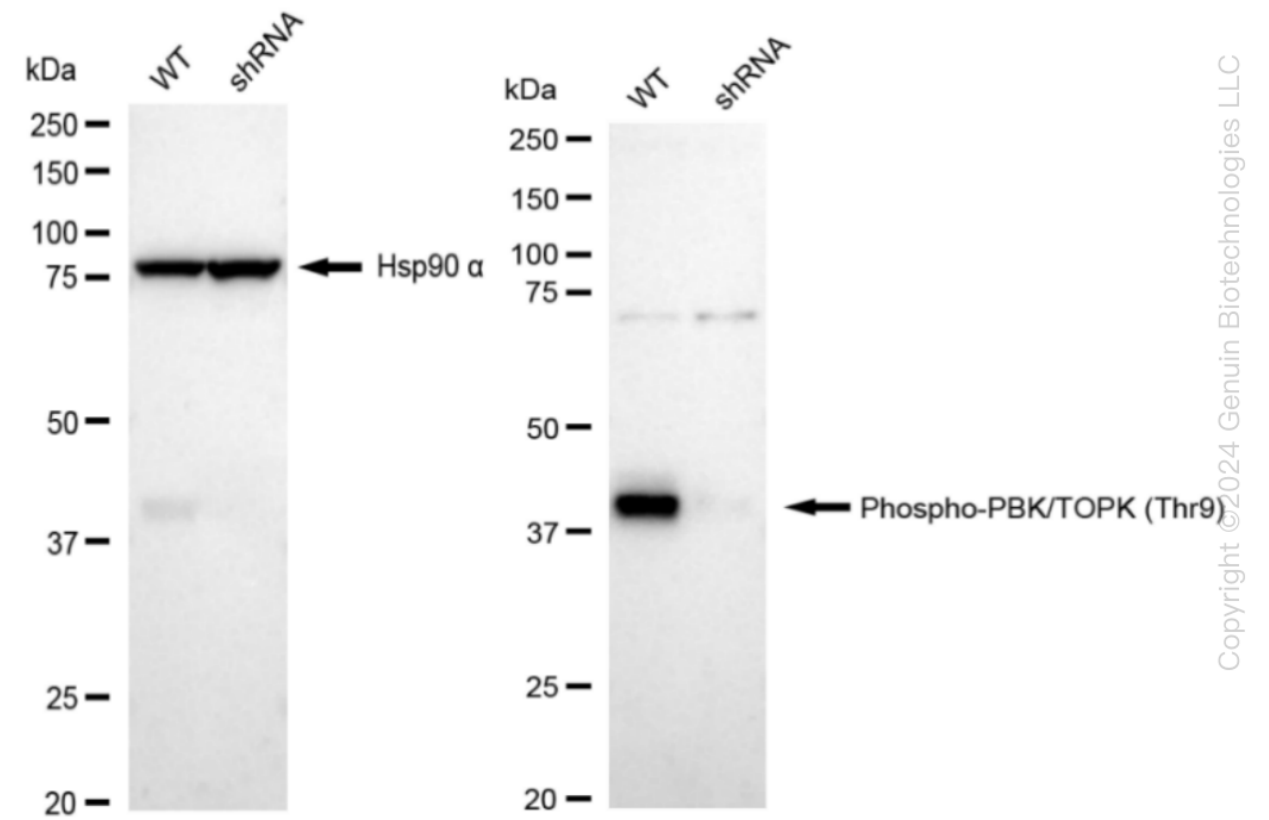
ORDERS

SALES@GENUINBIOTECH.COM
FAX: +1-540-855-7041

WWW.GENUINBIOTECH.COM



RT-qPCR analysis. HeLa cells were infected with PBK-specific shRNA lentiviral particles, total RNA was extracted from wild-type and knockdown cells, RT-qPCR was performed using gene-specific primers. $\Delta Ct (Ct_{KD} - Ct_{WT})$ was used to calculate mRNA reduction (%) between wild-type and knockdown cells using the following formula: $(1 - 1/2^{\Delta Ct}) \times 100\%$.



Western blotting analysis. PBK protein expression in wild-type (WT) and shRNA knockdown (KD) HeLa cells was detected using Western blotting. Hsp90 α served as a loading control. The blots were incubated with primary antibodies (Cat#61861, 1:5,000) against PBK and Hsp90 α, respectively, followed by incubating with HRP-conjugated goat anti-rabbit secondary antibody (Cat#201, 1:20,000). Images were developed using FeQ™ ECL Substrate Kit (Cat#226).