

# Human PFKFB3 Knockdown Cell Line (WB-Validated)



**Catalog #: C61862**

## Aliases

PFKFB3; 6-Phosphofructo-2-Kinase/Fructose-2,6-Bisphosphatase 3; 6-Phosphofructo-2-Kinase/Fructose-2,6-Bisphosphatase 3; 6PF-2-K/Fru-2,6-P2ase Brain/Placenta-Type Isozyme 3; Renal Carcinoma Antigen NY-REN-56; 6PF-2-K/Fru-2,6-P2ase 3; PFK/FBPase 3; IPFK-2; Inducible 6-Phosphofructo-2-Kinase/Fructose-2,6-Bisphosphatase; Fructose-6-Phosphate,2-Kinase/Fructose-2,6-Bisphosphatase; 6-Phosphofructo-2-Kinase/ Fructose-2,6-Bisphosphatase; IPFK2; PFK2

## Background

Gene Name: PFKFB3  
NCBI Gene Entry: [5209](#)

## Storage

Store at liquid nitrogen for 1 year.

## Kit Components

1. Human PFKFB3 Knockdown Cell Line (Wb-Validated)
2. Wild-type cell line

## Parental Cell Line

Human cell line supplied by the client

## Validation Methods

RT-qPCR, Western blotting (WB)

## Shipping

Shipped on Dry Ice.

## Instructions For Use

This knockdown cell line should be paired with wild-type cell line for use.

**Note:** This product is for research use only.

## Validation Data

---

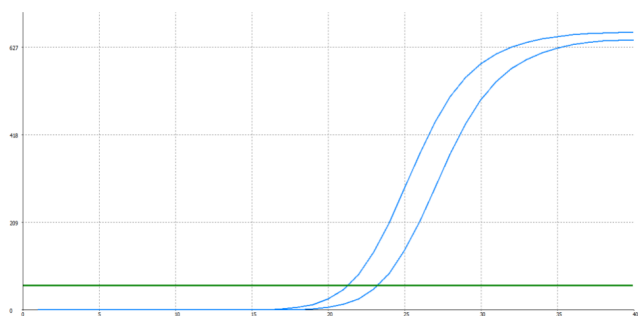
### SUPPORT

SUPPORT@GENUINBIOTECH.COM  
TEL: +1-540-855-7041

### ORDERS

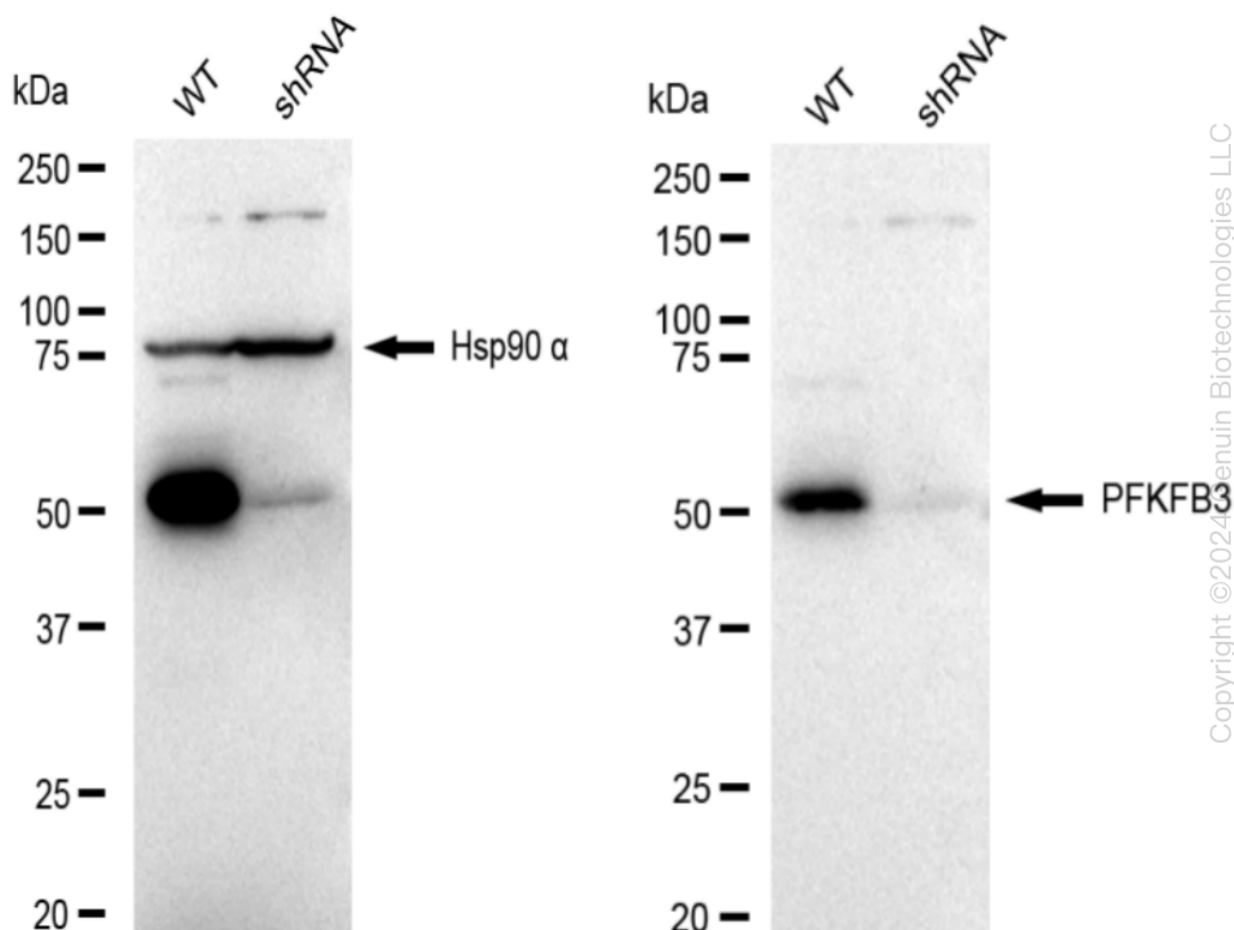
SALES@GENUINBIOTECH.COM  
FAX: +1-540-855-7041

[WWW.GENUINBIOTECH.COM](http://WWW.GENUINBIOTECH.COM)



Genotype	Ct Value
Wild-Type	20.94
Knock-Down	22.81
$\Delta Ct$ ( $Ct_{KD} - Ct_{WT}$ )	1.87
% mRNA Reduction	↓ 73%

RT-qPCR analysis. HT-1080 cells were infected with PFKFB3-specific shRNA lentiviral particles, total RNA was extracted from wild-type and knockdown cells, RT-qPCR was performed using gene-specific primers.  $\Delta Ct$  ( $Ct_{KD} - Ct_{WT}$ ) was used to calculate mRNA reduction (%) between wild-type and knockdown cells using the following formula:  $(1 - 1/2^{\Delta Ct}) \times 100\%$ .



Western blotting analysis. PFKFB3 protein expression in wild-type (WT) and shRNA knockdown (KD) HT-1080 cells was detected using Western blotting. Hsp90  $\alpha$  served as a loading control. The blots were incubated with primary antibodies (Cat#61862, 1:5,000) against PFKFB3 and Hsp90  $\alpha$ , respectively, followed by incubating with HRP-conjugated goat anti-rabbit secondary antibody

## **Human PFKFB3 Knockdown Cell Line (WB-Validated)**

PAGE 3

(Cat#201, 1:20,000). Images were developed using FeQ™ ECL Substrate Kit (Cat#226).

---

### **SUPPORT**

SUPPORT@GENUINBIOTECH.COM  
TEL: +1-540-855-7041

### **ORDERS**

SALES@GENUINBIOTECH.COM  
FAX: +1-540-855-7041

**WWW.GENUINBIOTECH.COM**