

# Human BACE1 Knockdown Cell Line (WB-Validated)



**Catalog #: C61888**

## Aliases

BACE1; Beta-Secretase 1; BACE; Membrane-Associated Aspartic Protease; Beta-Site APP Cleaving Enzyme 1; Beta-Site APP-Cleaving Enzyme  
Aspartyl Protease; EC 3.4.23.46; Memapsin-2; Asp 2; ASP2; Beta-Site Amyloid Beta A4 Precursor Protein-Cleaving Enzyme; Beta-Site Amyloid Precursor Protein Cleaving Enzyme 1; Transmembrane Aspartic Proteinase Asp2; Beta-Site APP-Cleaving Enzyme 1; APP Beta-Secretase; EC 3.4.23; KIAA1149; HSPC104

## Background

Gene Name: BACE1

NCBI Gene Entry: [23621](#)

## Storage

Store at liquid nitrogen for 1 year.

## Kit Components

1. Human BACE1 Knockdown Cell Line (Wb-Validated)
2. Wild-type cell line

## Parental Cell Line

Human cell line supplied by the client

## Validation Methods

RT-qPCR, Western blotting (WB)

## Shipping

Shipped on Dry Ice.

## Instructions For Use

This knockdown cell line should be paired with wild-type cell line for use.

**Note:** This product is for research use only.

## Validation Data

---

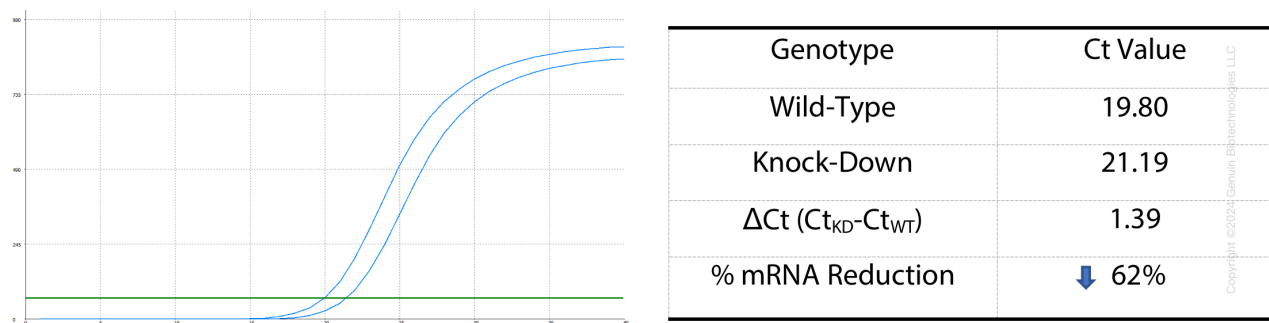
### SUPPORT

SUPPORT@GENUINBIOTECH.COM  
TEL: +1-540-855-7041

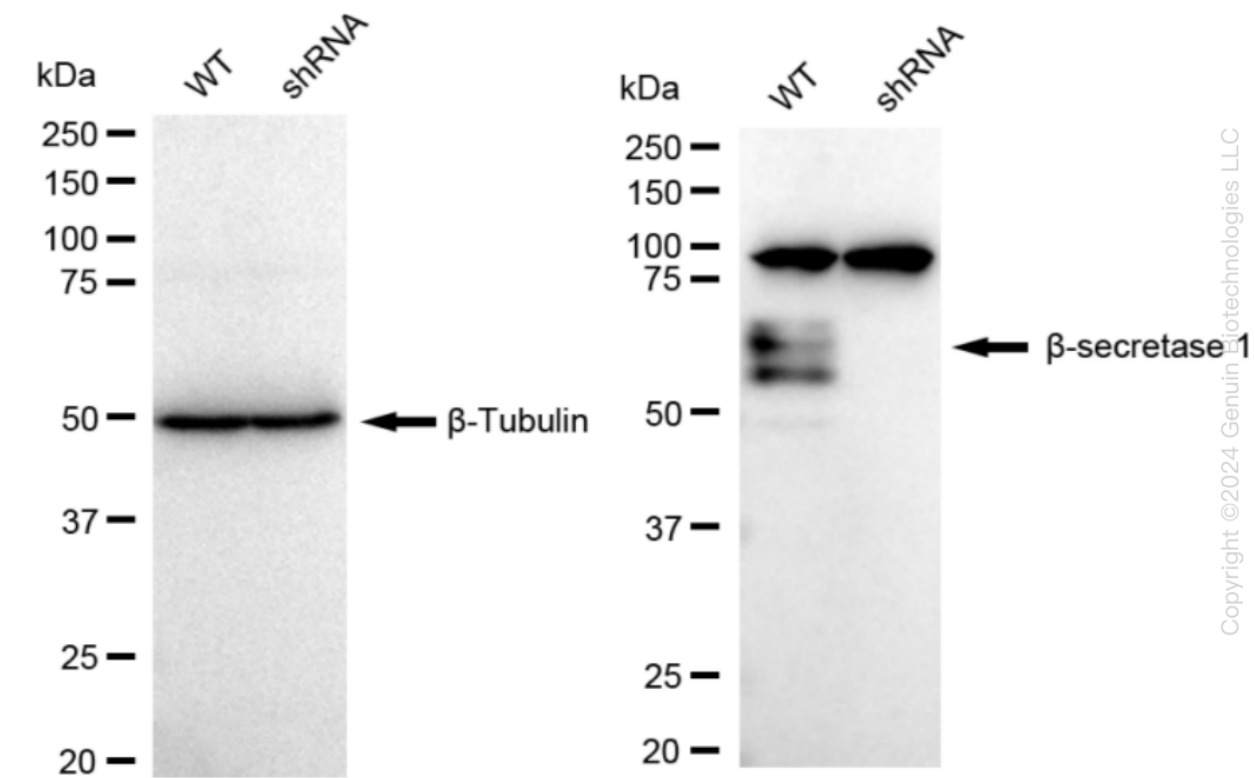
### ORDERS

SALES@GENUINBIOTECH.COM  
FAX: +1-540-855-7041

[WWW.GENUINBIOTECH.COM](http://WWW.GENUINBIOTECH.COM)



RT-qPCR analysis. HT-1080 cells were infected with BACE1-specific shRNA lentiviral particles, total RNA was extracted from wild-type and knockdown cells, RT-qPCR was performed using gene-specific primers.  $\Delta Ct (Ct_{KD}-Ct_{WT})$  was used to calculate mRNA reduction (%) between wild-type and knockdown cells using the following formula:  $(1-1/2^{\Delta Ct}) \times 100\%$ .



Western blotting analysis. BACE1 protein expression in wild-type (WT) and shRNA knockdown (KD) HT-1080 cells was detected using Western blotting.  $\beta$ -Tubulin served as a loading control. The blots were incubated with primary antibodies against BACE1 and  $\beta$ -Tubulin, respectively, followed by incubating with HRP-conjugated goat anti-rabbit secondary antibody. Images were developed using FeQ™ ECL Substrate Kit.