

Human CSF1 Knockdown Cell Line (WB-Validated)



Catalog #: C61916

Aliases

CSF1; Colony Stimulating Factor 1; MCSF; M-CSF; Proteoglycan Macrophage Colony-Stimulating Factor; Colony Stimulating Factor 1 (Macrophage); Macrophage Colony Stimulating Factor 1; Macrophage Colony-Stimulating Factor 1; Lanimostim; MGC31930; PG-M-CSF; CSF-1; CSF1-HERV-LTR71B Fusion Protein

Background

Gene Name: CSF1

NCBI Gene Entry: [1435](#)

Storage

Store at liquid nitrogen for 1 year.

Kit Components

1. Human CSF1 Knockdown Cell Line (Wb-Validated)
2. Wild-type cell line

Parental Cell Line

Human cell line supplied by the client

Validation Methods

RT-qPCR, Western blotting (WB)

Shipping

Shipped on Dry Ice.

Instructions For Use

This knockdown cell line should be paired with wild-type cell line for use.

Note: This product is for research use only.

Validation Data

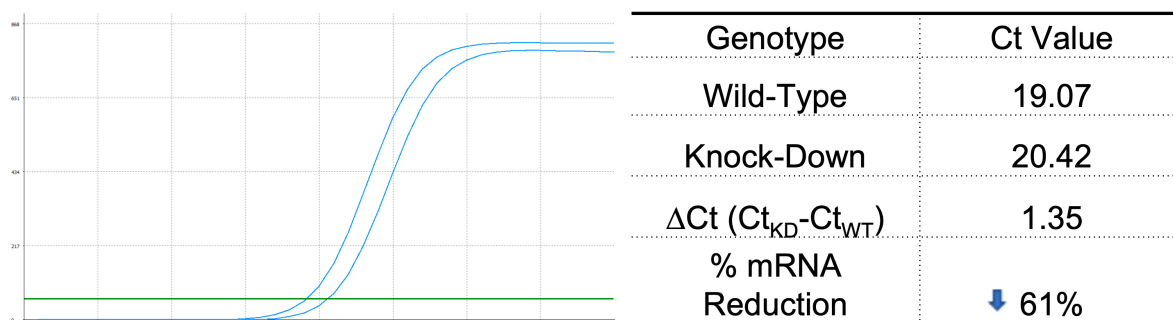
SUPPORT

SUPPORT@GENUINBIOTECH.COM
TEL: +1-540-855-7041

ORDERS

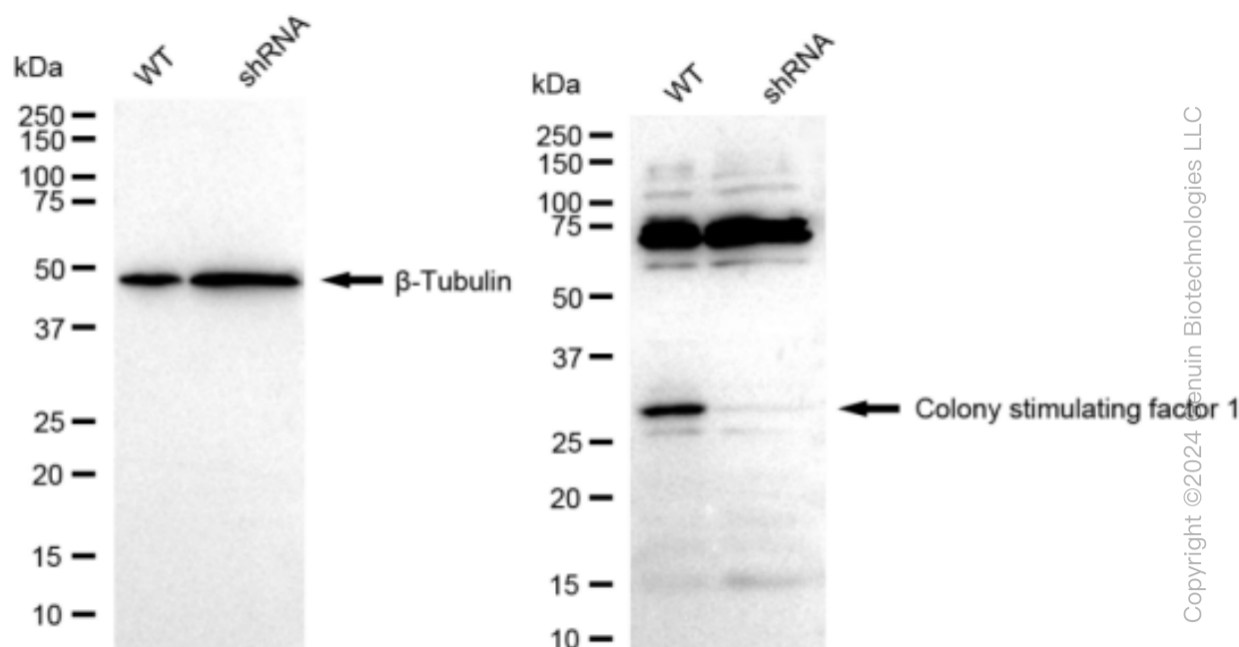
SALES@GENUINBIOTECH.COM
FAX: +1-540-855-7041

WWW.GENUINBIOTECH.COM



Copyright ©2025 Genuin Biotechnologies LLC

RT-qPCR analysis. HT-1080 cells were infected with CSF1-specific shRNA lentiviral particles, total RNA was extracted from wild-type and knockdown cells, RT-qPCR was performed using gene-specific primers. $\Delta Ct (Ct_{KD} - Ct_{WT})$ was used to calculate mRNA reduction (%) between wild-type and knockdown cells using the following formula: $(1 - 1/2^{\Delta Ct}) \times 100\%$.



Copyright ©2024 Genuin Biotechnologies LLC

Western blotting analysis. CSF1 protein expression in wild-type (WT) and shRNA knockdown (KD) HT-1080 cells was detected using Western blotting. β-Tubulin served as a loading control. The blots were incubated with primary antibodies against CSF1 and β-Tubulin, respectively, followed by incubating with HRP-conjugated goat anti-rabbit secondary antibody. Images were developed using FeQ™ ECL Substrate Kit.