

Human EIF2AK4 Knockdown Cell Line (WB-Validated)



Catalog #: C61956

Aliases

EIF2AK4; Eukaryotic Translation Initiation Factor 2 Alpha Kinase 4; GCN2; KIAA1338; EIF-2-Alpha Kinase GCN2; GCN2-Like Protein; Eukaryotic Translation Initiation Factor 2-Alpha Kinase 4; General Control Nonderepressible; GCN2 EIF2alpha Kinase; EIF-2-Alpha Kinase; EC 2.7.11.1; PVOD2

Background

Gene Name: EIF2AK4

NCBI Gene Entry: [440275](#)

Storage

Store at liquid nitrogen for 1 year.

Kit Components

1. Human EIF2AK4 Knockdown Cell Line (Wb-Validated)
2. Wild-type cell line

Parental Cell Line

Human cell line supplied by the client

Validation Methods

RT-qPCR, Western blotting (WB)

Shipping

Shipped on Dry Ice.

Instructions For Use

This knockdown cell line should be paired with wild-type cell line for use.

Note: This product is for research use only.

Validation Data

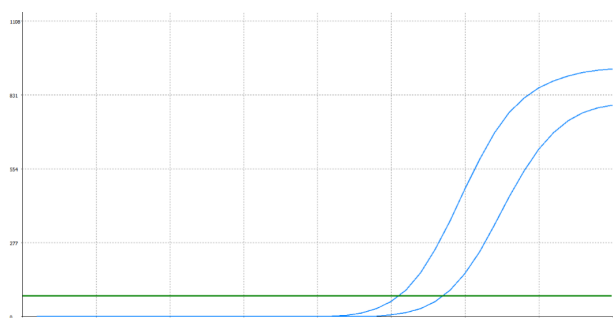
SUPPORT

SUPPORT@GENUINBIOTECH.COM
TEL: +1-540-855-7041

ORDERS

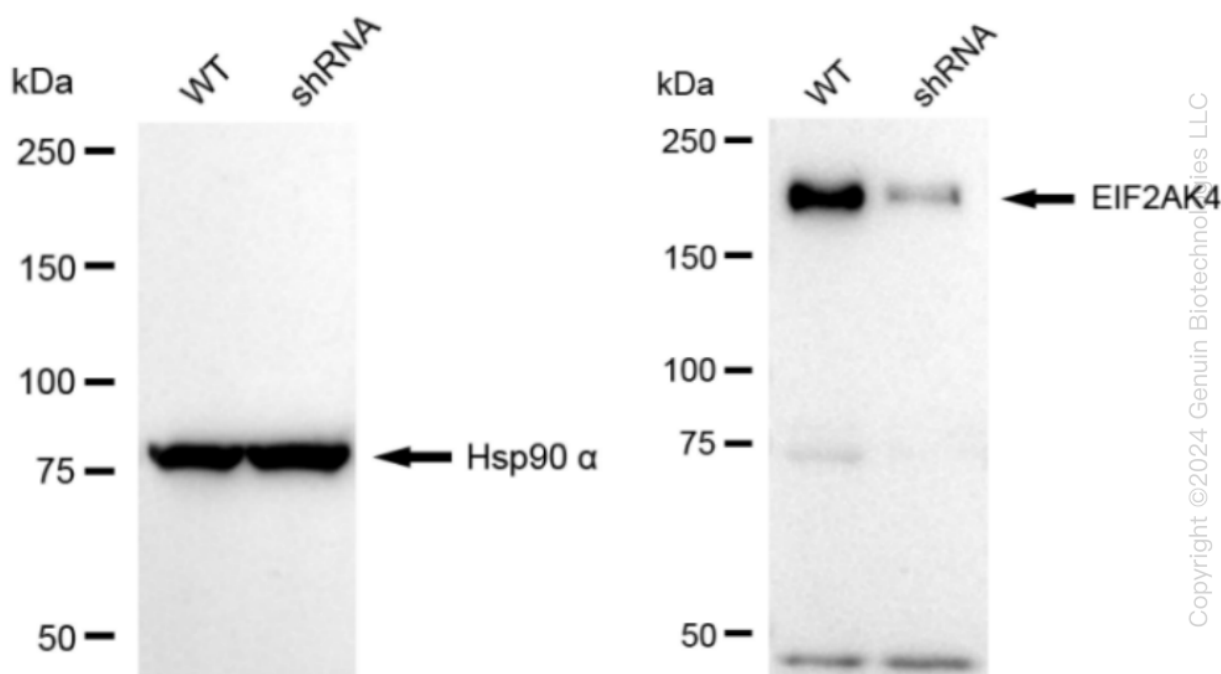
SALES@GENUINBIOTECH.COM
FAX: +1-540-855-7041

WWW.GENUINBIOTECH.COM



| Genotype | Ct Value |
|-------------------------------------|----------|
| Wild-Type | 25.21 |
| Knock-Down | 27.96 |
| ΔCt ($Ct_{KD} - Ct_{WT}$) | 2.75 |
| % mRNA Reduction | ↓ 85% |

RT-qPCR analysis. HeLa cells were infected with EIF2AK4-specific shRNA lentiviral particles, total RNA was extracted from wild-type and knockdown cells, RT-qPCR was performed using gene-specific primers. ΔCt ($Ct_{KD} - Ct_{WT}$) was used to calculate mRNA reduction (%) between wild-type and knockdown cells using the following formula: $(1 - 1/2^{\Delta Ct}) \times 100\%$.



Western blotting analysis. EIF2AK4 protein expression in wild-type (WT) and shRNA knockdown (KD) HeLa cells was detected using Western blotting. Hsp90 α served as a loading control. The blots were incubated with primary antibodies against EIF2AK4 and Hsp90 α , respectively, followed by incubating with HRP-conjugated goat anti-rabbit secondary antibody. Images were developed using FeQ™ ECL Substrate Kit.