

# Human ENPEP Knockdown Cell Line (WB-Validated)



**Catalog #: C61963**

## Aliases

ENPEP; Glutamyl Aminopeptidase; CD249; Differentiation Antigen Gp160; Aminopeptidase A; EC 3.4.11.7; Gp160; AP-A; EAP; Glutamyl Aminopeptidase (Aminopeptidase A); CD249 Antigen; EC 3.4.11; GP160; APA

## Background

Gene Name: ENPEP  
NCBI Gene Entry: [2028](#)

## Storage

Store at liquid nitrogen for 1 year.

## Kit Components

1. Human ENPEP Knockdown Cell Line (Wb-Validated)
2. Wild-type cell line

## Parental Cell Line

Human cell line supplied by the client

## Validation Methods

RT-qPCR, Western blotting (WB)

## Shipping

Shipped on Dry Ice.

## Instructions For Use

This knockdown cell line should be paired with wild-type cell line for use.

**Note:** This product is for research use only.

## Validation Data

---

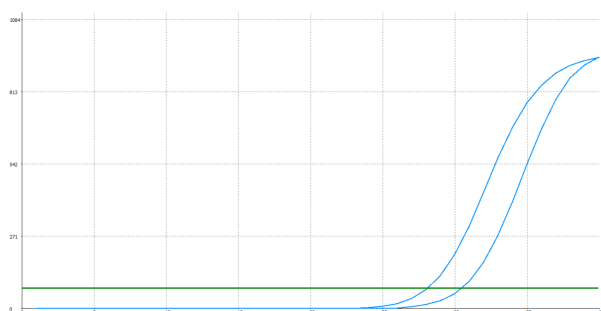
### SUPPORT

SUPPORT@GENUINBIOTECH.COM  
TEL: +1-540-855-7041

### ORDERS

SALES@GENUINBIOTECH.COM  
FAX: +1-540-855-7041

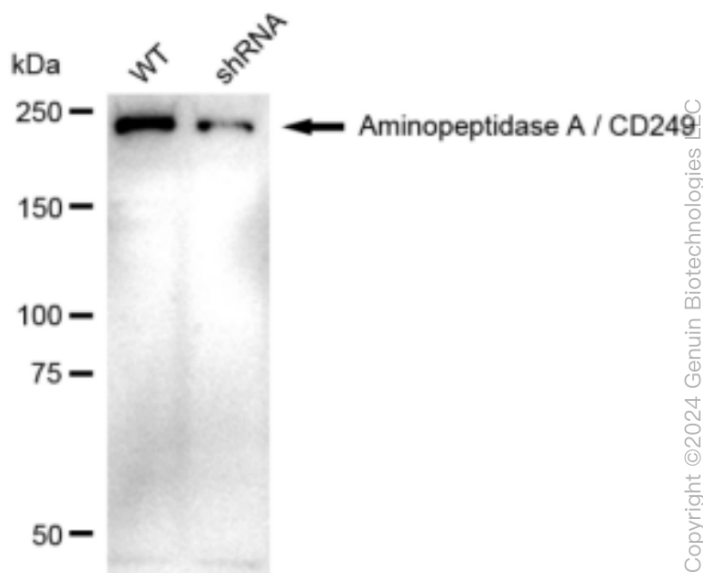
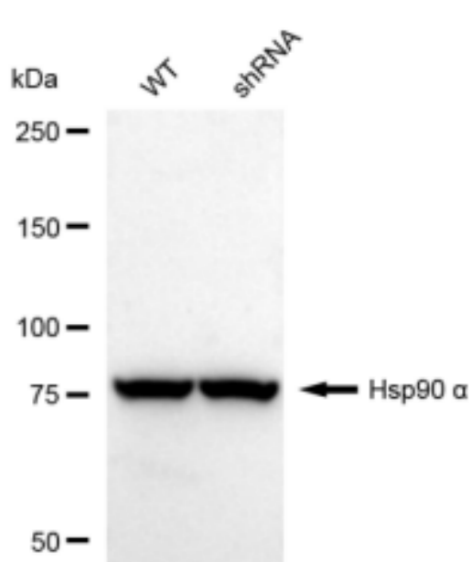
[WWW.GENUINBIOTECH.COM](http://WWW.GENUINBIOTECH.COM)



Genotype	Ct Value
Wild-Type	27.90
Knock-Down	30.24
$\Delta Ct (Ct_{KD} - Ct_{WT})$	2.34
% mRNA Reduction	↓ 80%

Copyright ©2025 Genuin Biotechnologies LLC

RT-qPCR analysis. HeLa cells were infected with ENPEP-specific shRNA lentiviral particles, total RNA was extracted from wild-type and knockdown cells, RT-qPCR was performed using gene-specific primers.  $\Delta Ct (Ct_{KD} - Ct_{WT})$  was used to calculate mRNA reduction (%) between wild-type and knockdown cells using the following formula:  $(1 - 1/2^{\Delta Ct}) \times 100\%$ .



Copyright ©2024 Genuin Biotechnologies LLC

Western blotting analysis. ENPEP protein expression in wild-type (WT) and shRNA knockdown (KD) HeLa cells was detected using Western blotting. Hsp90  $\alpha$  served as a loading control. The blots were incubated with primary antibodies against ENPEP and Hsp90  $\alpha$ , respectively, followed by incubating with HRP-conjugated goat anti-rabbit secondary antibody. Images were developed using FeQ™ ECL Substrate Kit.