

Human EPHB1 Knockdown Cell Line (WB-Validated)



Catalog #: C61965

Aliases

EPHB1; EPH Receptor B1; EPHT2; HEK6; Neuronally-Expressed EPH-Related Tyrosine Kinase; Tyrosine-Protein Kinase Receptor EPH-2; Ephrin Type-B Receptor 1; EPH-Like Kinase 6; EC 2.7.10.1; Hek6; ELK; NET; EK6; Eph Tyrosine Kinase 2; EPH Tyrosine Kinase 2; EC 2.7.10; EphB1

Background

Gene Name: EPHB1

NCBI Gene Entry: [2047](#)

Storage

Store at liquid nitrogen for 1 year.

Kit Components

1. Human EPHB1 Knockdown Cell Line (Wb-Validated)
2. Wild-type cell line

Parental Cell Line

Human cell line supplied by the client

Validation Methods

RT-qPCR, Western blotting (WB)

Shipping

Shipped on Dry Ice.

Instructions For Use

This knockdown cell line should be paired with wild-type cell line for use.

Note: This product is for research use only.

Validation Data

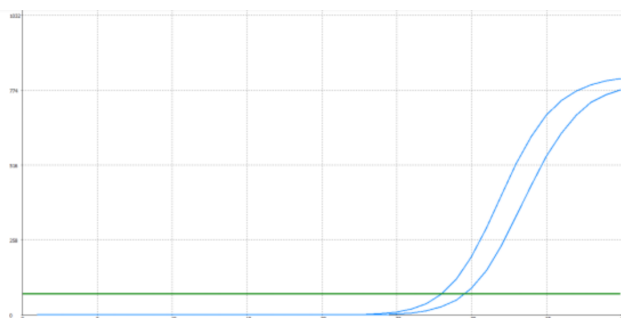
SUPPORT

SUPPORT@GENUINBIOTECH.COM
TEL: +1-540-855-7041

ORDERS

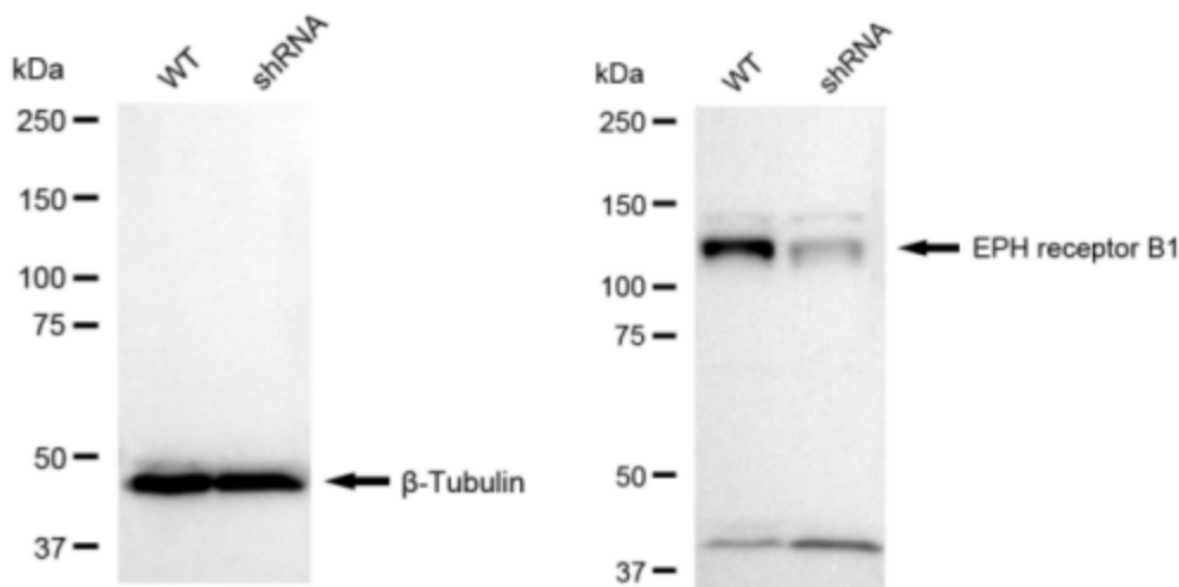
SALES@GENUINBIOTECH.COM
FAX: +1-540-855-7041

WWW.GENUINBIOTECH.COM



Genotype	Ct Value
Wild-Type	27.59
Knock-Down	29.08
$\Delta Ct (Ct_{KD} - Ct_{WT})$	1.49
% mRNA Reduction	↓ 64%

RT-qPCR analysis. HeLa cells were infected with EPHB1-specific shRNA lentiviral particles, total RNA was extracted from wild-type and knockdown cells, RT-qPCR was performed using gene-specific primers. $\Delta Ct (Ct_{KD} - Ct_{WT})$ was used to calculate mRNA reduction (%) between wild-type and knockdown cells using the following formula: $(1 - 1/2^{\Delta Ct}) \times 100\%$.



Western blotting analysis. EPHB1 protein expression in wild-type (WT) and shRNA knockdown (KD) HeLa cells was detected using Western blotting. β -Tubulin served as a loading control. The blots were incubated with primary antibodies (Cat#61965, 1:5,000) against EPHB1 and β -Tubulin, respectively, followed by incubating with HRP-conjugated goat anti-rabbit secondary antibody (Cat#201, 1:20,000). Images were developed using FeQ™ ECL Substrate Kit (Cat#226).