

# Human GOLIM4 Knockdown Cell Line (WB-Validated)



**Catalog #: C62015**

## Aliases

GOLIM4; Golgi Integral Membrane Protein 4; GPP130; GIMPC; Golgi Phosphoprotein 4; GOLPH4; P138; Golgi-Localized Phosphoprotein Of 130 KDa; Golgi Integral Membrane Protein, Cis; Golgi Phosphoprotein Of 130 KDa; Cis Golgi-Localized Calcium-Binding Protein; 130 KDa Golgi-Localized Phosphoprotein; Type II Golgi Membrane Protein; GIMPc

## Background

Gene Name: GOLIM4

NCBI Gene Entry: [27333](#)

## Storage

Store at liquid nitrogen for 1 year.

## Kit Components

1. Human GOLIM4 Knockdown Cell Line (Wb-Validated)
2. Wild-type cell line

## Parental Cell Line

Human cell line supplied by the client

## Validation Methods

RT-qPCR, Western blotting (WB)

## Shipping

Shipped on Dry Ice.

## Instructions For Use

This knockdown cell line should be paired with wild-type cell line for use.

**Note:** This product is for research use only.

## Validation Data

---

### SUPPORT

SUPPORT@GENUINBIOTECH.COM  
TEL: +1-540-855-7041

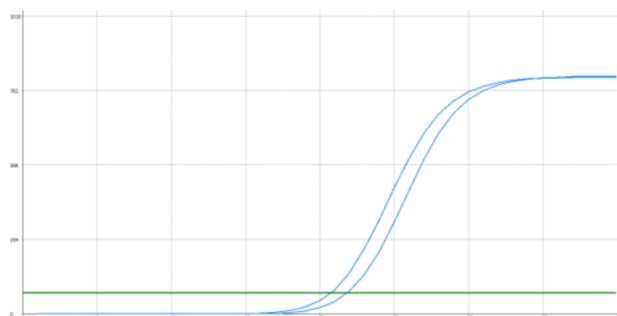
### ORDERS

SALES@GENUINBIOTECH.COM  
FAX: +1-540-855-7041

[WWW.GENUINBIOTECH.COM](http://WWW.GENUINBIOTECH.COM)

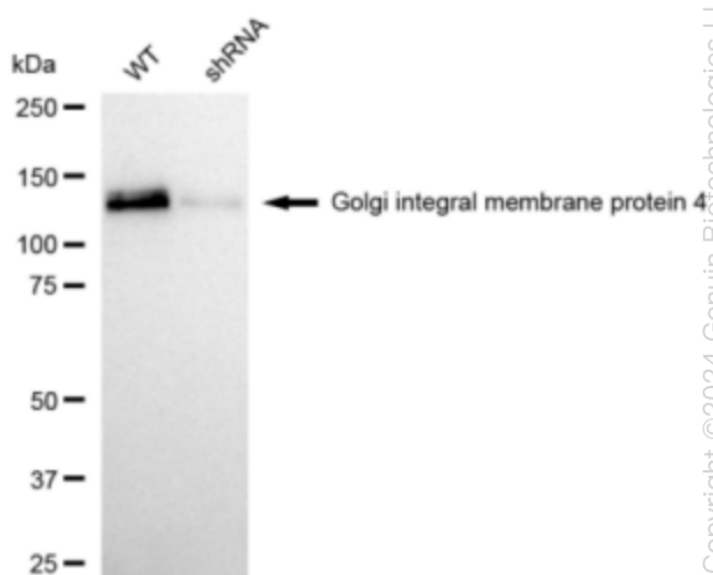
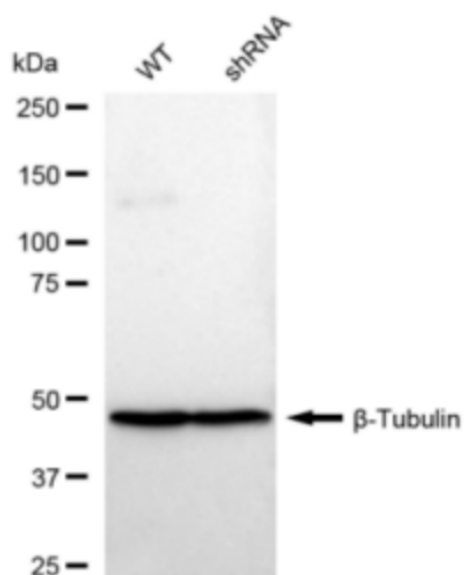
## Human GOLIM4 Knockdown Cell Line (WB-Validated)

PAGE 2



| Genotype                        | Ct Value |
|---------------------------------|----------|
| Wild-Type                       | 20.34    |
| Knock-Down                      | 21.44    |
| $\Delta Ct (Ct_{KD} - Ct_{WT})$ | 1.10     |
| % mRNA Reduction                | ↓ 53%    |

RT-qPCR analysis. HeLa cells were infected with GOLIM4-specific shRNA lentiviral particles, total RNA was extracted from wild-type and knockdown cells, RT-qPCR was performed using gene-specific primers.  $\Delta Ct (Ct_{KD} - Ct_{WT})$  was used to calculate mRNA reduction (%) between wild-type and knockdown cells using the following formula:  $(1 - 1/2^{\Delta Ct}) \times 100\%$ .



Western blotting analysis. GOLIM4 protein expression in wild-type (WT) and shRNA knockdown (KD) HeLa cells was detected using Western blotting.  $\beta$ -Tubulin served as a loading control. The blots were incubated with primary antibodies (Cat#62015, 1:5,000) against GOLIM4 and  $\beta$ -Tubulin, respectively, followed by incubating with HRP-conjugated goat anti-rabbit secondary antibody (Cat#201, 1:20,000). Images were developed using FeQ™ ECL Substrate Kit (Cat#226).

### SUPPORT

SUPPORT@GENUINBIOTECH.COM  
TEL: +1-540-855-7041

### ORDERS

SALES@GENUINBIOTECH.COM  
FAX: +1-540-855-7041

WWW.GENUINBIOTECH.COM