

Human GORASP1 Knockdown Cell Line (WB-Validated)



Catalog #: C62016

Aliases

GORASP1; Golgi Reassembly Stacking Protein 1; GRASP65; Golgi Phosphoprotein 5; GOLPH5; P65; Golgi Reassembly-Stacking Protein Of 65 KDa; Golgi Reassembly Stacking Protein 1, 65kDa; Golgi Peripheral Membrane Protein P65; Golgi Reassembly-Stacking Protein 1; FLJ23443; Golgi Reassembly And Stacking Protein 1

Background

Gene Name: GORASP1

NCBI Gene Entry: [64689](#)

Storage

Store at liquid nitrogen for 1 year.

Kit Components

1. Human GORASP1 Knockdown Cell Line (Wb-Validated)
2. Wild-type cell line

Parental Cell Line

Human cell line supplied by the client

Validation Methods

RT-qPCR, Western blotting (WB)

Shipping

Shipped on Dry Ice.

Instructions For Use

This knockdown cell line should be paired with wild-type cell line for use.

Note: This product is for research use only.

Validation Data

SUPPORT

SUPPORT@GENUINBIOTECH.COM
TEL: +1-540-855-7041

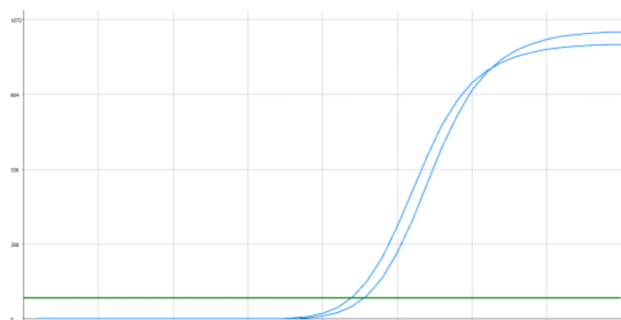
ORDERS

SALES@GENUINBIOTECH.COM
FAX: +1-540-855-7041

WWW.GENUINBIOTECH.COM

Human GORASP1 Knockdown Cell Line (WB-Validated)

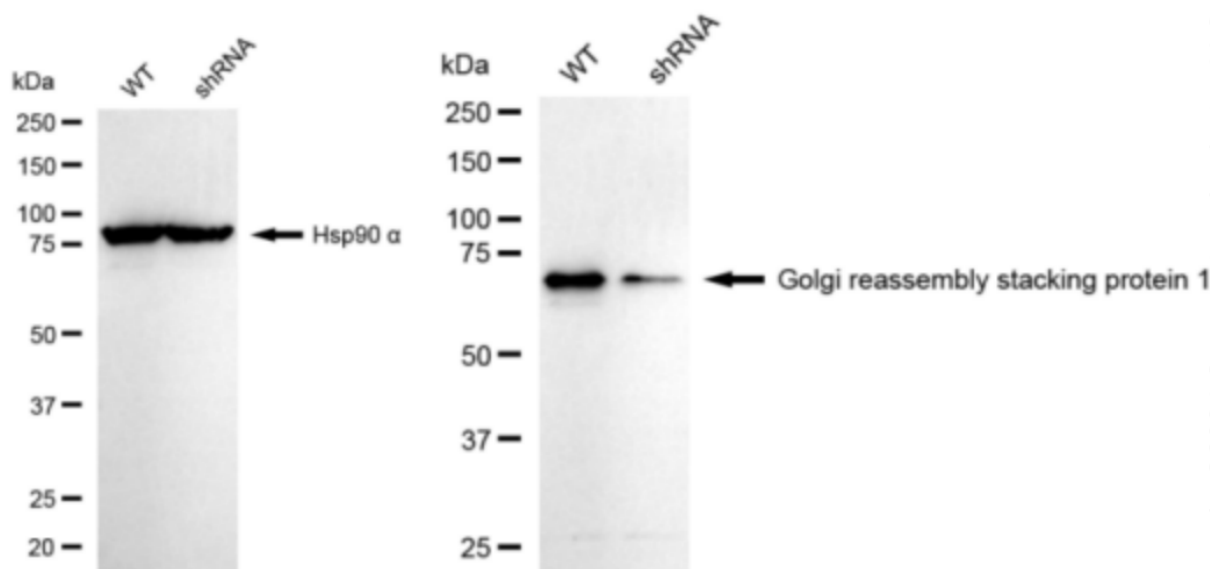
PAGE 2



Genotype	Ct Value
Wild-Type	21.80
Knock-Down	22.72
$\Delta Ct (Ct_{KD} - Ct_{WT})$	0.92
% mRNA Reduction	↓ 47%

Copyright ©2024 Genuin Biotechnologies LLC

RT-qPCR analysis. HeLa cells were infected with GORASP1-specific shRNA lentiviral particles, total RNA was extracted from wild-type and knockdown cells, RT-qPCR was performed using gene-specific primers. $\Delta Ct (Ct_{KD} - Ct_{WT})$ was used to calculate mRNA reduction (%) between wild-type and knockdown cells using the following formula: $(1 - 1/2^{\Delta Ct}) \times 100\%$.



Copyright ©2024 Genuin Biotechnologies LLC

Western blotting analysis. GORASP1 protein expression in wild-type (WT) and shRNA knockdown (KD) HeLa cells was detected using Western blotting. Hsp90 α served as a loading control. The blots were incubated with primary antibodies (Cat#62016, 1:5,000) against GORASP1 and Hsp90 α , respectively, followed by incubating with HRP-conjugated goat anti-rabbit secondary antibody (Cat#201, 1:20,000). Images were developed using FeQ™ ECL Substrate Kit (Cat#226).

SUPPORT

SUPPORT@GENUINBIOTECH.COM
TEL: +1-540-855-7041

ORDERS

SALES@GENUINBIOTECH.COM
FAX: +1-540-855-7041

WWW.GENUINBIOTECH.COM