

# Human CDKN2C Knockdown Cell Line (WB-Validated)



**Catalog #: C62030**

## Aliases

CDKN2C; Cyclin Dependent Kinase Inhibitor 2C; INK4C; P18; Cyclin-Dependent Kinase Inhibitor 2C (P18, Inhibits CDK4); Cyclin-Dependent Kinase 4 Inhibitor C; P18-INK6; Cyclin-Dependent Kinase 6 Inhibitor P18; Cyclin-Dependent Kinase 6 Inhibitor; Cyclin-Dependent Inhibitor; CDK6 Inhibitor P18; P18-INK4C; P18-INK4c; CDKN6

## Background

Gene Name: CDKN2C  
NCBI Gene Entry: [1031](#)

## Storage

Store at liquid nitrogen for 1 year.

## Kit Components

1. Human CDKN2C Knockdown Cell Line (Wb-Validated)
2. Wild-type cell line

## Parental Cell Line

Human cell line supplied by the client

## Validation Methods

RT-qPCR, Western blotting (WB)

## Shipping

Shipped on Dry Ice.

## Instructions For Use

This knockdown cell line should be paired with wild-type cell line for use.

**Note:** This product is for research use only.

## Validation Data

---

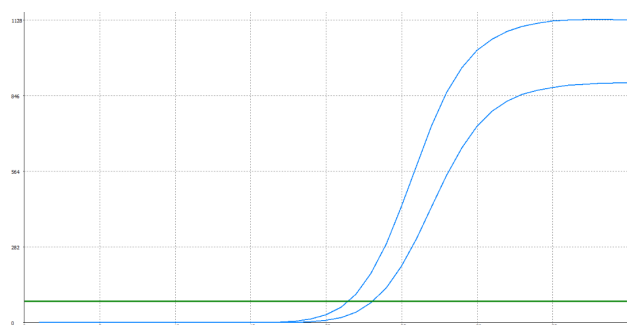
### SUPPORT

SUPPORT@GENUINBIOTECH.COM  
TEL: +1-540-855-7041

### ORDERS

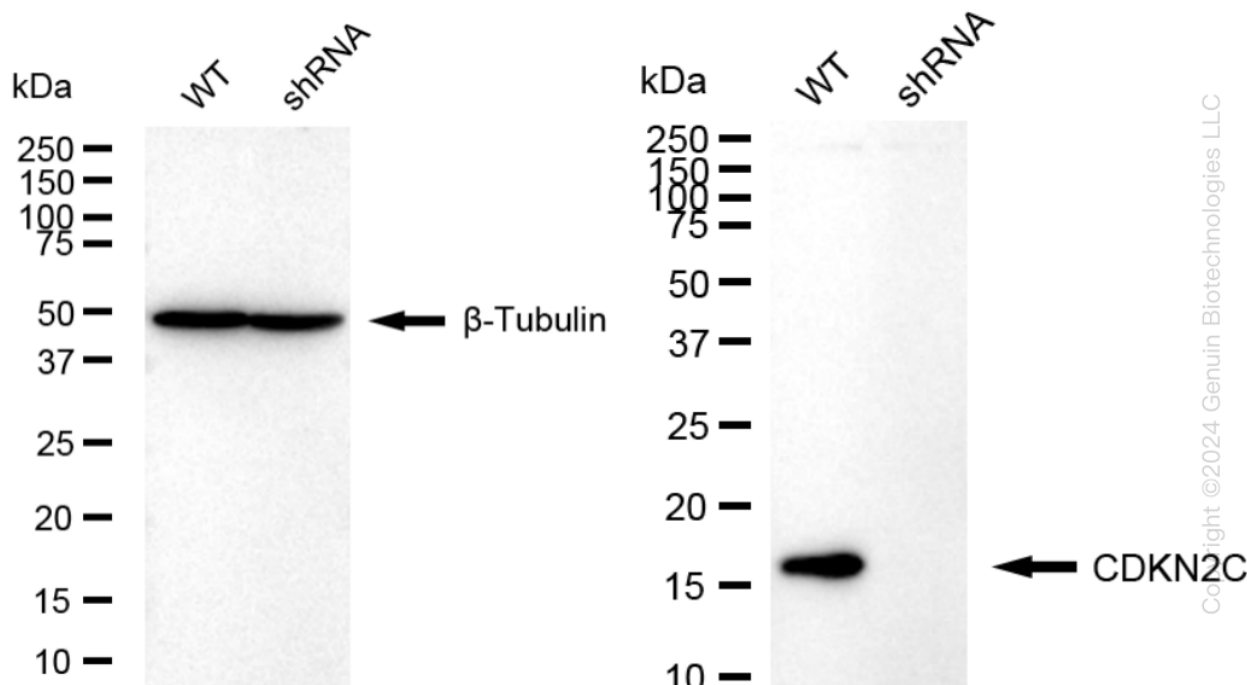
SALES@GENUINBIOTECH.COM  
FAX: +1-540-855-7041

[WWW.GENUINBIOTECH.COM](http://WWW.GENUINBIOTECH.COM)



Genotype	Ct Value
Wild-Type	21.46
Knock-Down	22.70
$\Delta Ct (Ct_{KD} - Ct_{WT})$	1.24
% mRNA Reduction	↓ 58%

RT-qPCR analysis. HeLa cells were infected with CDKN2C-specific shRNA lentiviral particles, total RNA was extracted from wild-type and knockdown cells, RT-qPCR was performed using gene-specific primers.  $\Delta Ct (Ct_{KD} - Ct_{WT})$  was used to calculate mRNA reduction (%) between wild-type and knockdown cells using the following formula:  $(1 - 1/2^{\Delta Ct}) \times 100\%$ .



Western blotting analysis. CDKN2C protein expression in wild-type (WT) and shRNA knockdown (KD) HeLa cells was detected using Western blotting.  $\beta$ -Tubulin served as a loading control. The blots were incubated with primary antibodies against CDKN2C and  $\beta$ -Tubulin, respectively, followed by incubating with HRP-conjugated goat anti-rabbit secondary antibody. Images were developed using FeQ™ ECL Substrate Kit.