

Human CTSH Knockdown Cell Line (WB-Validated)



Catalog #: C62056

Aliases

CTSH; Cathepsin H; ACC-4; ACC-5; ACC4; ACC5; CPSB; Pro-Cathepsin H; N-Benzoylarginine-Beta-Naphthylamide Hydrolase; Cathepsin B3; Cathepsin BA; EC 3.4.22.16; EC 3.4.22; Aleurain

Background

Gene Name: CTSH
NCBI Gene Entry: [1512](#)

Storage

Store at liquid nitrogen for 1 year.

Kit Components

1. Human CTSH Knockdown Cell Line (Wb-Validated)
2. Wild-type cell line

Parental Cell Line

Human cell line supplied by the client

Validation Methods

RT-qPCR, Western blotting (WB)

Shipping

Shipped on Dry Ice.

Instructions For Use

This knockdown cell line should be paired with wild-type cell line for use.

Note: This product is for research use only.

Validation Data

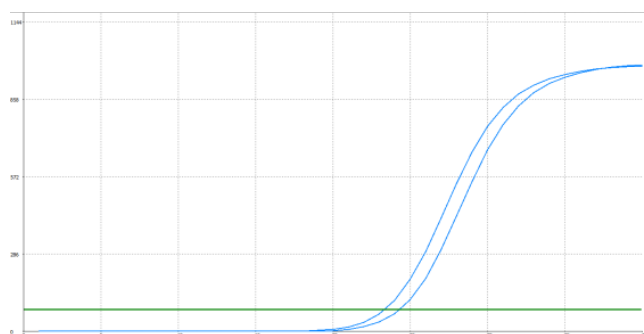
SUPPORT

SUPPORT@GENUINBIOTECH.COM
TEL: +1-540-855-7041

ORDERS

SALES@GENUINBIOTECH.COM
FAX: +1-540-855-7041

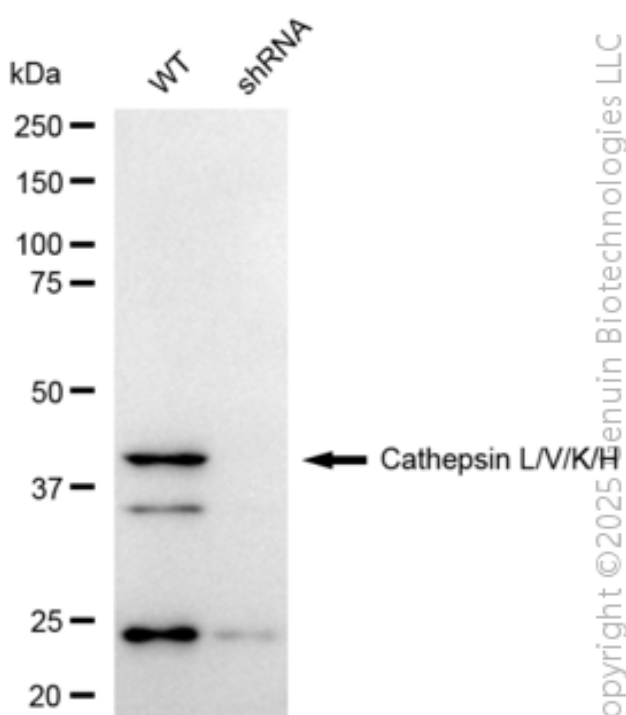
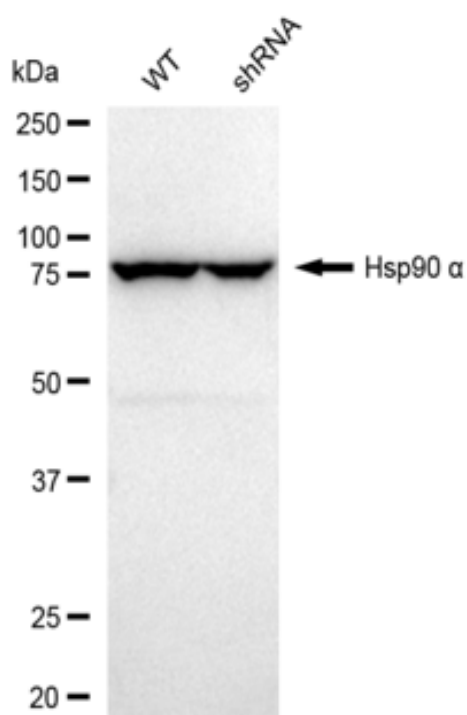
WWW.GENUINBIOTECH.COM



Genotype	Ct Value
Wild-Type	23.11
Knock-Down	24.09
Δ Ct (CtKD-CtWT)	0.98
% mRNA Reduction	49%

Copyright © 2025 Genuin Biotechnologies LLC

RT-qPCR analysis. HeLa cells were infected with CTSH-specific shRNA lentiviral particles, total RNA was extracted from wild-type and knockdown cells, RT-qPCR was performed using gene-specific primers. Δ Ct (CtKD-CtWT) was used to calculate mRNA reduction (%) between wild-type and knockdown cells using the following formula: $(1 - 1/2^{\Delta\text{Ct}}) \times 100\%$.



Copyright © 2025 Genuin Biotechnologies LLC

Western blotting analysis. CTSH protein expression in wild-type (WT) and shRNA knockdown (KD) HeLa cells was detected using Western blotting. Hsp90 α served as a loading control. The blots were incubated with primary antibodies against CTSH and Hsp90 α , respectively, followed by incubating with HRP-conjugated goat anti-rabbit secondary antibody. Images were developed

Human CTSH Knockdown Cell Line (WB-Validated)

PAGE 3

using FeQ™ ECL Substrate Kit.

SUPPORT

SUPPORT@GENUINBIOTECH.COM
TEL: +1-540-855-7041

ORDERS

SALES@GENUINBIOTECH.COM
FAX:+1-540-855-7041

WWW.GENUINBIOTECH.COM