

Human CD82 Knockdown Cell Line (WB-Validated)



Catalog #: C62059

Aliases

CD82; CD82 Molecule 2; TSPAN27; IA4; CD82 Antigen; KAI1; R2; Kangai 1 (Suppression Of Tumorigenicity 6, Prostate; CD82 Antigen (R2 Leukocyte Antigen, Antigen Detected By Monoclonal And Antibody IA4)); Metastasis Suppressor Kangai-1; Inducible Membrane Protein R2; Tetraspanin-27; C33 Antigen; Tspan-27; SAR2; Suppressor Of Tumorigenicity 6 Protein; Suppression Of Tumorigenicity 6; R2 Leukocyte Antigen; GR15; 4F9; C33

Background

Gene Name: CD82

NCBI Gene Entry: [3732](#)

Storage

Store at liquid nitrogen for 1 year.

Kit Components

1. Human CD82 Knockdown Cell Line (Wb-Validated)
2. Wild-type cell line

Parental Cell Line

Human cell line supplied by the client

Validation Methods

RT-qPCR, Western blotting (WB)

Shipping

Shipped on Dry Ice.

Instructions For Use

This knockdown cell line should be paired with wild-type cell line for use.

Note: This product is for research use only.

Validation Data

SUPPORT

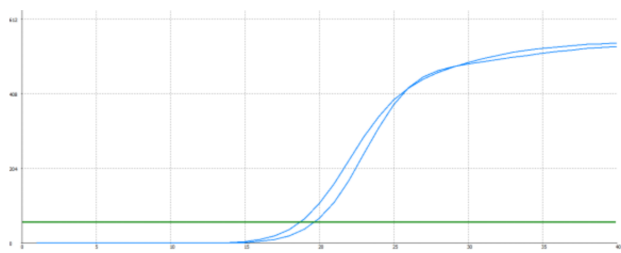
SUPPORT@GENUINBIOTECH.COM
TEL: +1-540-855-7041

ORDERS

SALES@GENUINBIOTECH.COM
FAX: +1-540-855-7041

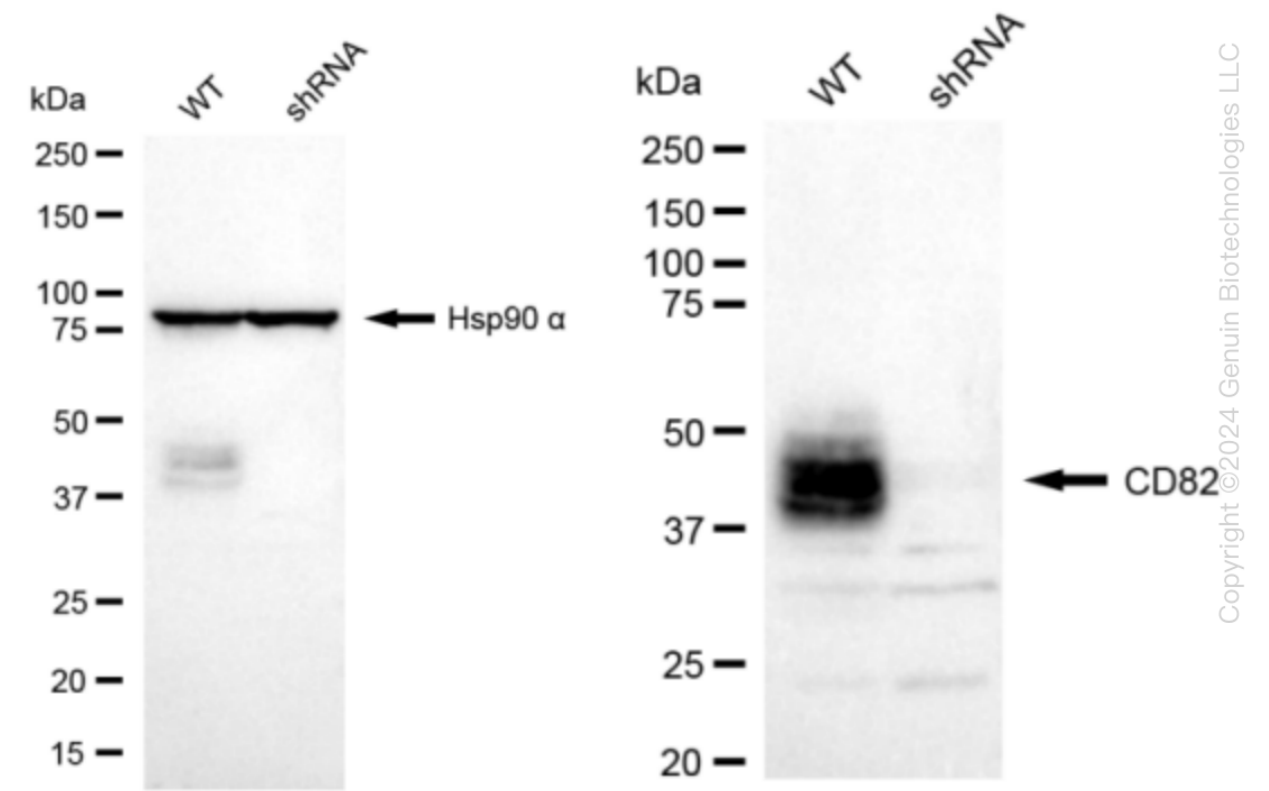
WWW.GENUINBIOTECH.COM

Human CD82 Knockdown Cell Line (WB-Validated)



Genotype	Ct Value
Wild-Type	18.04
Knock-Down	19.02
Δ Ct (Ct _{KD} -Ct _{WT})	0.98
% mRNA Reduction	↓ 49%

RT-qPCR analysis. HT-1080 cells were infected with CD82-specific shRNA lentiviral particles, total RNA was extracted from wild-type and knockdown cells, RT-qPCR was performed using gene-specific primers. Δ Ct (Ct_{KD}-Ct_{WT}) was used to calculate mRNA reduction (%) between wild-type and knockdown cells using the following formula: $(1-1/2^{\Delta$ Ct) x 100%.



Western blotting analysis. CD82 protein expression in wild-type (WT) and shRNA knockdown (KD) HT-1080 cells was detected using Western blotting. Hsp90 α served as a loading control. The blots were incubated with primary antibodies (Cat#62059, 1:5,000) against CD82 and Hsp90 α , respectively, followed by incubating with HRP-conjugated goat anti-rabbit secondary antibody (Cat#201, 1:20,000). Images were developed using FeQ™ ECL Substrate Kit (Cat#226).

SUPPORT

SUPPORT@GENUINBIOTECH.COM
TEL: +1-540-855-7041

ORDERS

SALES@GENUINBIOTECH.COM
FAX: +1-540-855-7041

WWW.GENUINBIOTECH.COM