

Human ELAVL1 Knockdown Cell Line (WB-Validated)



Catalog #: C62063

Aliases

ELAVL1; ELAV Like RNA Binding Protein 1; HUR; ELAV (Embryonic Lethal, Antibodynormal Vision, Drosophila)-Like 1 (Hu Antigen R); Embryonic Lethal, Antibodynormal Vision, Drosophila, Homolog-Like 1; ELAV-Like Protein 1; Hu Antigen R; Hu-Antigen R; MelG; HuR; Hua; ELAV1; MELG; HUA

Background

Gene Name: ELAVL1

NCBI Gene Entry: [1994](#)

Storage

Store at liquid nitrogen for 1 year.

Kit Components

1. Human ELAVL1 Knockdown Cell Line (Wb-Validated)
2. Wild-type cell line

Parental Cell Line

Human cell line supplied by the client

Validation Methods

RT-qPCR, Western blotting (WB)

Shipping

Shipped on Dry Ice.

Instructions For Use

This knockdown cell line should be paired with wild-type cell line for use.

Note: This product is for research use only.

Validation Data

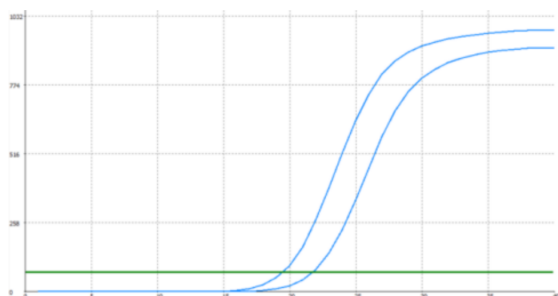
SUPPORT

SUPPORT@GENUINBIOTECH.COM
TEL: +1-540-855-7041

ORDERS

SALES@GENUINBIOTECH.COM
FAX: +1-540-855-7041

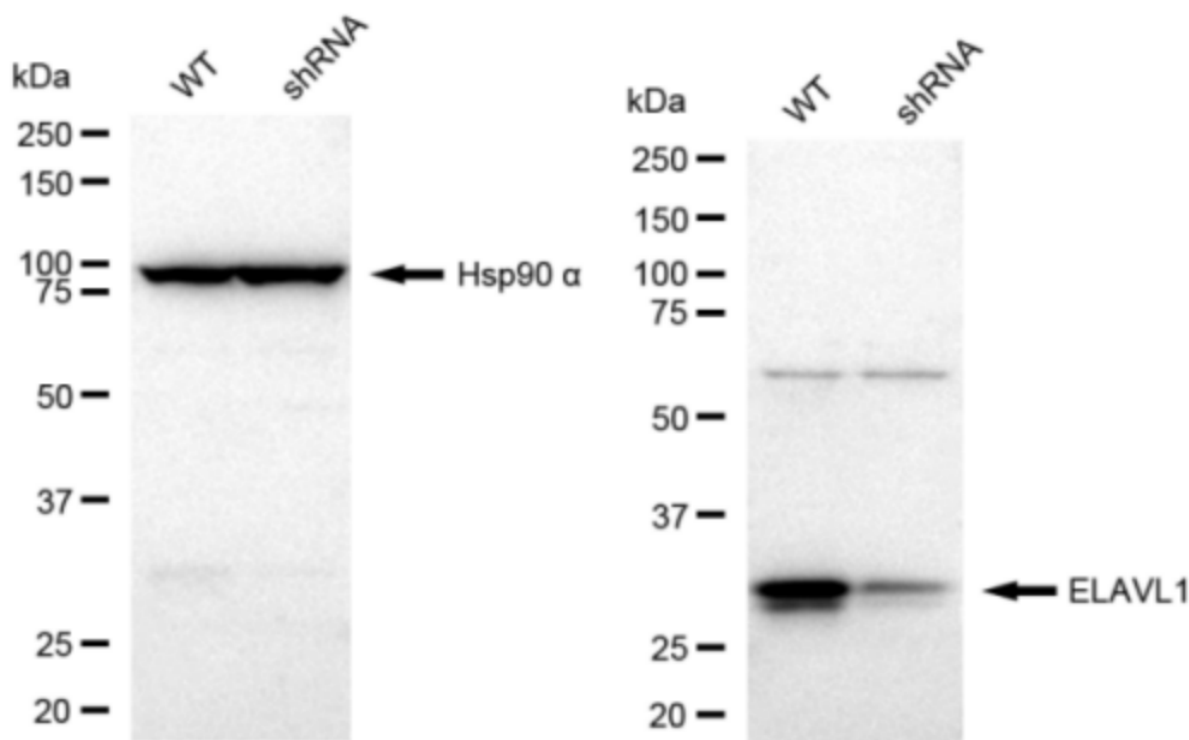
WWW.GENUINBIOTECH.COM



Genotype	Ct Value
Wild-Type	19.39
Knock-Down	21.54
$\Delta Ct (Ct_{KD}-Ct_{WT})$	2.15
% mRNA Reduction	↓ 77%

Copyright ©2024 Genuin Biotechnologies LLC

RT-qPCR analysis. HeLa cells were infected with ELAVL1-specific shRNA lentiviral particles, total RNA was extracted from wild-type and knockdown cells, RT-qPCR was performed using gene-specific primers. $\Delta Ct (Ct_{KD}-Ct_{WT})$ was used to calculate mRNA reduction (%) between wild-type and knockdown cells using the following formula: $(1-1/2^{\Delta Ct}) \times 100\%$.



Copyright ©2024 Genuin Biotechnologies LLC

Western blotting analysis. ELAVL1 protein expression in wild-type (WT) and shRNA knockdown (KD) HeLa cells was detected using Western blotting. Hsp90 α served as a loading control. The blots were incubated with primary antibodies (Cat#62063, 1:5,000) against ELAVL1 and Hsp90 α , respectively, followed by incubating with HRP-conjugated goat anti-rabbit secondary antibody (Cat#201, 1:20,000). Images were developed using FeQ™ ECL Substrate Kit (Cat#226).