

Human GEMIN2 Knockdown Cell Line (WB-Validated)



Catalog #: C62067

Aliases

GEMIN2; Gem Nuclear Organelle Associated Protein 2; SIP1; Survival Of Motor Neuron Protein Interacting Protein 1; Gem-Associated Protein; Component Of Gems; Gemin-2; Survival Of Motor Neuron Protein-Interacting Protein 1; Gem (Nuclear Organelle) Associated Protein 2; SMN Interacting Protein 1-Delta; SMN-Interacting Protein 1; SIP1-Delta

Background

Gene Name: GEMIN2

NCBI Gene Entry: [8487](#)

Storage

Store at liquid nitrogen for 1 year.

Kit Components

1. Human GEMIN2 Knockdown Cell Line (Wb-Validated)
2. Wild-type cell line

Parental Cell Line

Human cell line supplied by the client

Validation Methods

RT-qPCR, Western blotting (WB)

Shipping

Shipped on Dry Ice.

Instructions For Use

This knockdown cell line should be paired with wild-type cell line for use.

Note: This product is for research use only.

Validation Data

SUPPORT

SUPPORT@GENUINBIOTECH.COM
TEL: +1-540-855-7041

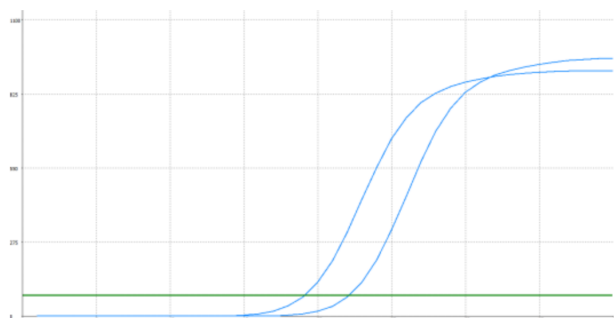
ORDERS

SALES@GENUINBIOTECH.COM
FAX: +1-540-855-7041

WWW.GENUINBIOTECH.COM

Human GEMIN2 Knockdown Cell Line (WB-Validated)

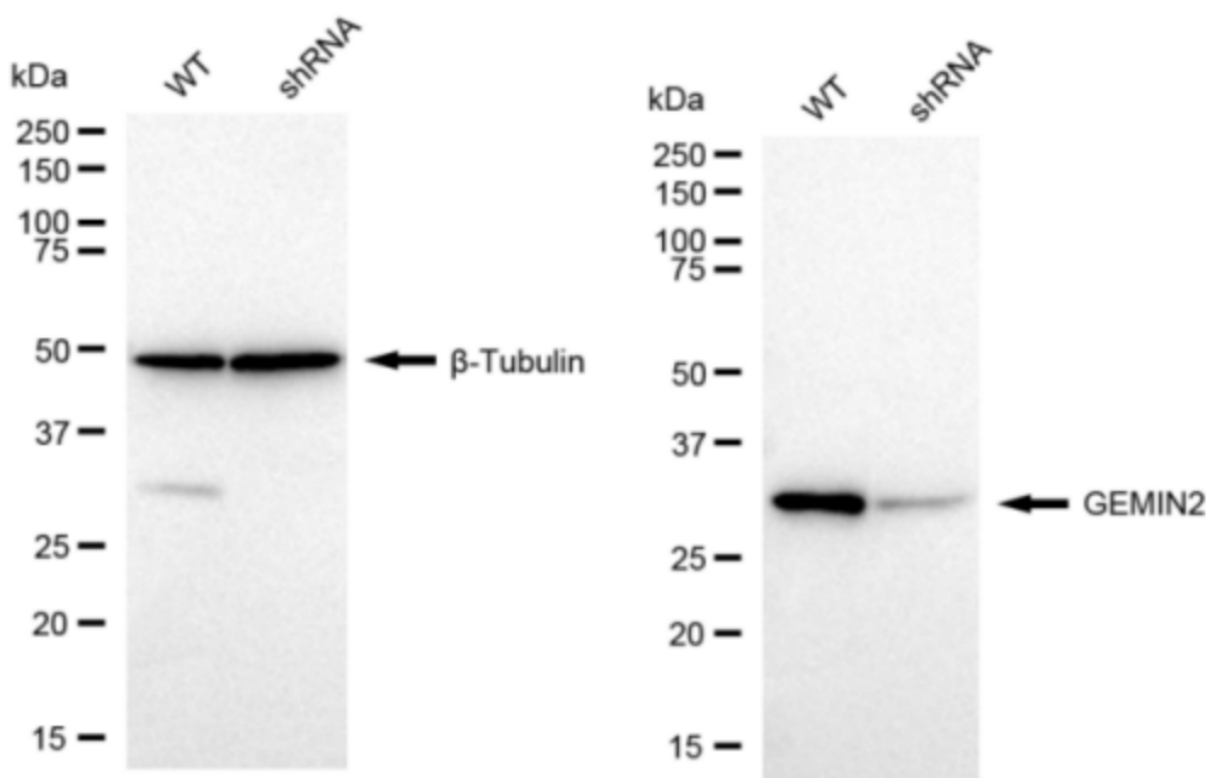
PAGE 2



Genotype	Ct Value
Wild-Type	18.81
Knock-Down	21.92
$\Delta Ct (Ct_{KD} - Ct_{WT})$	3.11
% mRNA Reduction	↓ 88%

Copyright ©2024 Genuin Biotechnologies LLC

RT-qPCR analysis. HeLa cells were infected with GEMIN2-specific shRNA lentiviral particles, total RNA was extracted from wild-type and knockdown cells, RT-qPCR was performed using gene-specific primers. $\Delta Ct (Ct_{KD} - Ct_{WT})$ was used to calculate mRNA reduction (%) between wild-type and knockdown cells using the following formula: $(1 - 1/2^{\Delta Ct}) \times 100\%$.



Copyright ©2024 Genuin Biotechnologies LLC

Western blotting analysis. GEMIN2 protein expression in wild-type (WT) and shRNA knockdown (KD) HeLa cells was detected using Western blotting. β -Tubulin served as a loading control. The blots were incubated with primary antibodies (Cat#62067, 1:5,000) against GEMIN2 and β -Tubulin, respectively, followed by incubating with HRP-conjugated goat anti-rabbit secondary antibody (Cat#201, 1:20,000). Images were developed using FeQ™ ECL Substrate Kit (Cat#226).

SUPPORT

SUPPORT@GENUINBIOTECH.COM
TEL: +1-540-855-7041

ORDERS

SALES@GENUINBIOTECH.COM
FAX: +1-540-855-7041

WWW.GENUINBIOTECH.COM