

Human GOPC Knockdown Cell Line (WB-Validated)



Catalog #: C62074

Aliases

GOPC; Golgi Associated PDZ And Coiled-Coil Motif Containing; PIST; FIG; CAL; DJ94G16.2; GOPC1; Golgi-Associated PDZ And Coiled-Coil Motif-Containing Protein; PDZ Protein Interacting Specifically With TC10; CFTR-Associated Ligand; Fused In Glioblastoma; PDZ/Coiled-Coil Domain Binding Partner For The Rho-Family GTPase TC10; Golgi-Associated PDZ And Coiled-Coil Motif Containing Protein; DJ94G16.2 PIST

Background

Gene Name: GOPC

NCBI Gene Entry: [57120](#)

Storage

Store at liquid nitrogen for 1 year.

Kit Components

1. Human GOPC Knockdown Cell Line (Wb-Validated)
2. Wild-type cell line

Parental Cell Line

Human cell line supplied by the client

Validation Methods

RT-qPCR, Western blotting (WB)

Shipping

Shipped on Dry Ice.

Instructions For Use

This knockdown cell line should be paired with wild-type cell line for use.

Note: This product is for research use only.

Validation Data

SUPPORT

SUPPORT@GENUINBIOTECH.COM
TEL: +1-540-855-7041

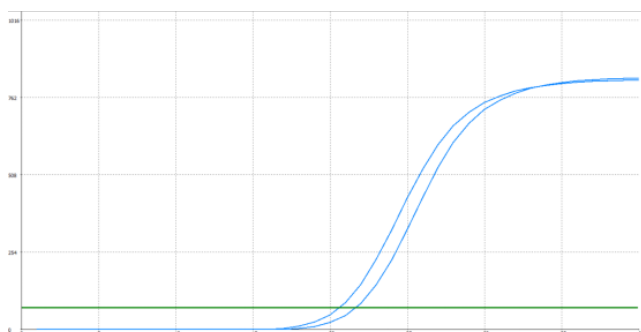
ORDERS

SALES@GENUINBIOTECH.COM
FAX: +1-540-855-7041

WWW.GENUINBIOTECH.COM

Human GOPC Knockdown Cell Line (WB-Validated)

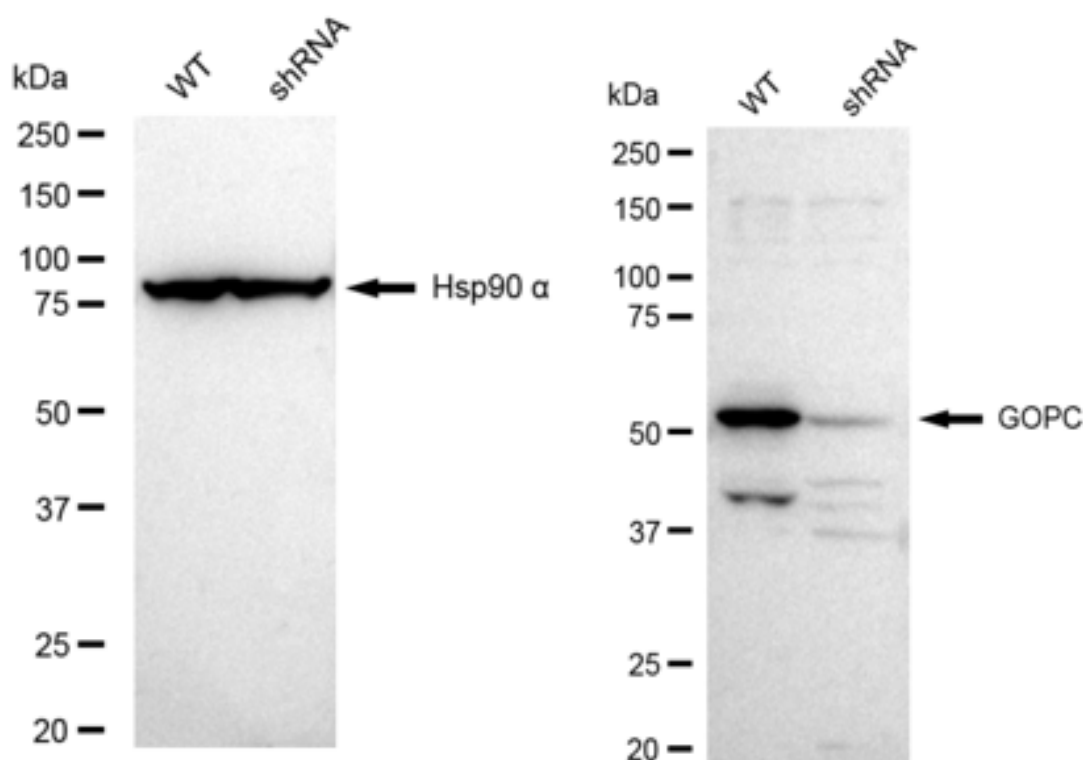
PAGE 2



Genotype	Ct Value
Wild-Type	20.26
Knock-Down	21.32
ΔCt (CtKD-CtWT)	1.06
% mRNA Reduction	52%

Copyright ©2025 Genuin Biotechnologies LLC

RT-qPCR analysis. HeLa cells were infected with GOPC-specific shRNA lentiviral particles, total RNA was extracted from wild-type and knockdown cells, RT-qPCR was performed using gene-specific primers. ΔCt (CtKD-CtWT) was used to calculate mRNA reduction (%) between wild-type and knockdown cells using the following formula: $(1 - 1/2^{\Delta Ct}) \times 100\%$.



Copyright ©2025 Genuin Biotechnologies LLC

Western blotting analysis. GOPC protein expression in wild-type (WT) and shRNA knockdown (KD) HeLa cells was detected using Western blotting. Hsp90 α served as a loading control. The blots were incubated with primary antibodies against GOPC and Hsp90 α , respectively, followed by incubating with HRP-conjugated goat anti-rabbit secondary antibody. Images were developed using FeQ™ ECL Substrate Kit.

SUPPORT

SUPPORT@GENUINBIOTECH.COM
TEL: +1-540-855-7041

ORDERS

SALES@GENUINBIOTECH.COM
FAX: +1-540-855-7041

WWW.GENUINBIOTECH.COM

