

# Human LGI1 Knockdown Cell Line (WB-Validated)



**Catalog #: C62086**

## Aliases

LGI1; Leucine Rich Glioma Inactivated 1; Epitempin-1; EPITEMPIN; IB1099; ETL1; EPT; Leucine-Rich Glioma-Inactivated Protein 1; Epilepsy, Partial; ADPAEF; ADPEAF; ADLTE

## Background

Gene Name: LGI1

NCBI Gene Entry: [9211](#)

## Storage

Store at liquid nitrogen for 1 year.

## Kit Components

1. Human LGI1 Knockdown Cell Line (Wb-Validated)
2. Wild-type cell line

## Parental Cell Line

Human cell line supplied by the client

## Validation Methods

RT-qPCR, Western blotting (WB)

## Shipping

Shipped on Dry Ice.

## Instructions For Use

This knockdown cell line should be paired with wild-type cell line for use.

**Note:** This product is for research use only.

## Validation Data

---

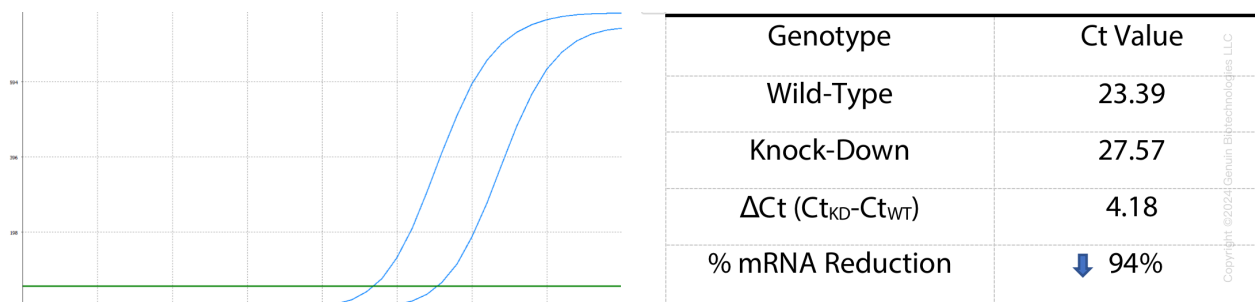
### SUPPORT

SUPPORT@GENUINBIOTECH.COM  
TEL: +1-540-855-7041

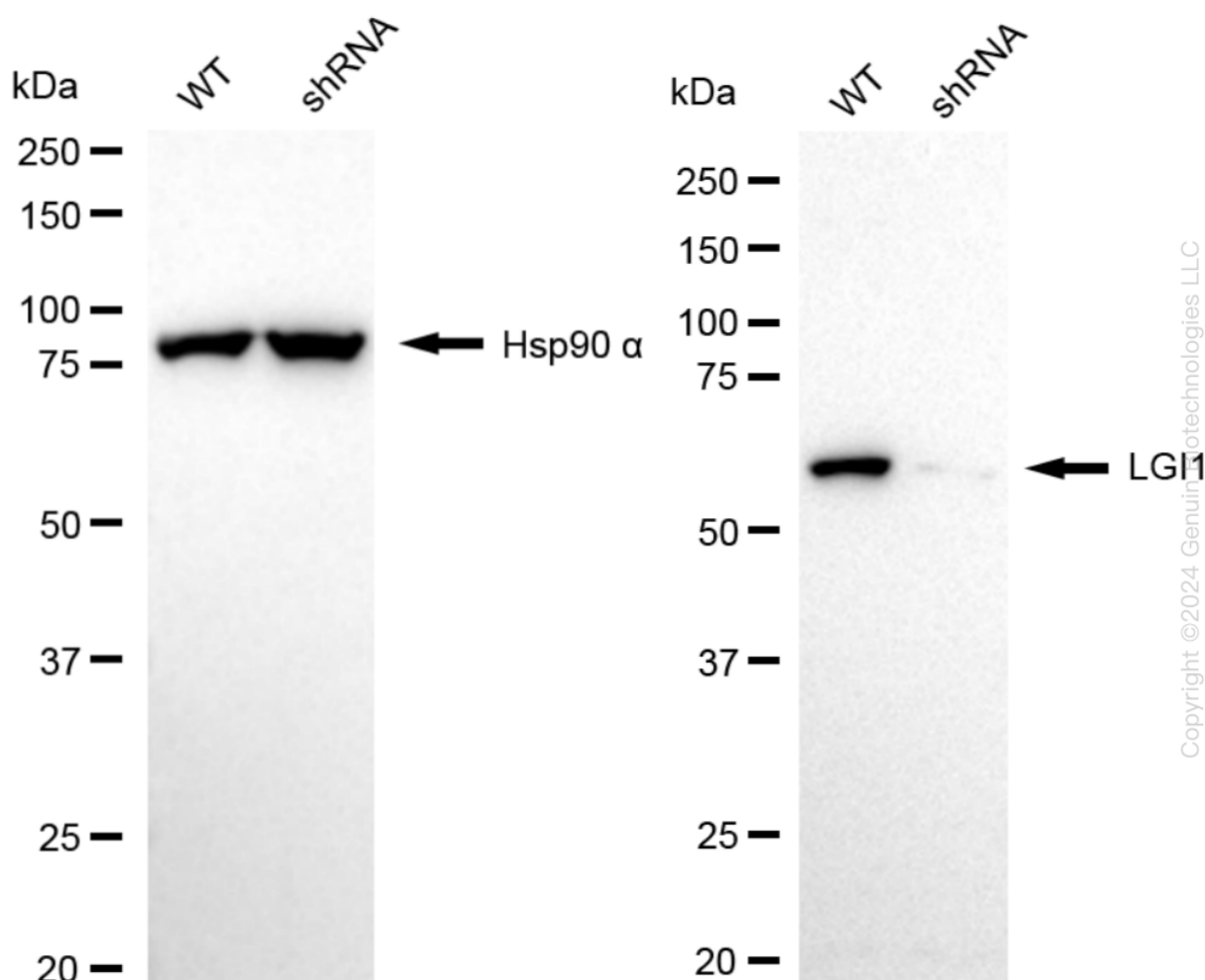
### ORDERS

SALES@GENUINBIOTECH.COM  
FAX: +1-540-855-7041

[WWW.GENUINBIOTECH.COM](http://WWW.GENUINBIOTECH.COM)



RT-qPCR analysis. HeLa cells were infected with LGI1-specific shRNA lentiviral particles, total RNA was extracted from wild-type and knockdown cells, RT-qPCR was performed using gene-specific primers.  $\Delta\text{Ct}$  (CtKD-CtWT) was used to calculate mRNA reduction (%) between wild-type and knockdown cells using the following formula:  $(1-1/2^{\Delta\text{Ct}}) \times 100\%$ .



Western blotting analysis. LGI1 protein expression in wild-type (WT) and shRNA knockdown (KD) HeLa cells was detected using Western blotting. Hsp90  $\alpha$  served as a loading control. The blots were incubated with primary antibodies against LGI1 and Hsp90  $\alpha$ , respectively, followed by incubating with HRP-conjugated goat anti-rabbit secondary antibody. Images were developed using FeQ™ ECL Substrate Kit.

