

# Human GTF2I Knockdown Cell Line (WB-Validated)



**Catalog #: C62090**

## Aliases

GTF2I; General Transcription Factor Ii; TFII-I; SPIN; BAP-135; BTKAP1; WBSCR6; IB291; DIWS; Bruton Tyrosine Kinase-Associated Protein 135; General Transcription Factor II-I; SRF-Phox1-Interacting Protein; GTFII-I; BAP135; Williams-Beuren Syndrome Chromosomal Region 6 Protein; Williams-Beuren Syndrome Chromosome Region 6; General Transcription Factor II, I; BTK-Associated Protein, 135kD; BTK-Associated Protein 135; WBS

## Background

Gene Name: GTF2I

NCBI Gene Entry: [2969](#)

## Storage

Store at liquid nitrogen for 1 year.

## Kit Components

1. Human GTF2I Knockdown Cell Line (Wb-Validated)
2. Wild-type cell line

## Parental Cell Line

Human cell line supplied by the client

## Validation Methods

RT-qPCR, Western blotting (WB)

## Shipping

Shipped on Dry Ice.

## Instructions For Use

This knockdown cell line should be paired with wild-type cell line for use.

**Note:** This product is for research use only.

## Validation Data

---

### SUPPORT

SUPPORT@GENUINBIOTECH.COM  
TEL: +1-540-855-7041

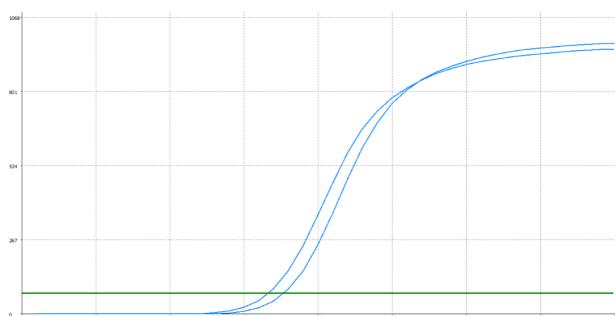
### ORDERS

SALES@GENUINBIOTECH.COM  
FAX: +1-540-855-7041

[WWW.GENUINBIOTECH.COM](http://WWW.GENUINBIOTECH.COM)

## Human GTF2I Knockdown Cell Line (WB-Validated)

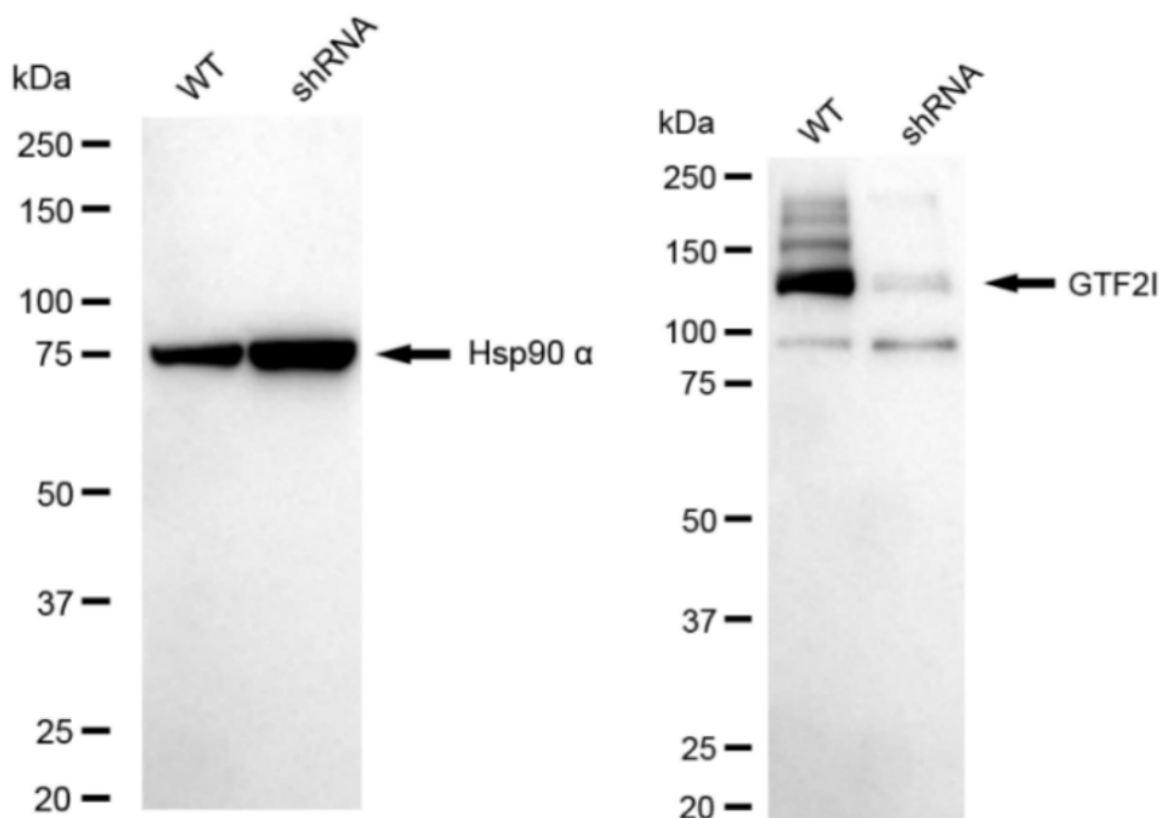
PAGE 2



Genotype	Ct Value
Wild-Type	16.45
Knock-Down	17.52
$\Delta Ct (Ct_{KD} - Ct_{WT})$	1.07
% mRNA Reduction	↓ 52%

Copyright ©2024 Genuin Biotechnologies LLC

RT-qPCR analysis. HeLa cells were infected with GTF2I-specific shRNA lentiviral particles, total RNA was extracted from wild-type and knockdown cells, RT-qPCR was performed using gene-specific primers.  $\Delta Ct (Ct_{KD} - Ct_{WT})$  was used to calculate mRNA reduction (%) between wild-type and knockdown cells using the following formula:  $(1 - 1/2^{\Delta Ct}) \times 100\%$ .



Copyright ©2024 Genuin Biotechnologies LLC

Western blotting analysis. GTF2I protein expression in wild-type (WT) and shRNA knockdown (KD) HeLa cells was detected using Western blotting. Hsp90  $\alpha$  served as a loading control. The blots were incubated with primary antibodies (Cat#62090, 1:5,000) against GTF2I and Hsp90  $\alpha$ , respectively, followed by incubating with HRP-conjugated goat anti-rabbit secondary antibody (Cat#201, 1:20,000). Images were developed using FeQ™ ECL Substrate Kit (Cat#226).

### SUPPORT

SUPPORT@GENUINBIOTECH.COM  
TEL: +1-540-855-7041

### ORDERS

SALES@GENUINBIOTECH.COM  
FAX: +1-540-855-7041

WWW.GENUINBIOTECH.COM

