

Human HRAS Knockdown Cell Line (WB-Validated)



Catalog #: C62107

Aliases

HRAS; HRas Proto-Oncogene, GTPase; HRAS1; V-Ha-Ras Harvey Rat Sarcoma Viral Oncogene Homolog; Harvey Rat Sarcoma Viral Oncogene Homolog; Transforming Protein P21; GTPase HRas; P21ras; Ras Family Small GTP Binding Protein H-Ras; Harvey Rat Sarcoma Viral Oncoprotein; Transformation Gene: Oncogene HAMSV; GTP- And GDP-Binding Peptide B; Ha-Ras1 Proto-Oncoprotein; C-Has/Bas P21 Protein; P19 H-RasIDX Protein; EC 3.6.5.2; C-BAS/HAS; C-HA-RAS1; H-RASIDX; C-H-RAS; H-Ras-1; C-H-Ras; Ha-Ras; HAMSV; RASH1; CTLO

Background

Gene Name: HRAS

NCBI Gene Entry: [3265](#)

Storage

Store at liquid nitrogen for 1 year.

Kit Components

1. Human HRAS Knockdown Cell Line (Wb-Validated)
2. Wild-type cell line

Parental Cell Line

Human cell line supplied by the client

Validation Methods

RT-qPCR, Western blotting (WB)

Shipping

Shipped on Dry Ice.

Instructions For Use

This knockdown cell line should be paired with wild-type cell line for use.

Note: This product is for research use only.

Validation Data

SUPPORT

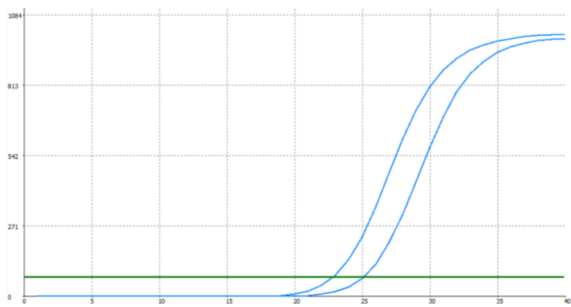
SUPPORT@GENUINBIOTECH.COM
TEL: +1-540-855-7041

ORDERS

SALES@GENUINBIOTECH.COM
FAX: +1-540-855-7041

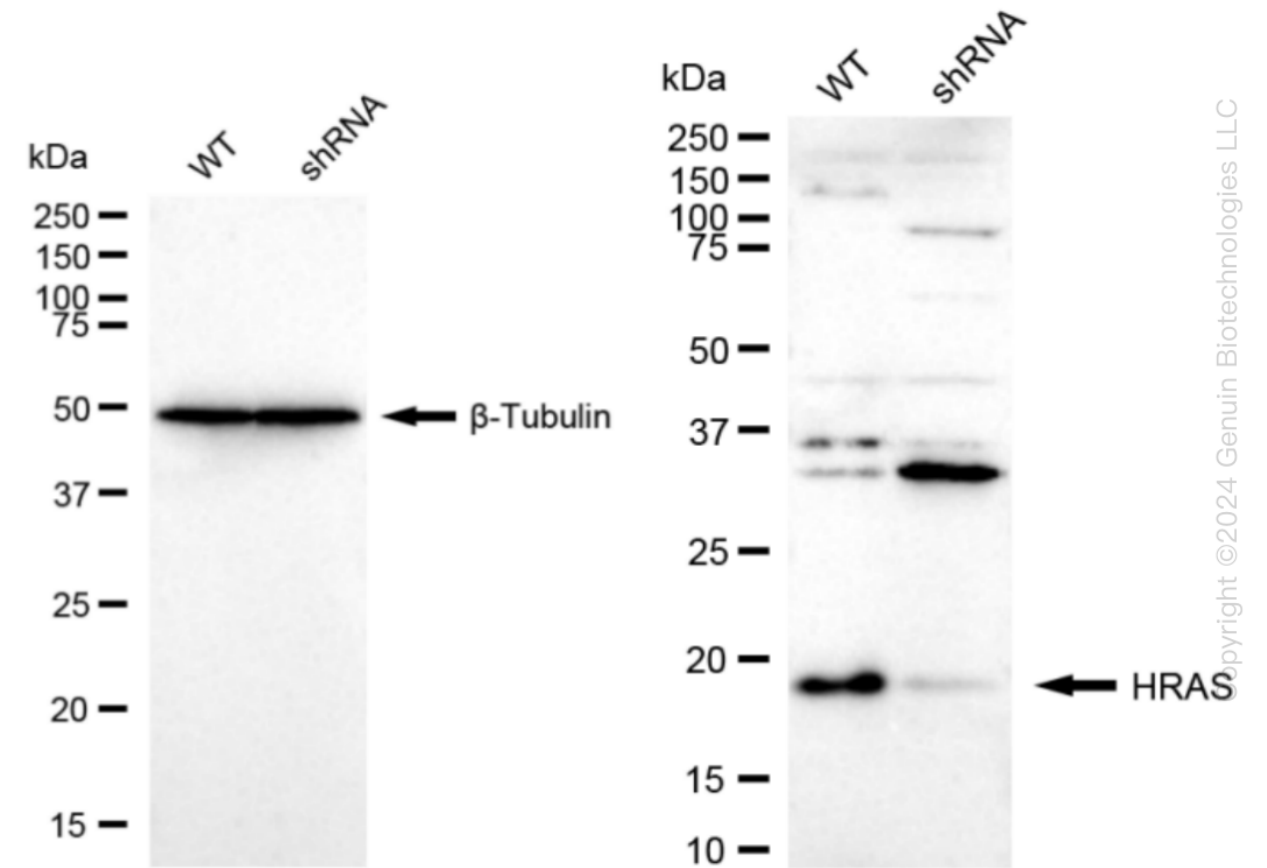
WWW.GENUINBIOTECH.COM

Human HRAS Knockdown Cell Line (WB-Validated)



Genotype	Ct Value
Wild-Type	22.80
Knock-Down	25.02
$\Delta Ct (Ct_{KD}-Ct_{WT})$	2.22
% mRNA Reduction	↓ 79%

RT-qPCR analysis. HeLa cells were infected with HRAS-specific shRNA lentiviral particles, total RNA was extracted from wild-type and knockdown cells, RT-qPCR was performed using gene-specific primers. $\Delta Ct (Ct_{KD}-Ct_{WT})$ was used to calculate mRNA reduction (%) between wild-type and knockdown cells using the following formula: $(1-1/2^{\Delta Ct}) \times 100\%$.



Western blotting analysis. HRAS protein expression in wild-type (WT) and shRNA knockdown (KD) HeLa cells was detected using Western blotting. β -Tubulin served as a loading control. The blots were incubated with primary antibodies (Cat#62107, 1:5,000) against HRAS and β -Tubulin, respectively, followed by incubating with HRP-conjugated goat anti-rabbit secondary antibody (Cat#201, 1:20,000). Images were developed using FeQ™ ECL Substrate Kit (Cat#226).

SUPPORT

SUPPORT@GENUINBIOTECH.COM
TEL: +1-540-855-7041

ORDERS

SALES@GENUINBIOTECH.COM
FAX: +1-540-855-7041

WWW.GENUINBIOTECH.COM