

Human HIF1AN Knockdown Cell Line (WB-Validated)



Catalog #: C62181

Aliases

HIF1AN; Hypoxia Inducible Factor 1 Subunit Alpha Inhibitor; FIH1; Hypoxia-Inducible Factor Asparagine Hydroxylase; Hypoxia-Inducible Factor 1-Alpha Inhibitor; Peptide-Aspartate Beta-Dioxygenase; Factor Inhibiting HIF-1; DKFZp762F1811; FLJ20615; FLJ22027; FIH-1; Hypoxia Inducible Factor 1 Alpha Subunit Inhibitor; Factor Inhibiting HIF1; EC 1.14.11.30; EC 1.14.11.N4

Background

Gene Name: HIF1AN

NCBI Gene Entry: [55662](#)

Storage

Store at liquid nitrogen for 1 year.

Kit Components

1. Human HIF1AN Knockdown Cell Line (Wb-Validated)
2. Wild-type cell line

Parental Cell Line

Human cell line supplied by the client

Validation Methods

RT-qPCR, Western blotting (WB)

Shipping

Shipped on Dry Ice.

Instructions For Use

This knockdown cell line should be paired with wild-type cell line for use.

Note: This product is for research use only.

Validation Data

SUPPORT

SUPPORT@GENUINBIOTECH.COM
TEL: +1-540-855-7041

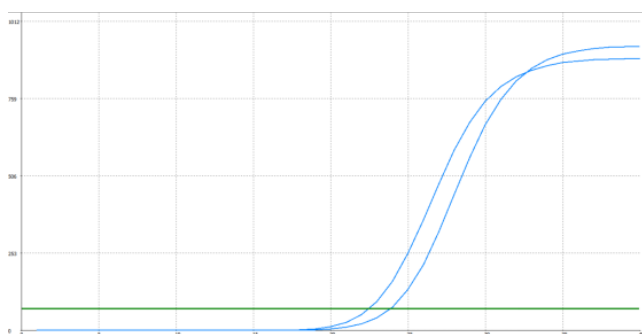
ORDERS

SALES@GENUINBIOTECH.COM
FAX: +1-540-855-7041

WWW.GENUINBIOTECH.COM

Human HIF1AN Knockdown Cell Line (WB-Validated)

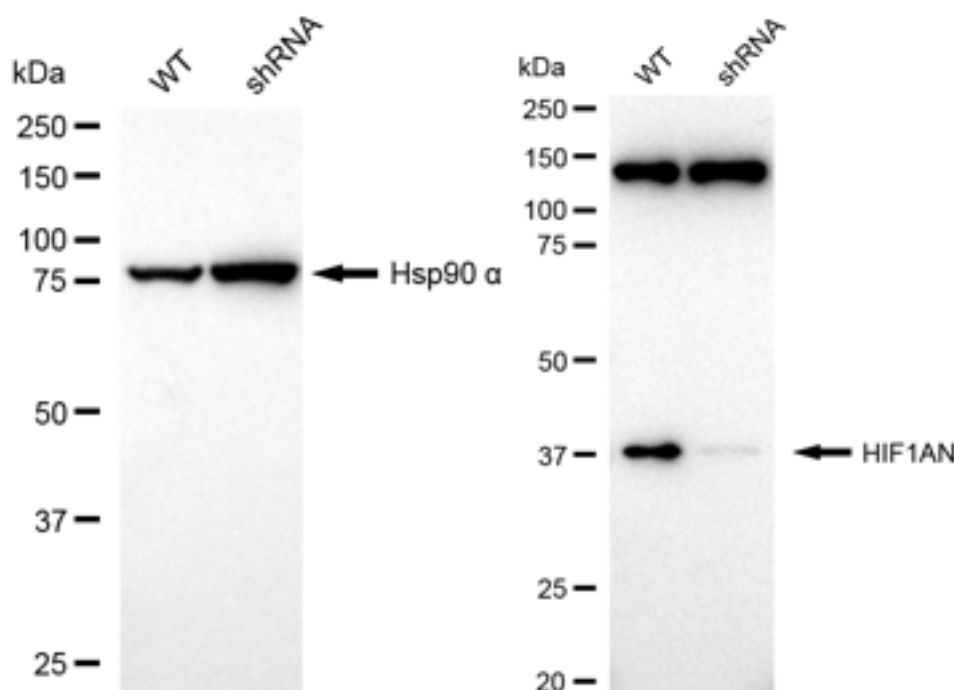
PAGE 2



Genotype	Ct Value
Wild-Type	22.26
Knock-Down	23.71
Δ Ct (CtKD-CtWT)	1.45
% mRNA Reduction	63%

Copyright ©2025 Genuin Biotechnologies LLC

RT-qPCR analysis. HeLa cells were infected with HIF1AN-specific shRNA lentiviral particles, total RNA was extracted from wild-type and knockdown cells, RT-qPCR was performed using gene-specific primers. Δ Ct (CtKD-CtWT) was used to calculate mRNA reduction (%) between wild-type and knockdown cells using the following formula: $(1 - 1/2^{\Delta\text{Ct}}) \times 100\%$.



Copyright ©2025 Genuin Biotechnologies LLC

Western blotting analysis. HIF1AN protein expression in wild-type (WT) and shRNA knockdown (KD) HeLa cells was detected using Western blotting. Hsp90 α served as a loading control. The blots were incubated with primary antibodies against HIF1AN and Hsp90 α , respectively, followed by incubating with HRP-conjugated goat anti-rabbit secondary antibody. Images were developed using FeQ™ ECL Substrate Kit.

SUPPORT

SUPPORT@GENUINBIOTECH.COM
TEL: +1-540-855-7041

ORDERS

SALES@GENUINBIOTECH.COM
FAX: +1-540-855-7041

WWW.GENUINBIOTECH.COM