

Human ISG15 Knockdown Cell Line (WB-Validated)



Catalog #: C62197

Aliases

ISG15; ISG15 Ubiquitin Like Modifier; UCRP; IFI15; G1P2; Interferon, Alpha-Inducible Protein (Clone IFI-15K); Ubiquitin Cross-Reactive Protein; Ubiquitin-Like Protein ISG15; HUCRP; IP17; Interferon-Induced 17-KDa/15-KDa Protein; Interferon-Stimulated Protein, 15 KDa; Interferon-Induced 15 KDa Protein; Interferon-Induced 17 KDa Protein; IMD38

Background

Gene Name: ISG15

NCBI Gene Entry: [9636](#)

Storage

Store at liquid nitrogen for 1 year.

Kit Components

1. Human ISG15 Knockdown Cell Line (Wb-Validated)
2. Wild-type cell line

Parental Cell Line

Human cell line supplied by the client

Validation Methods

RT-qPCR, Western blotting (WB)

Shipping

Shipped on Dry Ice.

Instructions For Use

This knockdown cell line should be paired with wild-type cell line for use.

Note: This product is for research use only.

Validation Data

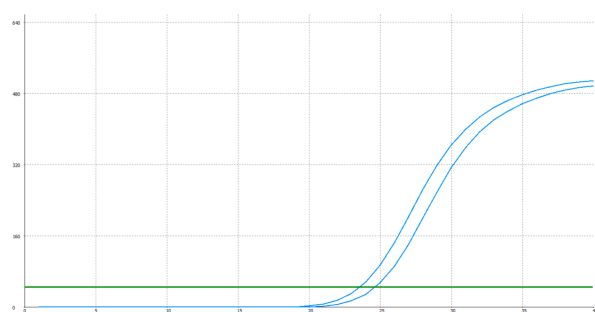
SUPPORT

SUPPORT@GENUINBIOTECH.COM
TEL: +1-540-855-7041

ORDERS

SALES@GENUINBIOTECH.COM
FAX: +1-540-855-7041

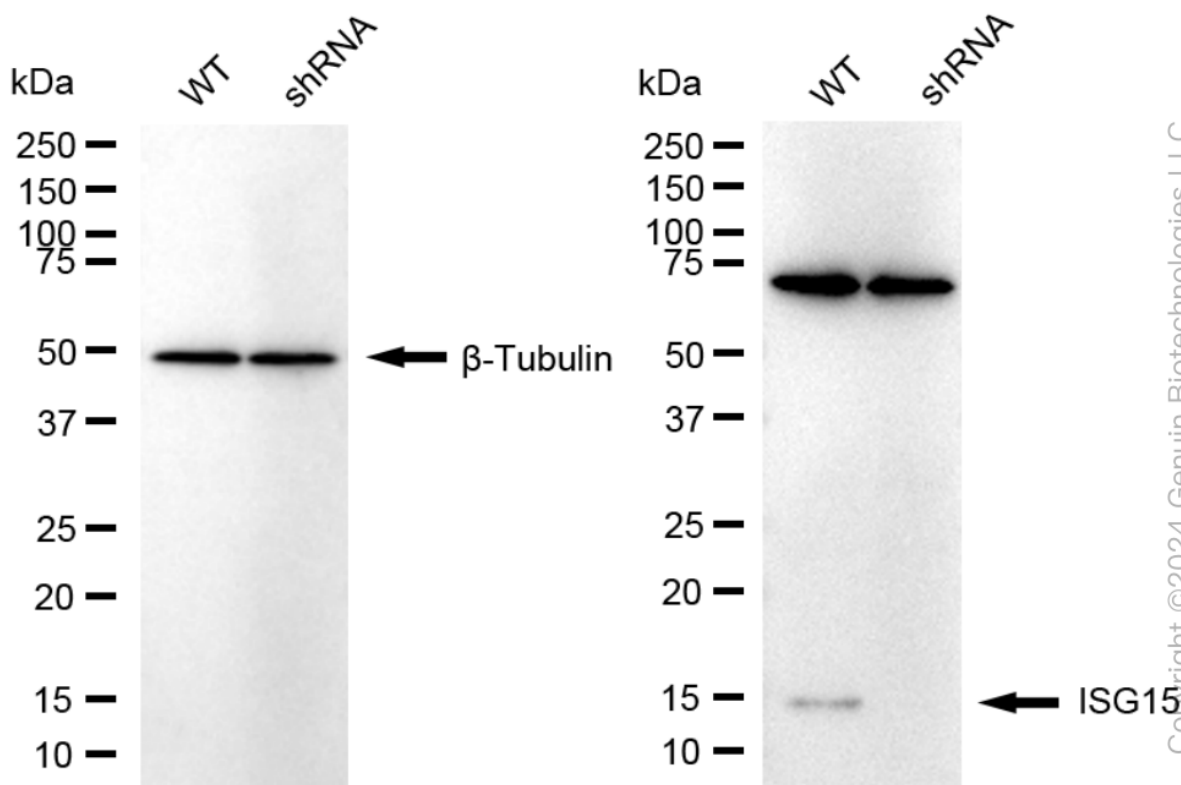
WWW.GENUINBIOTECH.COM



Genotype	Ct Value
Wild-Type	23.20
Knock-Down	24.23
$\Delta Ct (Ct_{KD} - Ct_{WT})$	1.03
% mRNA Reduction	↓ 51%

Copyright ©2025 Genuin Biotechnologies LLC

RT-qPCR analysis. HepG2 cells were infected with ISG15-specific shRNA lentiviral particles, total RNA was extracted from wild-type and knockdown cells, RT-qPCR was performed using gene-specific primers. $\Delta Ct (Ct_{KD} - Ct_{WT})$ was used to calculate mRNA reduction (%) between wild-type and knockdown cells using the following formula: $(1 - 1/2^{\Delta Ct}) \times 100\%$.



Copyright ©2024 Genuin Biotechnologies LLC

Western blotting analysis. ISG15 protein expression in wild-type (WT) and shRNA knockdown (KD) HepG2 cells was detected using Western blotting. β -Tubulin served as a loading control. The blots were incubated with primary antibodies against ISG15 and β -Tubulin, respectively, followed by incubating with HRP-conjugated goat anti-rabbit secondary antibody. Images were developed using FeQ™ ECL Substrate Kit.