

# Human E2F1 Knockdown Cell Line (WB-Validated)



**Catalog #: C62221**

## Aliases

E2F1; E2F Transcription Factor 1; RBBP3; RBP3; Retinoblastoma-Binding Protein 3 (E2F-Like); Retinoblastoma-Associated Protein 1; Retinoblastoma-Binding Protein 3; Transcription Factor E2F1; PRB-Binding Protein E2F-1; RBAP-1; RBBP-3; E2F-1; PBR3; RBAP1

## Background

Gene Name: E2F1

NCBI Gene Entry: [1869](#)

## Storage

Store at liquid nitrogen for 1 year.

## Kit Components

1. Human E2F1 Knockdown Cell Line (Wb-Validated)
2. Wild-type cell line

## Parental Cell Line

Human cell line supplied by the client

## Validation Methods

RT-qPCR, Western blotting (WB)

## Shipping

Shipped on Dry Ice.

## Instructions For Use

This knockdown cell line should be paired with wild-type cell line for use.

**Note:** This product is for research use only.

## Validation Data

---

### SUPPORT

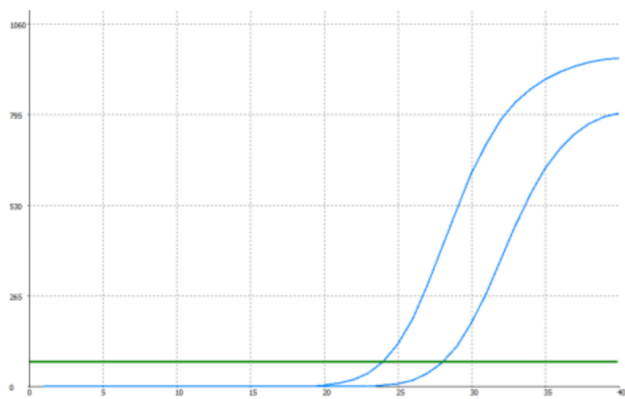
SUPPORT@GENUINBIOTECH.COM  
TEL: +1-540-855-7041

### ORDERS

SALES@GENUINBIOTECH.COM  
FAX: +1-540-855-7041

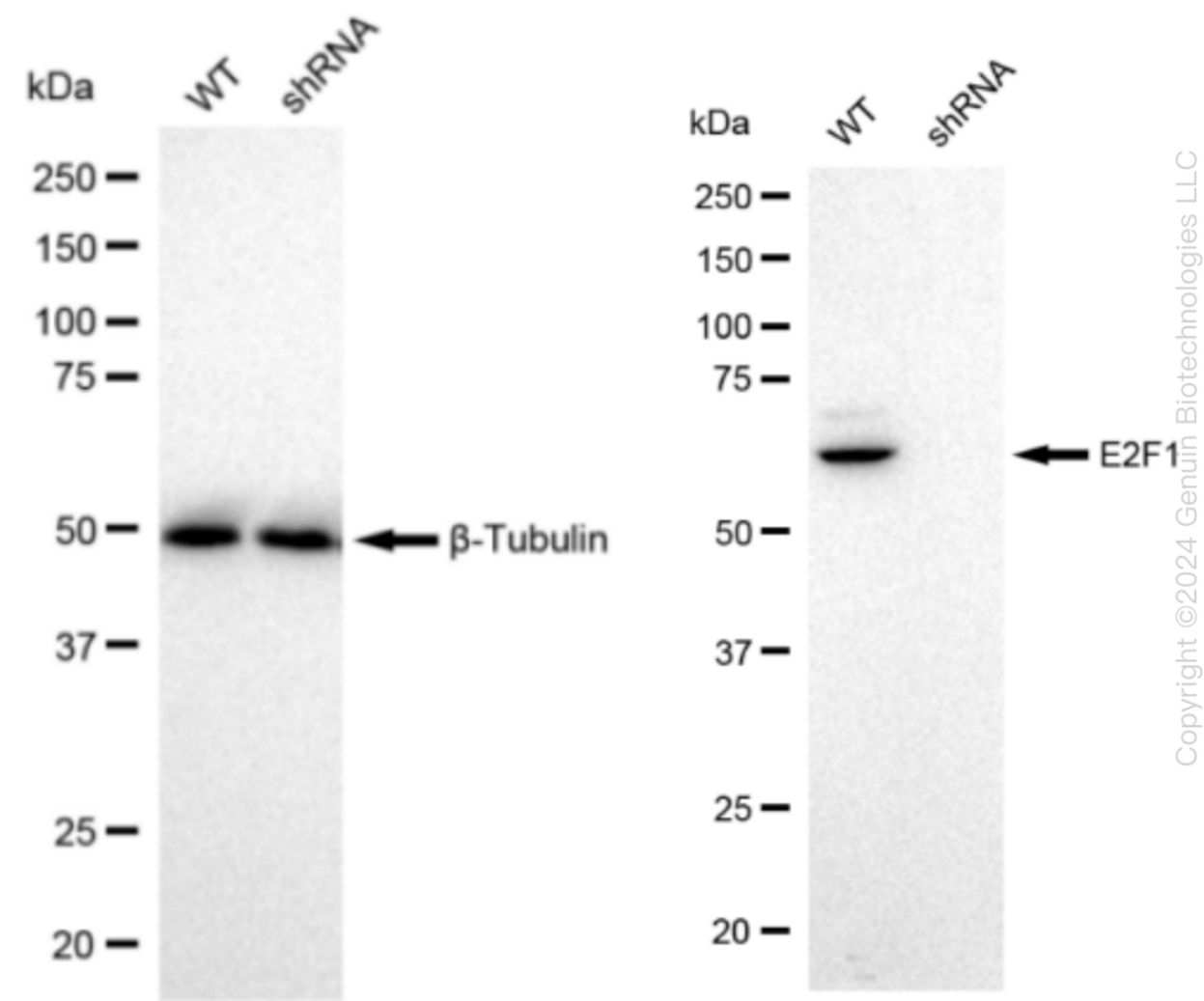
[WWW.GENUINBIOTECH.COM](http://WWW.GENUINBIOTECH.COM)

Human E2F1 Knockdown Cell Line (WB-Validated)



Genotype	Ct Value
Wild-Type	23.8
Knock-Down	27.1
$\Delta Ct (Ct_{KD}-Ct_{WT})$	3.7
% mRNA Reduction	↓ 93%

RT-qPCR analysis. HeLa cells were infected with E2F1-specific shRNA lentiviral particles, total RNA was extracted from wild-type and knockdown cells, RT-qPCR was performed using gene-specific primers.  $\Delta Ct (Ct_{KD}-Ct_{WT})$  was used to calculate mRNA reduction (%) between wild-type and knockdown cells using the following formula:  $(1-1/2^{\Delta Ct}) \times 100\%$ .



Western blotting analysis. E2F1 protein expression in wild-type (WT) and shRNA knockdown

SUPPORT

SUPPORT@GENUINBIOTECH.COM  
TEL: +1-540-855-7041

ORDERS

SALES@GENUINBIOTECH.COM  
FAX: +1-540-855-7041

WWW.GENUINBIOTECH.COM

## Human E2F1 Knockdown Cell Line (WB-Validated)

PAGE 3

(KD) HeLa cells was detected using Western blotting.  $\beta$ -Tubulin served as a loading control. The blots were incubated with primary antibodies (Cat#62221, 1:5,000) against E2F1 and  $\beta$ -Tubulin, respectively, followed by incubating with HRP-conjugated goat anti-rabbit secondary antibody (Cat#201, 1:20,000). Images were developed using FeQ™ ECL Substrate Kit (Cat#226).

---

### SUPPORT

SUPPORT@GENUINBIOTECH.COM  
TEL: +1-540-855-7041

### ORDERS

SALES@GENUINBIOTECH.COM  
FAX: +1-540-855-7041

[WWW.GENUINBIOTECH.COM](http://WWW.GENUINBIOTECH.COM)