

# Human DEGS1 Knockdown Cell Line (WB-Validated)



**Catalog #: C62231**

## Aliases

DEGS1; Delta 4-Desaturase, Sphingolipid 1; DES1; MLD; DEGS-1; Des-1; FADS7; Cell Migration-Inducing Gene 15 Protein; Sphingolipid Delta(4)-Desaturase DES1; Sphingolipid Delta(4)-Desaturase 1; Dihydroceramide Desaturase 1; Membrane Lipid Desaturase; Retinol Isomerase; Degenerative Spermatocyte Homolog 1, Lipid Desaturase (Drosophila); Degenerative Spermatocyte Homolog 1, Lipid Desaturase; Degenerative Spermatocyte Homolog, Lipid Desaturase; Membrane Fatty Acid (Lipid) Desaturase; Degenerative Spermatocyte Homolog 1; Migration-Inducing Gene 15 Protein; Sphingolipid Delta 4 Desaturase; Dihydroceramide Desaturase-1; EC 1.14.19.17; EC 5.2.1.-; HLD18; MIG15; DEGS

## Background

Gene Name: DEGS1  
NCBI Gene Entry: [8560](#)

## Storage

Store at liquid nitrogen for 1 year.

## Kit Components

1. Human DEGS1 Knockdown Cell Line (Wb-Validated)
2. Wild-type cell line

## Parental Cell Line

Human cell line supplied by the client

## Validation Methods

RT-qPCR, Western blotting (WB)

## Shipping

Shipped on Dry Ice.

## Instructions For Use

This knockdown cell line should be paired with wild-type cell line for use.

**Note:** This product is for research use only.

## Validation Data

---

### SUPPORT

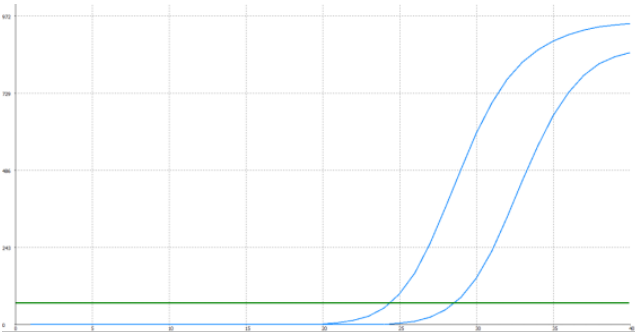
SUPPORT@GENUINBIOTECH.COM  
TEL: +1-540-855-7041

### ORDERS

SALES@GENUINBIOTECH.COM  
FAX: +1-540-855-7041

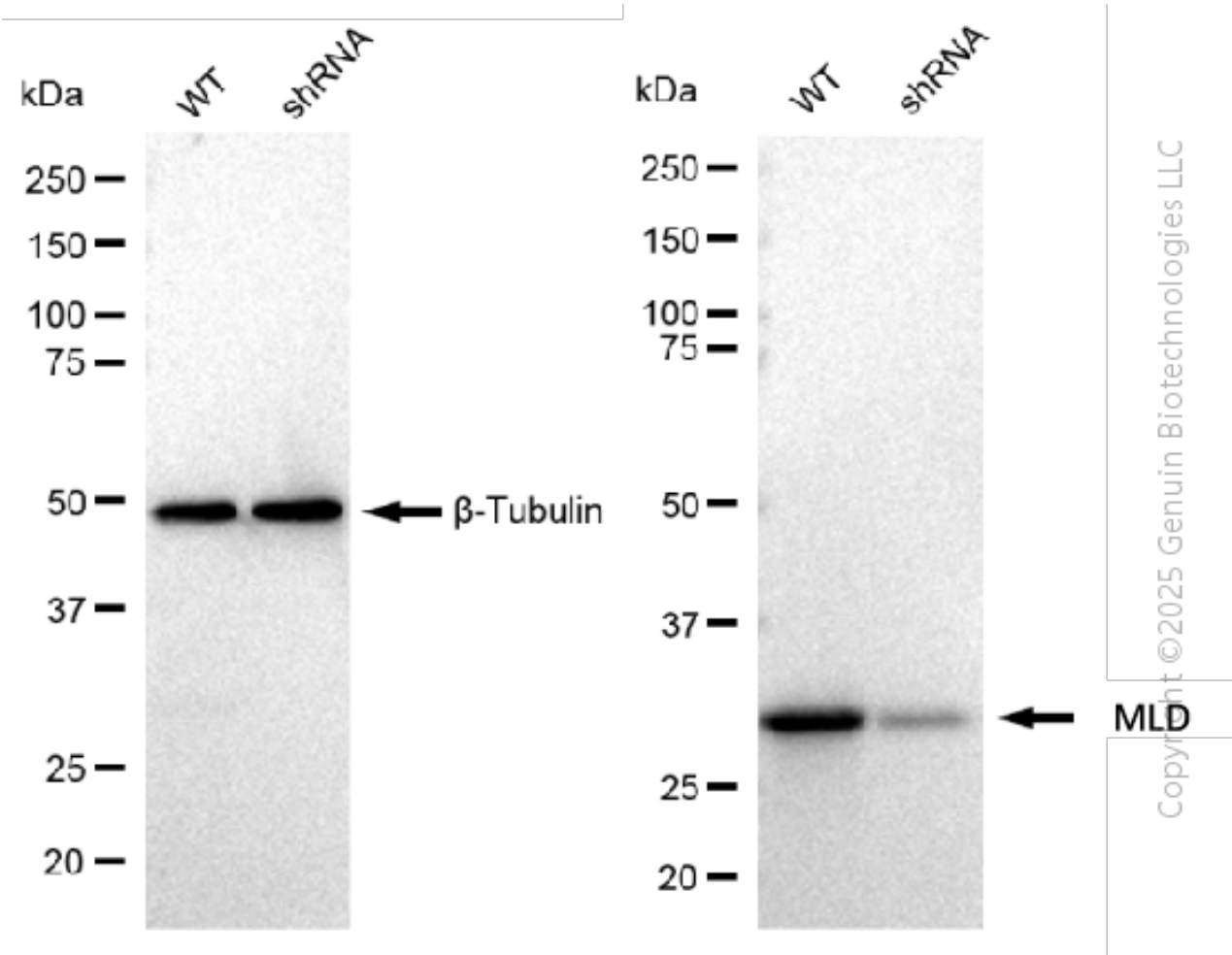
[WWW.GENUINBIOTECH.COM](http://WWW.GENUINBIOTECH.COM)

Human DEGS1 Knockdown Cell Line (WB-Validated)



Genotype	Ct Value
Wild-Type	24.33
Knock-Down	28.37
$\Delta$ Ct (CtKD-CtWT)	4.04
% mRNA Reduction	94%

RT-qPCR analysis. HT-1080 cells were infected with DEGS1-specific shRNA lentiviral particles, total RNA was extracted from wild-type and knockdown cells, RT-qPCR was performed using gene-specific primers.  $\Delta$ Ct (CtKD-CtWT) was used to calculate mRNA reduction (%) between wild-type and knockdown cells using the following formula:  $(1-1/2^{\Delta\text{Ct}}) \times 100\%$ .



Western blotting analysis. DEGS1 protein expression in wild-type (WT) and shRNA knockdown (KD) HT-1080 cells was detected using Western blotting.  $\beta$ -Tubulin served as a loading control. The blots were incubated with primary antibodies against DEGS1 and  $\beta$ -Tubulin, respectively, followed by incubating with HRP-conjugated goat anti-rabbit secondary antibody. Images were

SUPPORT

SUPPORT@GENUINBIOTECH.COM  
TEL: +1-540-855-7041

ORDERS

SALES@GENUINBIOTECH.COM  
FAX: +1-540-855-7041

WWW.GENUINBIOTECH.COM

## **Human DEGS1 Knockdown Cell Line (WB-Validated)**

PAGE 3

developed using FeQ™ ECL Substrate Kit.

---

### **SUPPORT**

SUPPORT@GENUINBIOTECH.COM  
TEL: +1-540-855-7041

### **ORDERS**

SALES@GENUINBIOTECH.COM  
FAX:+1-540-855-7041

**WWW.GENUINBIOTECH.COM**