

Human IL13RA1 Knockdown Cell Line (WB-Validated)



Catalog #: C62240

Aliases

IL13RA1; Interleukin 13 Receptor Subunit Alpha 1; CD213a1 Antigen; IL-13Ra; CD213a1; NR4; Interleukin-13 Receptor Subunit Alpha-1; Interleukin 13 Receptor, Alpha 1; IL-13 Receptor Subunit Alpha-1; IL13 Receptor Alpha-1 Chain; Cancer/Testis Antigen 19; IL-13R Subunit Alpha-1; CT19; IL-13R-Alpha-1; IL-13RA1; IL13RA; IL13R

Background

Gene Name: IL13RA1

NCBI Gene Entry: [3597](#)

Storage

Store at liquid nitrogen for 1 year.

Kit Components

1. Human IL13RA1 Knockdown Cell Line (Wb-Validated)
2. Wild-type cell line

Parental Cell Line

Human cell line supplied by the client

Validation Methods

RT-qPCR, Western blotting (WB)

Shipping

Shipped on Dry Ice.

Instructions For Use

This knockdown cell line should be paired with wild-type cell line for use.

Note: This product is for research use only.

Validation Data

SUPPORT

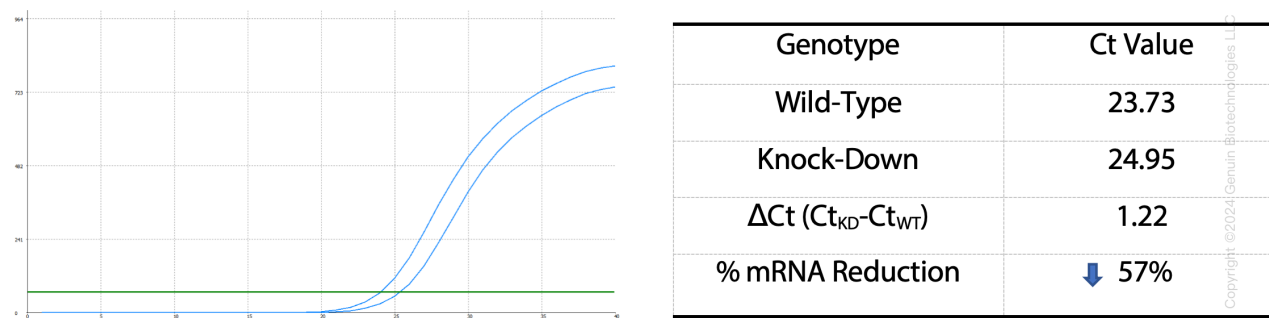
SUPPORT@GENUINBIOTECH.COM
TEL: +1-540-855-7041

ORDERS

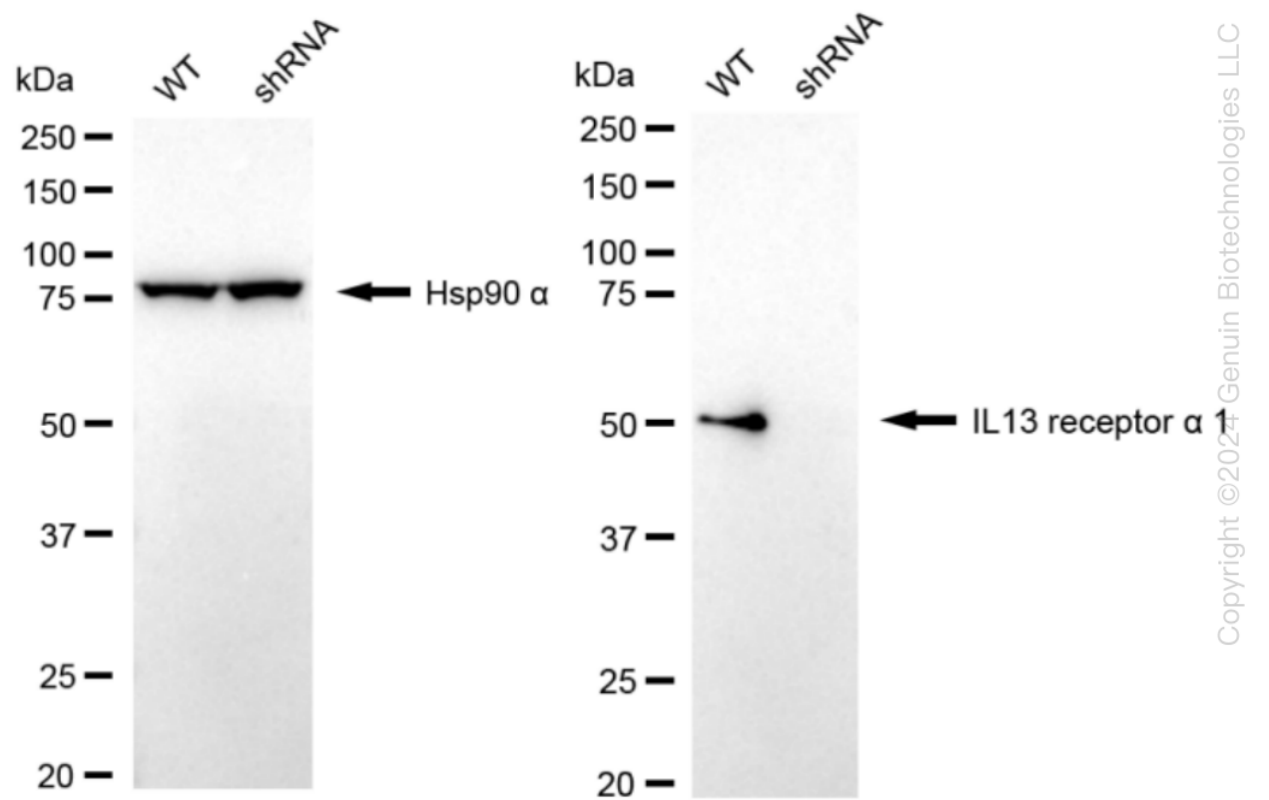
SALES@GENUINBIOTECH.COM
FAX: +1-540-855-7041

WWW.GENUINBIOTECH.COM

Human IL13RA1 Knockdown Cell Line (WB-Validated)



RT-qPCR analysis. HeLa cells were infected with IL13RA1-specific shRNA lentiviral particles, total RNA was extracted from wild-type and knockdown cells, RT-qPCR was performed using gene-specific primers. $\Delta Ct (Ct_{KD}-Ct_{WT})$ was used to calculate mRNA reduction (%) between wild-type and knockdown cells using the following formula: $(1-1/2^{\Delta Ct}) \times 100\%$.



Western blotting analysis. IL13RA1 protein expression in wild-type (WT) and shRNA knockdown (KD) HeLa cells was detected using Western blotting. Hsp90 α served as a loading control. The blots were incubated with primary antibodies (Cat#62240, 1:5,000) against IL13RA1 and Hsp90 α , respectively, followed by incubating with HRP-conjugated goat anti-rabbit secondary antibody (Cat#201, 1:20,000). Images were developed using FeQ™ ECL Substrate Kit (Cat#226).

SUPPORT

SUPPORT@GENUINBIOTECH.COM
TEL: +1-540-855-7041

ORDERS

SALES@GENUINBIOTECH.COM
FAX: +1-540-855-7041

WWW.GENUINBIOTECH.COM