

Human GOT2 Knockdown Cell Line (WB-Validated)



Catalog #: C62249

Aliases

GOT2; Glutamic-Oxaloacetic Transaminase 2; KYAT4; Kynurenine Aminotransferase IV; MAspAT; KATIV; KAT4; Plasma Membrane-Associated Fatty Acid-Binding Protein; Glutamic-Oxaloacetic Transaminase 2, Mitochondrial; Aspartate Aminotransferase, Mitochondrial; Kynurenine--OxoglutaRate Transaminase IV; Kynurenine--OxoglutaRate Transaminase 4; Glutamate Oxaloacetate Transaminase 2; Kynurenine Aminotransferase 4; Aspartate Aminotransferase 2; Fatty Acid-Binding Protein; Aspartate Transaminase 2; Transaminase A; EC 2.6.1.1; MitAAT; FABP-1; FABPpm; Glutamic-Oxaloacetic Transaminase 2, Mitochondrial (Aspartate Aminotransferase 2); EC 2.6.1.7; EC 2.6.1; MITAAT; DEE82

Background

Gene Name: GOT2

NCBI Gene Entry: [2806](#)

Storage

Store at liquid nitrogen for 1 year.

Kit Components

1. Human GOT2 Knockdown Cell Line (Wb-Validated)
2. Wild-type cell line

Parental Cell Line

Human cell line supplied by the client

Validation Methods

RT-qPCR, Western blotting (WB)

Shipping

Shipped on Dry Ice.

Instructions For Use

This knockdown cell line should be paired with wild-type cell line for use.

Note: This product is for research use only.

Validation Data

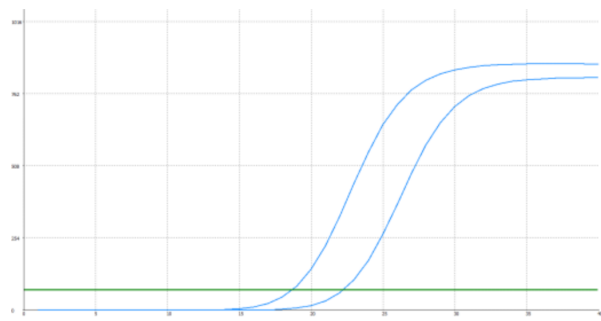
SUPPORT

SUPPORT@GENUINBIOTECH.COM
TEL: +1-540-855-7041

ORDERS

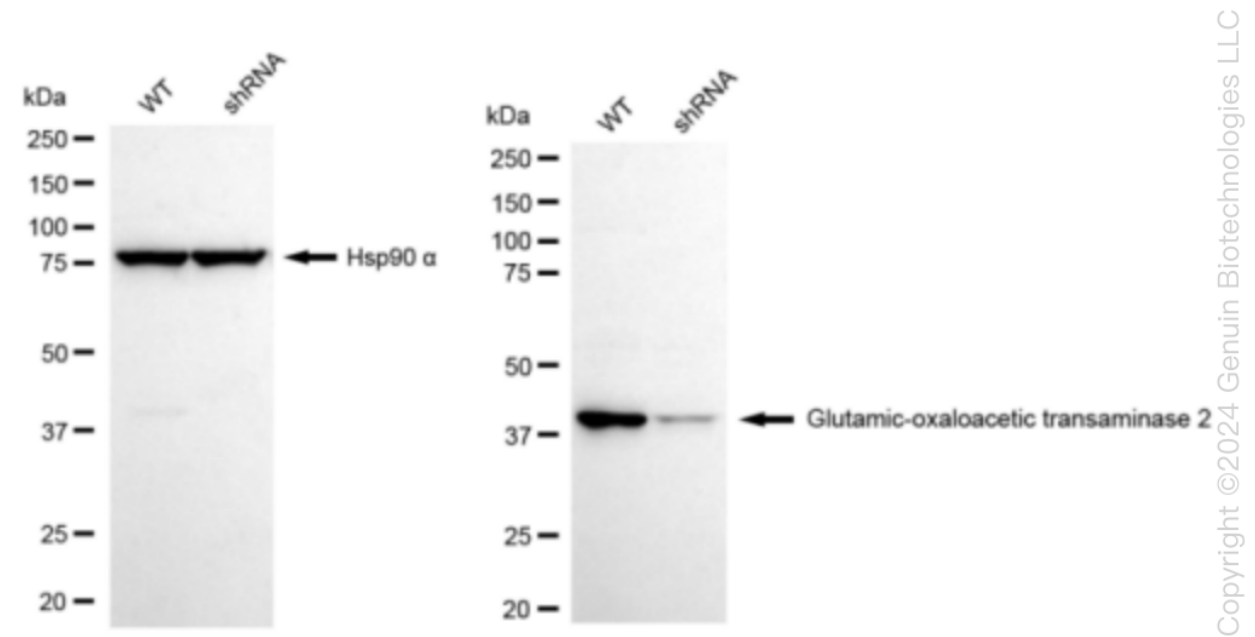
SALES@GENUINBIOTECH.COM
FAX: +1-540-855-7041

WWW.GENUINBIOTECH.COM



| Genotype | Ct Value |
|-------------------------------|----------|
| Wild-Type | 18.42 |
| Knock-Down | 21.91 |
| $\Delta Ct (Ct_{KD}-Ct_{WT})$ | 3.49 |
| % mRNA Reduction | ↓ 91% |

RT-qPCR analysis. HeLa cells were infected with GOT2-specific shRNA lentiviral particles, total RNA was extracted from wild-type and knockdown cells, RT-qPCR was performed using gene-specific primers. $\Delta Ct (Ct_{KD}-Ct_{WT})$ was used to calculate mRNA reduction (%) between wild-type and knockdown cells using the following formula: $(1-1/2^{\Delta Ct}) \times 100\%$.



Western blotting analysis. GOT2 protein expression in wild-type (WT) and shRNA knockdown (KD) HeLa cells was detected using Western blotting. Hsp90 α served as a loading control. The blots were incubated with primary antibodies (Cat#62249, 1:5,000) against GOT2 and Hsp90 α , respectively, followed by incubating with HRP-conjugated goat anti-rabbit secondary antibody (Cat#201, 1:20,000). Images were developed using FeQ™ ECL Substrate Kit (Cat#226).