

# Human FDPS Knockdown Cell Line (WB-Validated)



**Catalog #: C62267**

## Aliases

FDPS; Farnesyl Diphosphate Synthase; Farnesyl Pyrophosphate Synthetase, Dimethylallyltranstransferase, Geranyltranstransferase; (2E,6E)-Farnesyl Diphosphate Synthase; Farnesyl Pyrophosphate Synthase; FPP Synthase; FPS; Dimethylallyltranstransferase; Geranyltranstransferase; FPP Synthetase; EC 2.5.1.10; EC 2.5.1.1; KIAA1293; POROK9; FPPS

## Background

Gene Name: FDPS

NCBI Gene Entry: [2224](#)

## Storage

Store at liquid nitrogen for 1 year.

## Kit Components

1. Human FDPS Knockdown Cell Line (Wb-Validated)
2. Wild-type cell line

## Parental Cell Line

Human cell line supplied by the client

## Validation Methods

RT-qPCR, Western blotting (WB)

## Shipping

Shipped on Dry Ice.

## Instructions For Use

This knockdown cell line should be paired with wild-type cell line for use.

**Note:** This product is for research use only.

## Validation Data

---

### SUPPORT

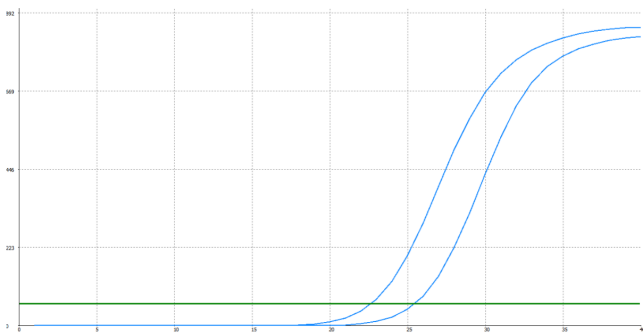
SUPPORT@GENUINBIOTECH.COM  
TEL: +1-540-855-7041

### ORDERS

SALES@GENUINBIOTECH.COM  
FAX: +1-540-855-7041

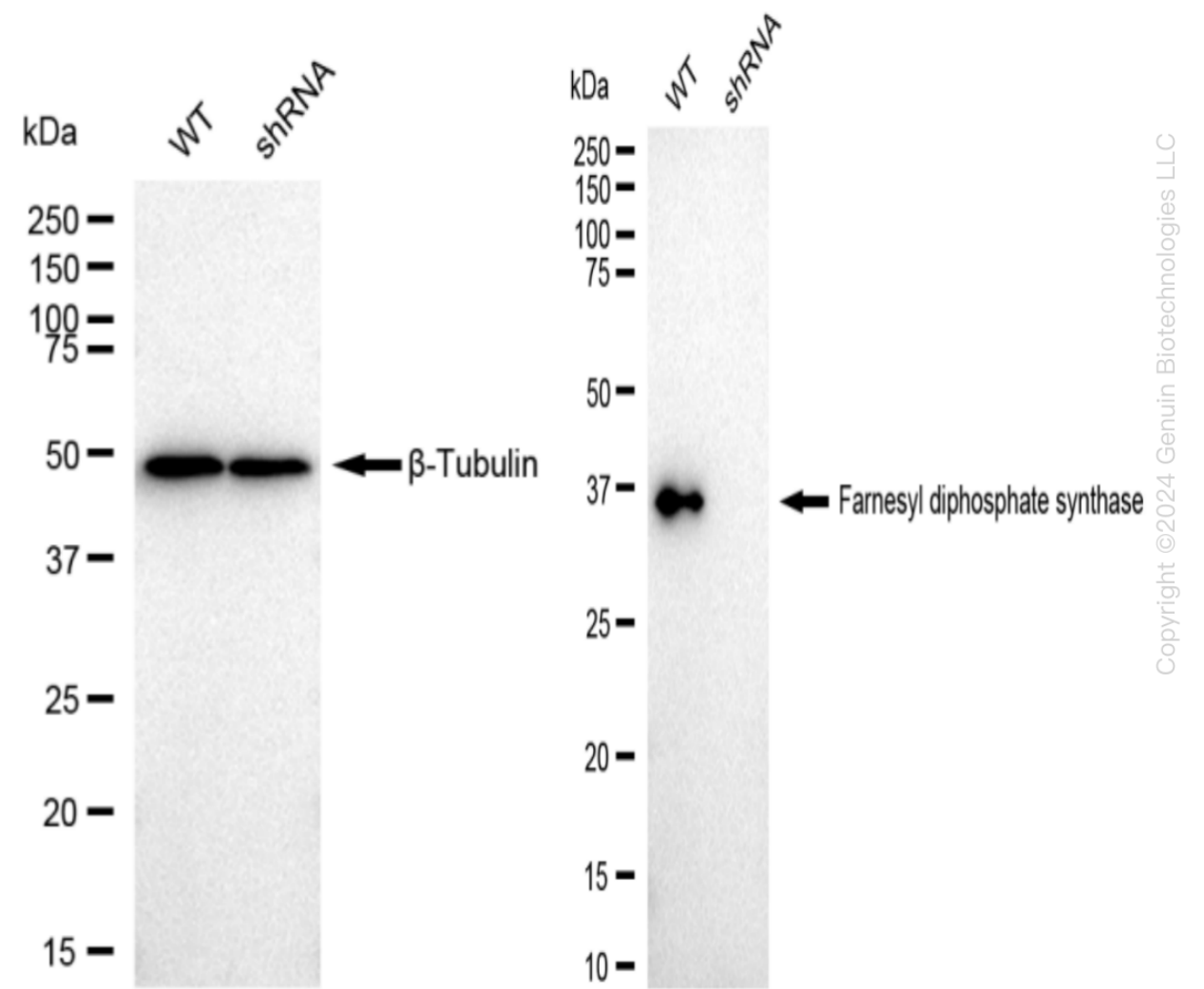
[WWW.GENUINBIOTECH.COM](http://WWW.GENUINBIOTECH.COM)

Human FDPS Knockdown Cell Line (WB-Validated)



Genotype	Ct Value
Wild-Type	22.59
Knock-Down	25.32
$\Delta Ct$ ( $Ct_{KD}-Ct_{WT}$ )	2.73
% mRNA Reduction	↓ 85%

RT-qPCR analysis. HeLa cells were infected with FDPS-specific shRNA lentiviral particles, total RNA was extracted from wild-type and knockdown cells, RT-qPCR was performed using gene-specific primers.  $\Delta Ct$  ( $Ct_{KD}-Ct_{WT}$ ) was used to calculate mRNA reduction (%) between wild-type and knockdown cells using the following formula:  $(1-1/2^{\Delta Ct}) \times 100\%$ .



SUPPORT

SUPPORT@GENUINBIOTECH.COM  
TEL: +1-540-855-7041

ORDERS

SALES@GENUINBIOTECH.COM  
FAX: +1-540-855-7041

WWW.GENUINBIOTECH.COM

Western blotting analysis. FDPS protein expression in wild-type (WT) and shRNA knockdown (KD) HeLa cells was detected using Western blotting.  $\beta$ -Tubulin served as a loading control. The blots were incubated with primary antibodies (Cat#62267, 1:5,000) against FDPS and  $\beta$ -Tubulin, respectively, followed by incubating with HRP-conjugated goat anti-rabbit secondary antibody (Cat#201, 1:20,000). Images were developed using FeQ™ ECL Substrate Kit (Cat#226).