

Human MAP3K2 Knockdown Cell Line (WB-Validated)



Catalog #: C62312

Aliases

MAP3K2; Mitogen-Activated Protein Kinase Kinase Kinase 2; MEKK2B; MEKK2; MAPK/ERK Kinase Kinase 2; MAP/ERK Kinase Kinase 2; MEK Kinase 2; MEKK 2; EC 2.7.11.25; MAPKKK2

Background

Gene Name: MAP3K2

NCBI Gene Entry: [10746](#)

Storage

Store at liquid nitrogen for 1 year.

Kit Components

1. Human MAP3K2 Knockdown Cell Line (Wb-Validated)
2. Wild-type cell line

Parental Cell Line

Human cell line supplied by the client

Validation Methods

RT-qPCR, Western blotting (WB)

Shipping

Shipped on Dry Ice.

Instructions For Use

This knockdown cell line should be paired with wild-type cell line for use.

Note: This product is for research use only.

Validation Data

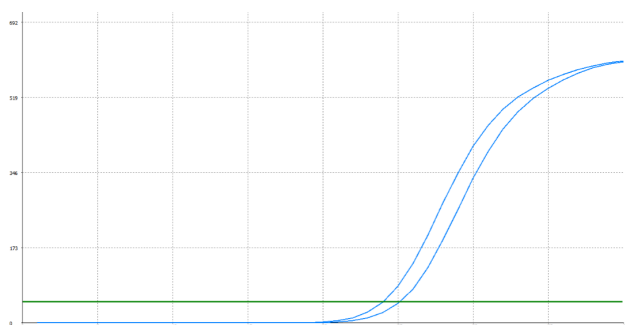
SUPPORT

SUPPORT@GENUINBIOTECH.COM
TEL: +1-540-855-7041

ORDERS

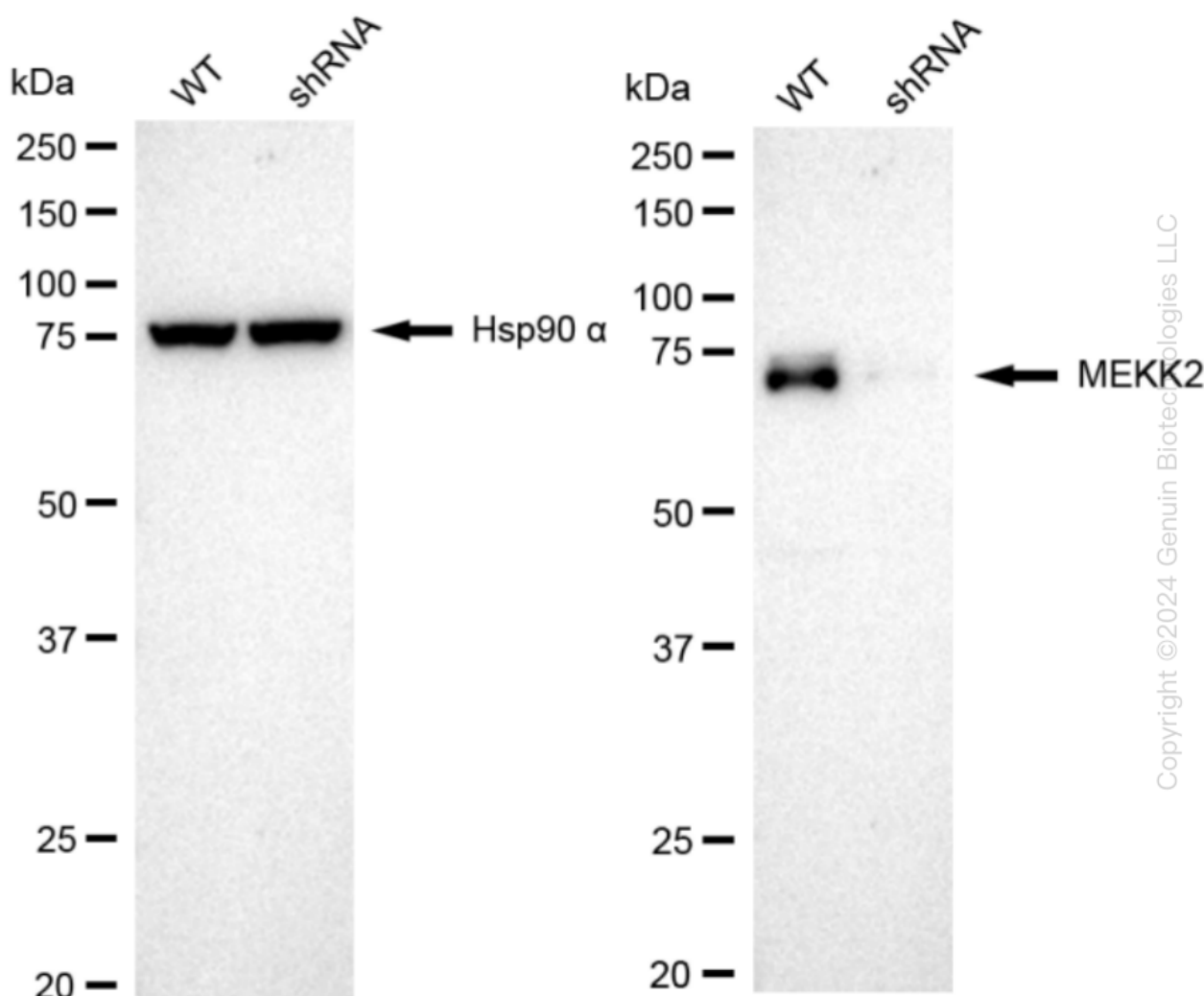
SALES@GENUINBIOTECH.COM
FAX: +1-540-855-7041

WWW.GENUINBIOTECH.COM



Genotype	Ct Value
Wild-Type	23.78
Knock-Down	24.91
ΔCt ($Ct_{KD} - Ct_{WT}$)	1.13
% mRNA Reduction	↓ 54%

RT-qPCR analysis. HT-1080 cells were infected with MAP3K2-specific shRNA lentiviral particles, total RNA was extracted from wild-type and knockdown cells, RT-qPCR was performed using gene-specific primers. ΔCt ($Ct_{KD} - Ct_{WT}$) was used to calculate mRNA reduction (%) between wild-type and knockdown cells using the following formula: $(1 - 1/2^{\Delta Ct}) \times 100\%$.



Western blotting analysis. MAP3K2 protein expression in wild-type (WT) and shRNA knockdown (KD) HT-1080 cells was detected using Western blotting. Hsp90 α served as a loading control. The blots were incubated with primary antibodies against MAP3K2 and Hsp90 α , respectively,

Human MAP3K2 Knockdown Cell Line (WB-Validated)

PAGE 3

followed by incubating with HRP-conjugated goat anti-rabbit secondary antibody. Images were developed using FeQ™ ECL Substrate Kit.

SUPPORT

SUPPORT@GENUINBIOTECH.COM
TEL: +1-540-855-7041

ORDERS

SALES@GENUINBIOTECH.COM
FAX: +1-540-855-7041

WWW.GENUINBIOTECH.COM