

Human MAPK10 Knockdown Cell Line (WB-Validated)



Catalog #: C62328

Aliases

Mitogen-Activated Protein Kinase 10; JNK3; P54bSAPK; P493F12; PRKM10; Stress-Activated Protein Kinase JNK3; Stress-Activated Protein Kinase 1b; C-Jun N-Terminal Kinase 3; MAP Kinase P49 3F12; MAP Kinase 10; EC 2.7.11.24; SAPK1b; JNK3A; Stress Activated Protein Kinase Beta; JNK3 Alpha Protein Kinase; EC 2.7.11; MAPK 10; SAPK1B

Background

Gene Name: MAPK10

NCBI Gene Entry: [5602](#)

Storage

Store at liquid nitrogen for 1 year.

Kit Components

1. Human MAPK10 Knockdown Cell Line (Wb-Validated)
2. Wild-type cell line

Parental Cell Line

Human cell line supplied by the client

Validation Methods

RT-qPCR, Western blotting (WB)

Shipping

Shipped on Dry Ice.

Instructions For Use

This knockdown cell line should be paired with wild-type cell line for use.

Note: This product is for research use only.

Validation Data

SUPPORT

SUPPORT@GENUINBIOTECH.COM
TEL: +1-540-855-7041

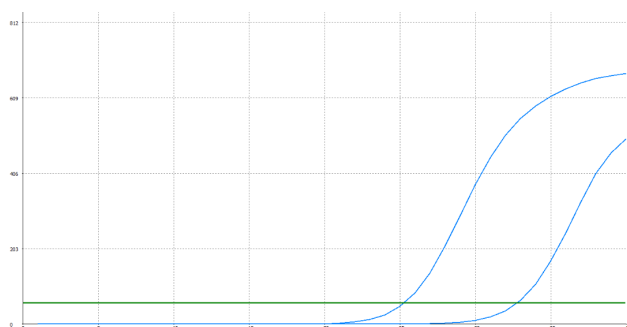
ORDERS

SALES@GENUINBIOTECH.COM
FAX: +1-540-855-7041

WWW.GENUINBIOTECH.COM

Human MAPK10 Knockdown Cell Line (WB-Validated)

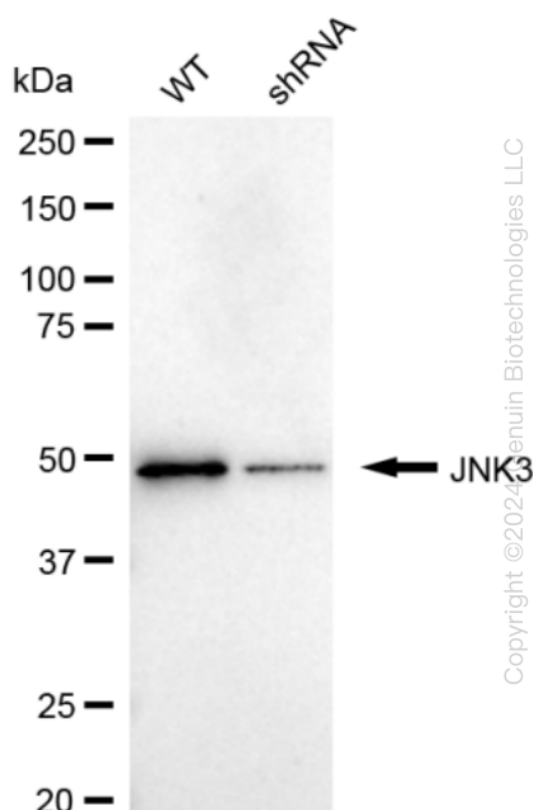
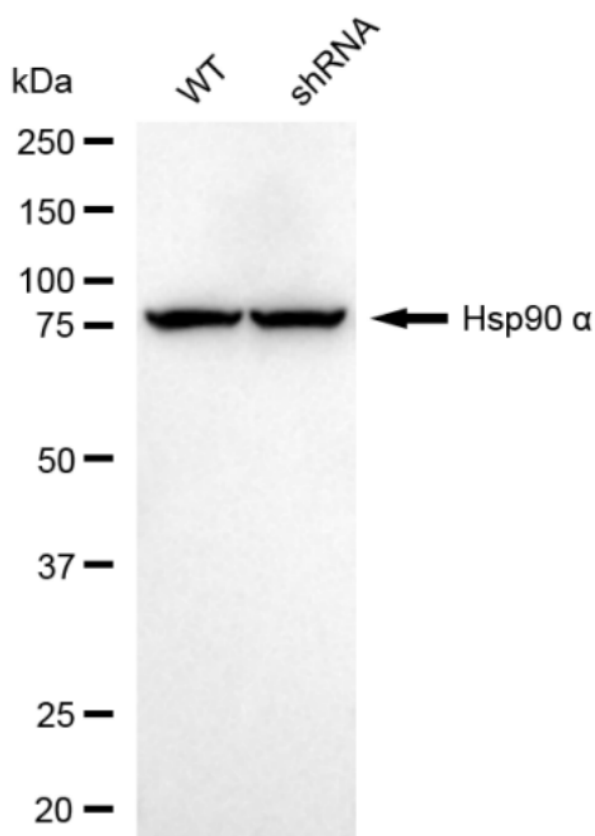
PAGE 2



Genotype	Ct Value
Wild-Type	25.02
Knock-Down	32.00
$\Delta Ct (Ct_{KD} - Ct_{WT})$	6.98
% mRNA Reduction	↓ 99.2%

Copyright ©2024 Genuin Biotechnologies LLC

RT-qPCR analysis. HeLa cells were infected with MAPK10-specific shRNA lentiviral particles, total RNA was extracted from wild-type and knockdown cells, RT-qPCR was performed using gene-specific primers. $\Delta Ct (Ct_{KD} - Ct_{WT})$ was used to calculate mRNA reduction (%) between wild-type and knockdown cells using the following formula: $(1 - 1/2^{\Delta Ct}) \times 100\%$.



Copyright ©2024 Genuin Biotechnologies LLC

Western blotting analysis. MAPK10 protein expression in wild-type (WT) and shRNA knockdown (KD) HeLa cells was detected using Western blotting. Hsp90 α served as a loading control. The blots were incubated with primary antibodies against MAPK10 and Hsp90 α , respectively, followed by incubating with HRP-conjugated goat anti-rabbit secondary antibody. Images were developed using FeQ™ ECL Substrate Kit.

SUPPORT

SUPPORT@GENUINBIOTECH.COM
TEL: +1-540-855-7041

ORDERS

SALES@GENUINBIOTECH.COM
FAX: +1-540-855-7041

WWW.GENUINBIOTECH.COM