

# Human NQO1 Knockdown Cell Line (WB-Validated)



**Catalog #: C62335**

## Aliases

NAD(P)H Quinone Dehydrogenase 1; QR1; DTD; DT-Diaphorase; NMOR1; DHQU; DIA4; Diaphorase (NADH/NADPH) (Cytochrome B-5 Reductase); NAD(P)H Dehydrogenase [Quinone] 1; NAD(P)H Dehydrogenase, Quinone 1; NAD(P)H:Quinone Oxidoreductase 1; NAD(P)H-Quinone Oxidoreductase; Phylloquinone Reductase; Menadione Reductase; Quinone Reductase 1; Azoreductase; EC 1.6.5.2; NAD(P)H:Quinone Acceptor Oxidoreductase Type 1; NAD(P)H:Menadione Oxidoreductase 1; NAD(P)H:Quinone Oxidoreductase; Dioxin-Inducible 1; Quinone Reductase; Diaphorase-4; NMORI

## Background

Gene Name: NQO1  
NCBI Gene Entry: [1728](#)

## Storage

Store at liquid nitrogen for 1 year.

## Kit Components

1. Human NQO1 Knockdown Cell Line (Wb-Validated)
2. Wild-type cell line

## Parental Cell Line

Human cell line supplied by the client

## Validation Methods

RT-qPCR, Western blotting (WB)

## Shipping

Shipped on Dry Ice.

## Instructions For Use

This knockdown cell line should be paired with wild-type cell line for use.

**Note:** This product is for research use only.

## Validation Data

---

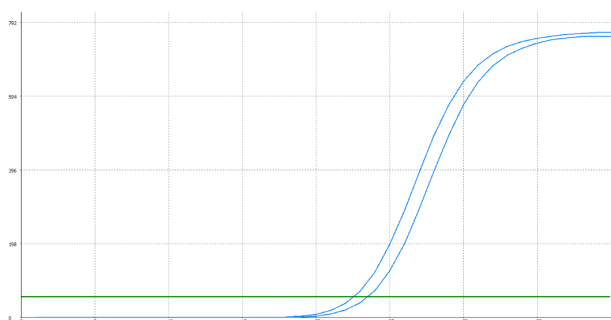
### SUPPORT

SUPPORT@GENUINBIOTECH.COM  
TEL: +1-540-855-7041

### ORDERS

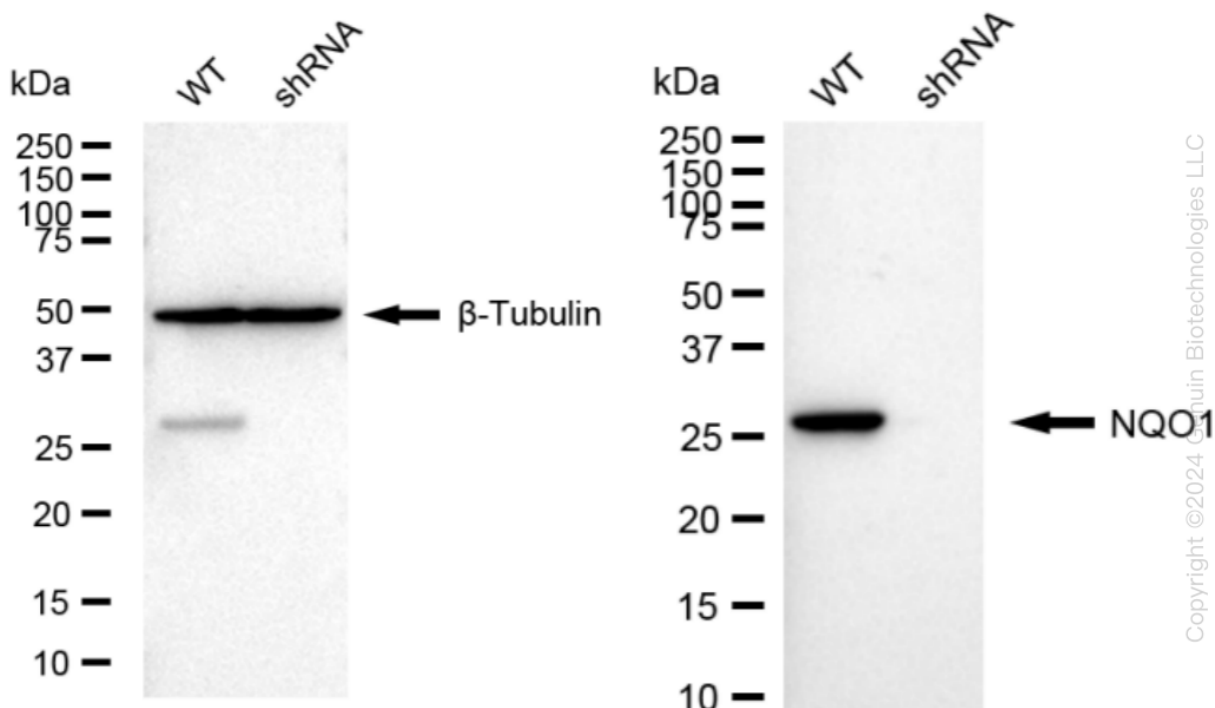
SALES@GENUINBIOTECH.COM  
FAX: +1-540-855-7041

[WWW.GENUINBIOTECH.COM](http://WWW.GENUINBIOTECH.COM)



Genotype	Ct Value
Wild-Type	22.50
Knock-Down	23.41
$\Delta\text{Ct (Ct}_{\text{KD}}\text{-Ct}_{\text{WT}})$	0.91
% mRNA Reduction	↓ 47%

RT-qPCR analysis. HeLa cells were infected with NQO1-specific shRNA lentiviral particles, total RNA was extracted from wild-type and knockdown cells, RT-qPCR was performed using gene-specific primers.  $\Delta\text{Ct (Ct}_{\text{KD}}\text{-Ct}_{\text{WT}})$  was used to calculate mRNA reduction (%) between wild-type and knockdown cells using the following formula:  $(1 - 1/2^{\Delta\text{Ct}}) \times 100\%$ .



Western blotting analysis. NQO1 protein expression in wild-type (WT) and shRNA knockdown (KD) HeLa cells was detected using Western blotting.  $\beta$ -Tubulin served as a loading control. The blots were incubated with primary antibodies against NQO1 and  $\beta$ -Tubulin, respectively, followed by incubating with HRP-conjugated goat anti-rabbit secondary antibody. Images were developed using FeQ™ ECL Substrate Kit.