

Human PABPN1 Knockdown Cell Line (WB-Validated)



Catalog #: C62337

Aliases

Poly(A) Binding Protein Nuclear 1; PAB2 ; PABP2; Polyadenylate-Binding Protein 2; PABP-2; PABII; OPMD; Polyadenylate-Binding Nuclear Protein 1; Poly(A)-Binding Protein, Nuclear 1; Poly(A) Binding Protein, Nuclear 1; Nuclear Poly(A)-Binding Protein 1; Poly(A) Binding Protein II; Poly(A)-Binding Protein II; Poly(A) Binding Protein 2; Poly(A)-Binding Protein 2

Background

Gene Name: PABPN1

NCBI Gene Entry: [8106](#)

Storage

Store at liquid nitrogen for 1 year.

Kit Components

1. Human PABPN1 Knockdown Cell Line (Wb-Validated)
2. Wild-type cell line

Parental Cell Line

Human cell line supplied by the client

Validation Methods

RT-qPCR, Western blotting (WB)

Shipping

Shipped on Dry Ice.

Instructions For Use

This knockdown cell line should be paired with wild-type cell line for use.

Note: This product is for research use only.

Validation Data

SUPPORT

SUPPORT@GENUINBIOTECH.COM
TEL: +1-540-855-7041

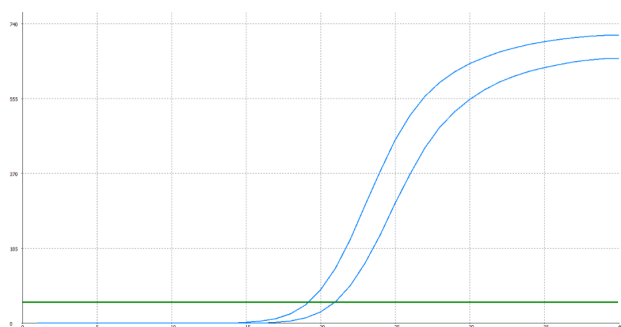
ORDERS

SALES@GENUINBIOTECH.COM
FAX: +1-540-855-7041

WWW.GENUINBIOTECH.COM

Human PABPN1 Knockdown Cell Line (WB-Validated)

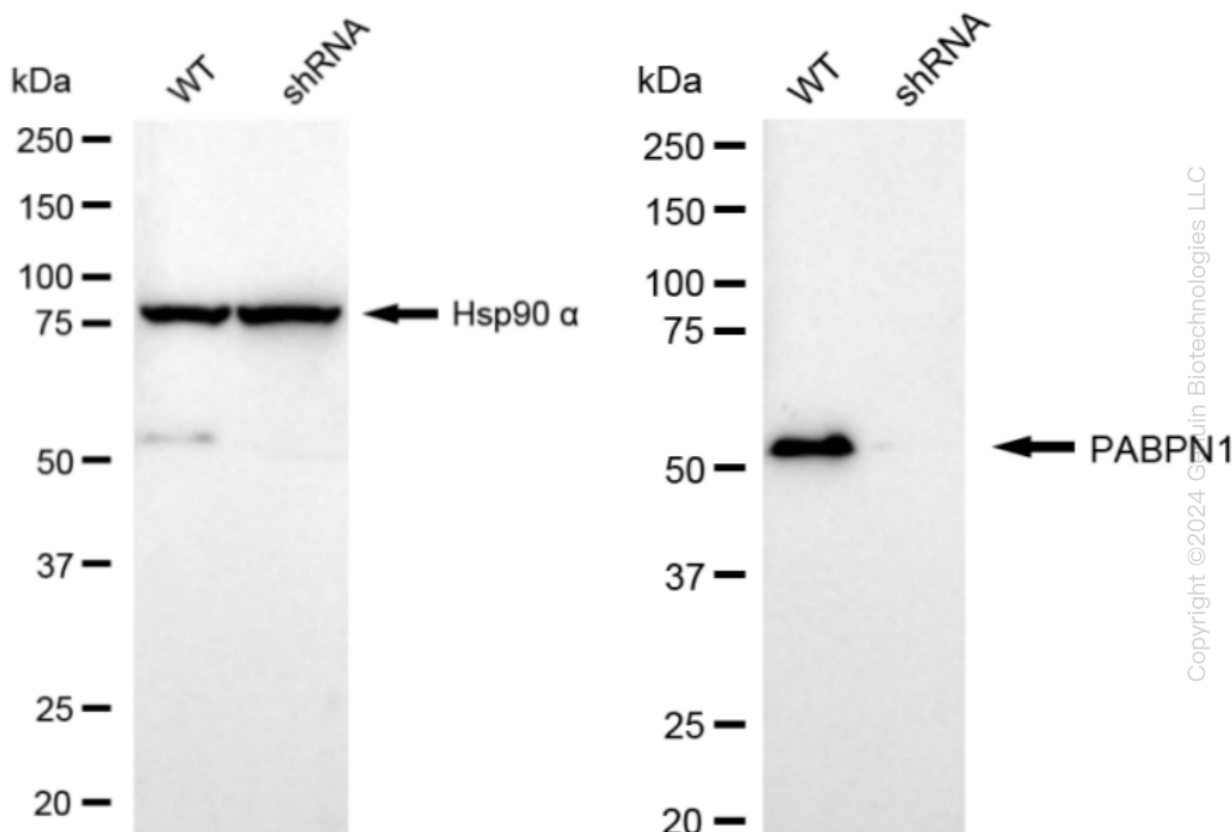
PAGE 2



Genotype	Ct Value
Wild-Type	19.13
Knock-Down	20.74
$\Delta Ct (Ct_{KD} - Ct_{WT})$	1.61
% mRNA Reduction	↓ 67%

Copyright ©2024 Genuin Biotechnologies LLC

RT-qPCR analysis. HT-1080 cells were infected with PABPN1-specific shRNA lentiviral particles, total RNA was extracted from wild-type and knockdown cells, RT-qPCR was performed using gene-specific primers. $\Delta Ct (Ct_{KD} - Ct_{WT})$ was used to calculate mRNA reduction (%) between wild-type and knockdown cells using the following formula: $(1 - 1/2^{\Delta Ct}) \times 100\%$.



Copyright ©2024 Genuin Biotechnologies LLC

Western blotting analysis. PABPN1 protein expression in wild-type (WT) and shRNA knockdown (KD) HT-1080 cells was detected using Western blotting. Hsp90 α served as a loading control. The blots were incubated with primary antibodies against PABPN1 and Hsp90 α , respectively, followed by incubating with HRP-conjugated goat anti-rabbit secondary antibody. Images were developed using FeQ™ ECL Substrate Kit.

SUPPORT

SUPPORT@GENUINBIOTECH.COM
TEL: +1-540-855-7041

ORDERS

SALES@GENUINBIOTECH.COM
FAX: +1-540-855-7041

WWW.GENUINBIOTECH.COM