

Human NAP1L1 Knockdown Cell Line (WB-Validated)



Catalog #: C62377

Aliases

Nucleosome Assembly Protein 1 Like 1; NRP; Nucleosome Assembly Protein 1-Like 1; NAP1L; NAP1; NAP-1-Related Protein; MGC23410; MGC8688; HSP22-Like Protein Interacting Protein; HNRP

Background

Gene Name: NAP1L1
NCBI Gene Entry: [4673](#)

Storage

Store at liquid nitrogen for 1 year.

Kit Components

1. Human NAP1L1 Knockdown Cell Line (Wb-Validated)
2. Wild-type cell line

Parental Cell Line

Human cell line supplied by the client

Validation Methods

RT-qPCR, Western blotting (WB)

Shipping

Shipped on Dry Ice.

Instructions For Use

This knockdown cell line should be paired with wild-type cell line for use.

Note: This product is for research use only.

Validation Data

SUPPORT

SUPPORT@GENUINBIOTECH.COM
TEL: +1-540-855-7041

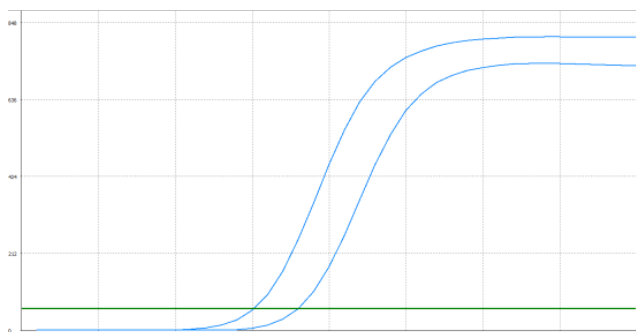
ORDERS

SALES@GENUINBIOTECH.COM
FAX: +1-540-855-7041

WWW.GENUINBIOTECH.COM

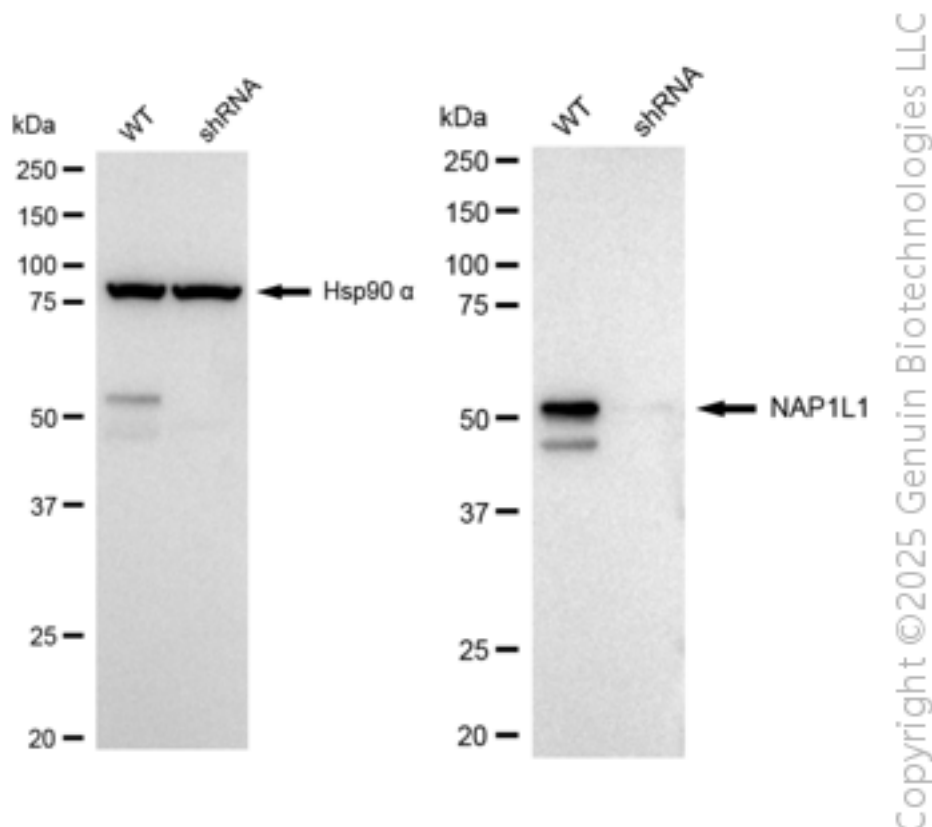
Human NAP1L1 Knockdown Cell Line (WB-Validated)

PAGE 2



Genotype	Ct Value
Wild-Type	15.07
Knock-Down	17.76
ΔCt (CtKD-CtWT)	2.69
% mRNA Reduction	85%

RT-qPCR analysis. HeLa cells were infected with NAP1L1-specific shRNA lentiviral particles, total RNA was extracted from wild-type and knockdown cells, RT-qPCR was performed using gene-specific primers. ΔCt (CtKD-CtWT) was used to calculate mRNA reduction (%) between wild-type and knockdown cells using the following formula: $(1 - 1/2^{\Delta Ct}) \times 100\%$.



Western blotting analysis. NAP1L1 protein expression in wild-type (WT) and shRNA knockdown (KD) HeLa cells was detected using Western blotting. Hsp90 α served as a loading control. The blots were incubated with primary antibodies against NAP1L1 and Hsp90 α , respectively, followed by incubating with HRP-conjugated goat anti-rabbit secondary antibody. Images were

SUPPORT

SUPPORT@GENUINBIOTECH.COM
TEL: +1-540-855-7041

ORDERS

SALES@GENUINBIOTECH.COM
FAX: +1-540-855-7041

WWW.GENUINBIOTECH.COM

Human NAP1L1 Knockdown Cell Line (WB-Validated)

PAGE 3

developed using FeQ™ ECL Substrate Kit.

SUPPORT

SUPPORT@GENUINBIOTECH.COM
TEL: +1-540-855-7041

ORDERS

SALES@GENUINBIOTECH.COM
FAX:+1-540-855-7041

WWW.GENUINBIOTECH.COM