

Human PA2G4 Knockdown Cell Line (WB-Validated)



Catalog #: C62383

Aliases

Proliferation-Associated 2G4; EBP1; IRES-Specific Cellular Transacting Factor 45; Proliferation-Associated Protein 2G4; Proliferation-Associated 2G4, 38kDa; Proliferation-Associated 2G4, 38kD; Cell Cycle Protein P38-2G4 Homolog; ErbB-3 Receptor Binding Protein; ErbB3-Binding Protein 1; ITAF45; HG4-1; ErbB3-Binding Protein Ebp1; ErbB-3 Binding Protein 1; P38-2G4

Background

Gene Name: PA2G4

NCBI Gene Entry: [5036](#)

Storage

Store at liquid nitrogen for 1 year.

Kit Components

1. Human PA2G4 Knockdown Cell Line (Wb-Validated)
2. Wild-type cell line

Parental Cell Line

Human cell line supplied by the client

Validation Methods

RT-qPCR, Western blotting (WB)

Shipping

Shipped on Dry Ice.

Instructions For Use

This knockdown cell line should be paired with wild-type cell line for use.

Note: This product is for research use only.

Validation Data

SUPPORT

SUPPORT@GENUINBIOTECH.COM
TEL: +1-540-855-7041

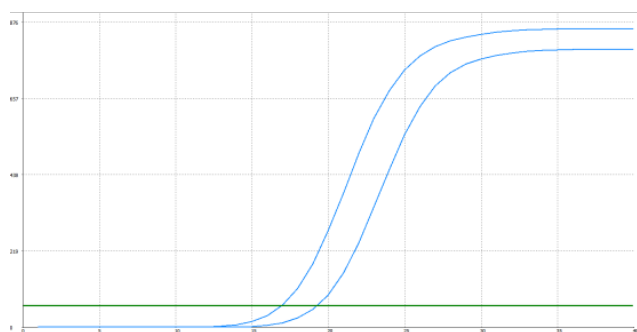
ORDERS

SALES@GENUINBIOTECH.COM
FAX: +1-540-855-7041

WWW.GENUINBIOTECH.COM

Human PA2G4 Knockdown Cell Line (WB-Validated)

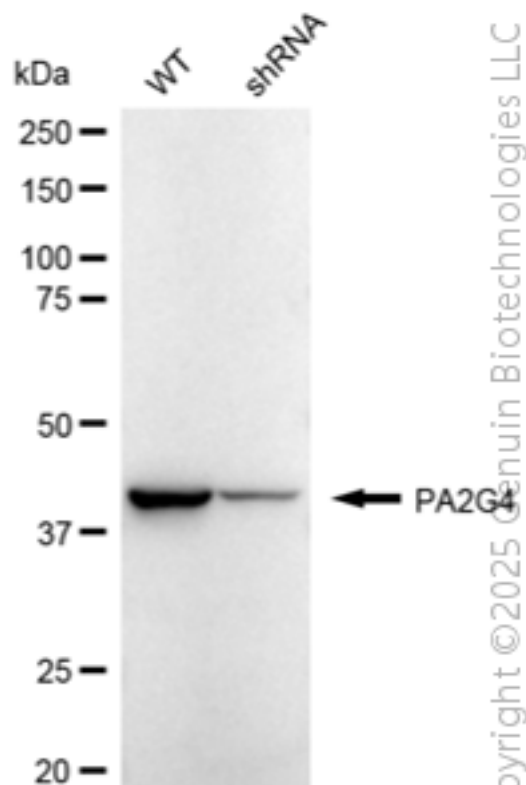
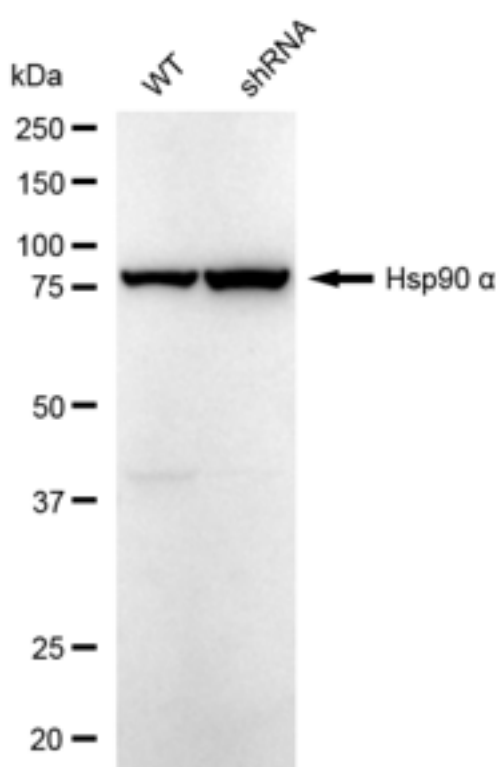
PAGE 2



Genotype	Ct Value
Wild-Type	16.94
Knock-Down	19.13
ΔCt (CtKD-CtWT)	2.19
% mRNA Reduction	78%

Copyright © 2025 Genuin Biotechnologies LLC

RT-qPCR analysis. HeLa cells were infected with PA2G4-specific shRNA lentiviral particles, total RNA was extracted from wild-type and knockdown cells, RT-qPCR was performed using gene-specific primers. ΔCt (CtKD-CtWT) was used to calculate mRNA reduction (%) between wild-type and knockdown cells using the following formula: $(1 - 1/2^{\Delta Ct}) \times 100\%$.



Copyright © 2025 Genuin Biotechnologies LLC

Western blotting analysis. PA2G4 protein expression in wild-type (WT) and shRNA knockdown (KD) HeLa cells was detected using Western blotting. Hsp90 α served as a loading control. The blots were incubated with primary antibodies against PA2G4 and Hsp90 α , respectively, followed by incubating with HRP-conjugated goat anti-rabbit secondary antibody. Images were developed

SUPPORT

SUPPORT@GENUINBIOTECH.COM
TEL: +1-540-855-7041

ORDERS

SALES@GENUINBIOTECH.COM
FAX: +1-540-855-7041

WWW.GENUINBIOTECH.COM

Human PA2G4 Knockdown Cell Line (WB-Validated)

PAGE 3

using FeQ™ ECL Substrate Kit.

SUPPORT

SUPPORT@GENUINBIOTECH.COM
TEL: +1-540-855-7041

ORDERS

SALES@GENUINBIOTECH.COM
FAX: +1-540-855-7041

WWW.GENUINBIOTECH.COM