

# Human LYN Knockdown Cell Line (WB-Validated)



**Catalog #: C62412**

## Aliases

LYN; LYN Proto-Oncogene, Src Family Tyrosine Kinase; JTK8; V-Yes-1 Yamaguchi Sarcoma Viral Related Oncogene Homolog; Lck/Yes-Related Novel Protein Tyrosine Kinase; Tyrosine-Protein Kinase Lyn; EC 2.7.10.2; P53Lyn; P56Lyn; EC 2.7.10; SAIDV

## Background

Gene Name: LYN

NCBI Gene Entry: [4067](#)

## Storage

Store at liquid nitrogen for 1 year.

## Kit Components

1. Human LYN Knockdown Cell Line (Wb-Validated)
2. Wild-type cell line

## Parental Cell Line

Human cell line supplied by the client

## Validation Methods

RT-qPCR, Western blotting (WB)

## Shipping

Shipped on Dry Ice.

## Instructions For Use

This knockdown cell line should be paired with wild-type cell line for use.

**Note:** This product is for research use only.

## Validation Data

---

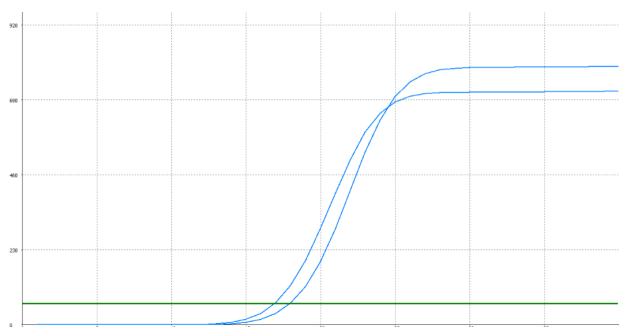
### SUPPORT

SUPPORT@GENUINBIOTECH.COM  
TEL: +1-540-855-7041

### ORDERS

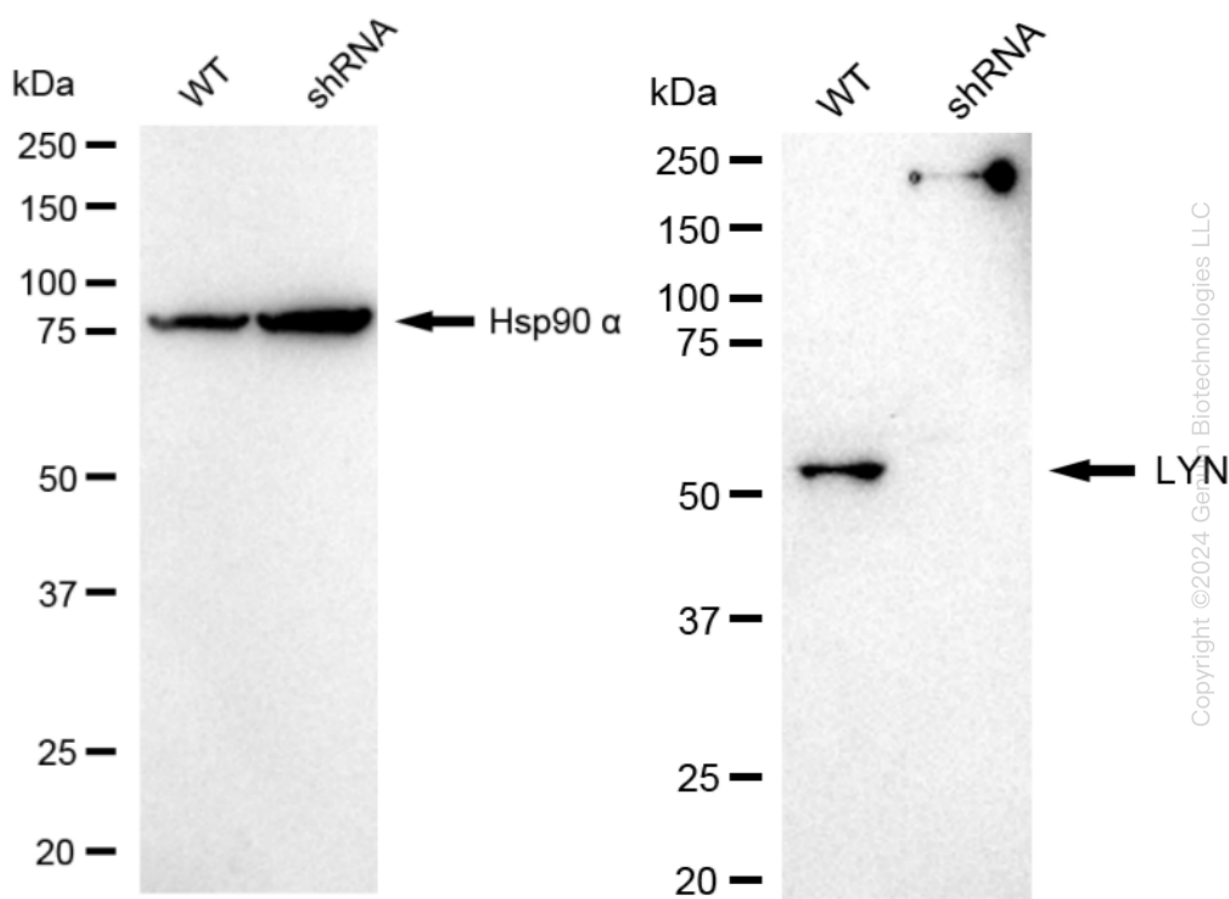
SALES@GENUINBIOTECH.COM  
FAX: +1-540-855-7041

[WWW.GENUINBIOTECH.COM](http://WWW.GENUINBIOTECH.COM)



Genotype	Ct Value
Wild-Type	16.48
Knock-Down	17.69
$\Delta Ct (Ct_{KD} - Ct_{WT})$	1.21
% mRNA Reduction	↓ 57%

RT-qPCR analysis. HeLa cells were infected with LYN-specific shRNA lentiviral particles, total RNA was extracted from wild-type and knockdown cells, RT-qPCR was performed using gene-specific primers.  $\Delta Ct (Ct_{KD} - Ct_{WT})$  was used to calculate mRNA reduction (%) between wild-type and knockdown cells using the following formula:  $(1 - 1/2^{\Delta Ct}) \times 100\%$ .



Western blotting analysis. LYN protein expression in wild-type (WT) and shRNA knockdown (KD) HeLa cells was detected using Western blotting. Hsp90  $\alpha$  served as a loading control. The blots were incubated with primary antibodies against LYN and Hsp90  $\alpha$ , respectively, followed by incubating with HRP-conjugated goat anti-rabbit secondary antibody. Images were developed using FeQ™ ECL Substrate Kit.