

Human NR2C2 Knockdown Cell Line (WB-Validated)



Catalog #: C62414

Aliases

NR2C2; Nuclear Receptor Subfamily 2 Group C Member 2; TAK1; TR4; Orphan Nuclear Receptor TAK1; Orphan Nuclear Receptor TR4; TR2R1; HTAK1; Nuclear Receptor Subfamily 2, Group C, Member 2; Testicular Nuclear Receptor 4; Nuclear Hormone Receptor TR4; Testicular Receptor 4; Orphan Receptor TR4

Background

Gene Name: NR2C2
NCBI Gene Entry: [7182](#)

Storage

Store at liquid nitrogen for 1 year.

Kit Components

1. Human NR2C2 Knockdown Cell Line (Wb-Validated)
2. Wild-type cell line

Parental Cell Line

Human cell line supplied by the client

Validation Methods

RT-qPCR, Western blotting (WB)

Shipping

Shipped on Dry Ice.

Instructions For Use

This knockdown cell line should be paired with wild-type cell line for use.

Note: This product is for research use only.

Validation Data

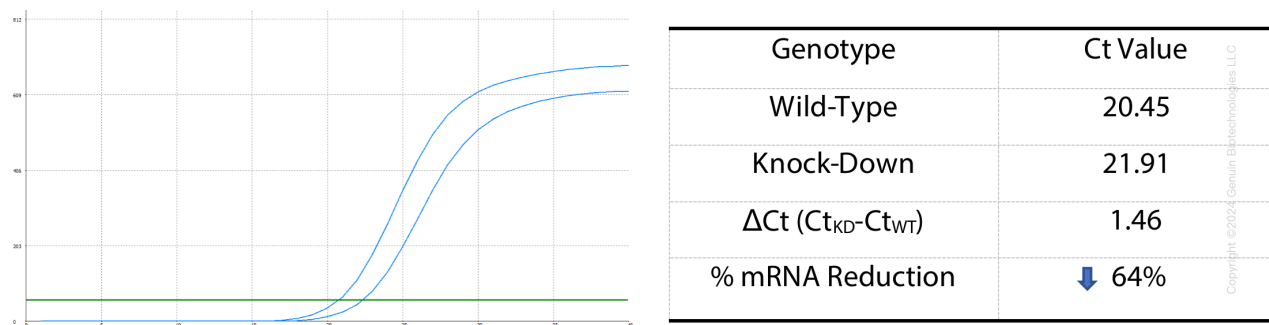
SUPPORT

SUPPORT@GENUINBIOTECH.COM
TEL: +1-540-855-7041

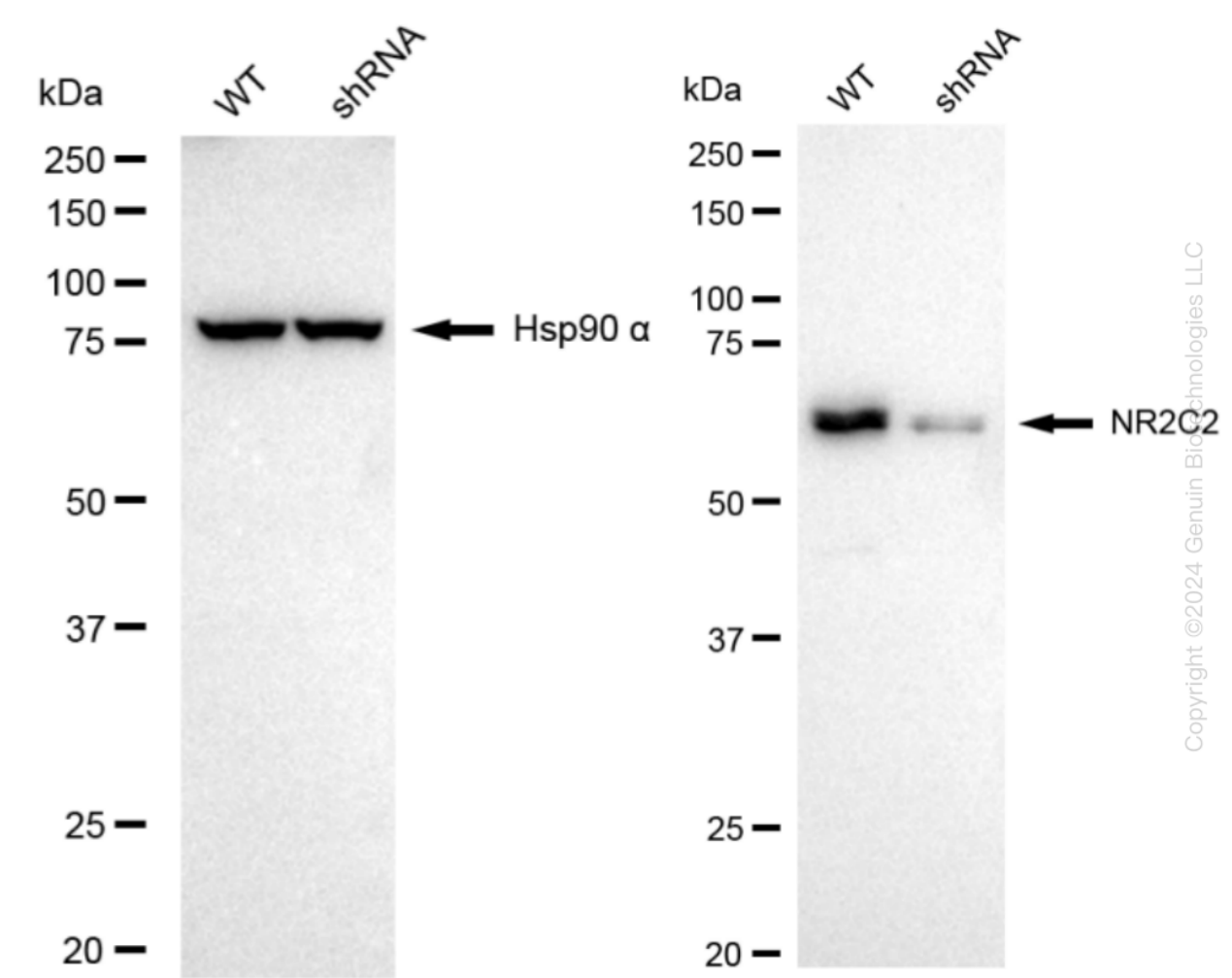
ORDERS

SALES@GENUINBIOTECH.COM
FAX: +1-540-855-7041

WWW.GENUINBIOTECH.COM



RT-qPCR analysis. HT-1080 cells were infected with NR2C2-specific shRNA lentiviral particles, total RNA was extracted from wild-type and knockdown cells, RT-qPCR was performed using gene-specific primers. ΔCt ($Ct_{KD} - Ct_{WT}$) was used to calculate mRNA reduction (%) between wild-type and knockdown cells using the following formula: $(1 - 1/2^{\Delta Ct}) \times 100\%$.



Western blotting analysis. NR2C2 protein expression in wild-type (WT) and shRNA knockdown (KD) HT-1080 cells was detected using Western blotting. Hsp90 α served as a loading control. The blots were incubated with primary antibodies against NR2C2 and Hsp90 α , respectively, followed by incubating with HRP-conjugated goat anti-rabbit secondary antibody. Images were developed

Human NR2C2 Knockdown Cell Line (WB-Validated)

PAGE 3

using FeQ™ ECL Substrate Kit.

SUPPORT

SUPPORT@GENUINBIOTECH.COM
TEL: +1-540-855-7041

ORDERS

SALES@GENUINBIOTECH.COM
FAX: +1-540-855-7041

WWW.GENUINBIOTECH.COM