

# Human PCBD1 Knockdown Cell Line (WB-Validated)



**Catalog #: C62427**

## Aliases

PCBD1; Pterin-4 Alpha-Carbinolamine DehydRatase 1; PCD; DCOH; PCBD; 6-Pyruvoyl-Tetrahydropterin Synthase/Dimerization Cofactor Of Hepatocyte Nuclear Factor 1 Alpha (TCF1); Pterin-4 Alpha-Carbinolamine DehydRatase/Dimerization Cofactor Of Hepatocyte Nuclear Factor 1 Alpha; Phenylalanine Hydroxylase-Stimulating Protein; 4-Alpha-Hydroxy-Tetrahydropterin DehydRatase; Pterin-4-Alpha-Carbinolamine DehydRatase; Dimerizing Cofactor For HNF1; EC 4.2.1.96; PHS; Pterin-4 Alpha-Carbinolamine DehydRatase/Dimerization Cofactor Of Hepatocyte Nuclear Factor 1 Alpha (TCF1); Pterin-4a-Carbinolamine DehydRatase (Dimerization Cofactor Of Hepatic Nuclear Factor 1-Alpha); Dimerization Cofactor Of Hepatocyte Nuclear Factor 1-Alpha; Pterin-4-Alpha Carbinolamine DehydRatase; Pterin Carbinolamine DehydRatase; Dimerization Cofactor Of HNF1; DCoH

## Background

Gene Name: PCBD1

NCBI Gene Entry: [5092](#)

## Storage

Store at liquid nitrogen for 1 year.

## Kit Components

1. Human PCBD1 Knockdown Cell Line (Wb-Validated)
2. Wild-type cell line

## Parental Cell Line

Human cell line supplied by the client

## Validation Methods

RT-qPCR, Western blotting (WB)

## Shipping

Shipped on Dry Ice.

## Instructions For Use

This knockdown cell line should be paired with wild-type cell line for use.

---

### SUPPORT

SUPPORT@GENUINBIOTECH.COM  
TEL: +1-540-855-7041

### ORDERS

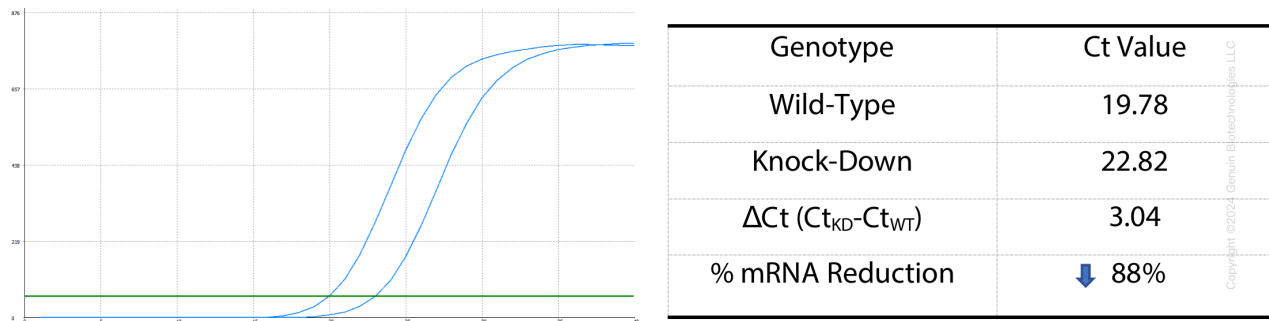
SALES@GENUINBIOTECH.COM  
FAX: +1-540-855-7041

[WWW.GENUINBIOTECH.COM](http://WWW.GENUINBIOTECH.COM)

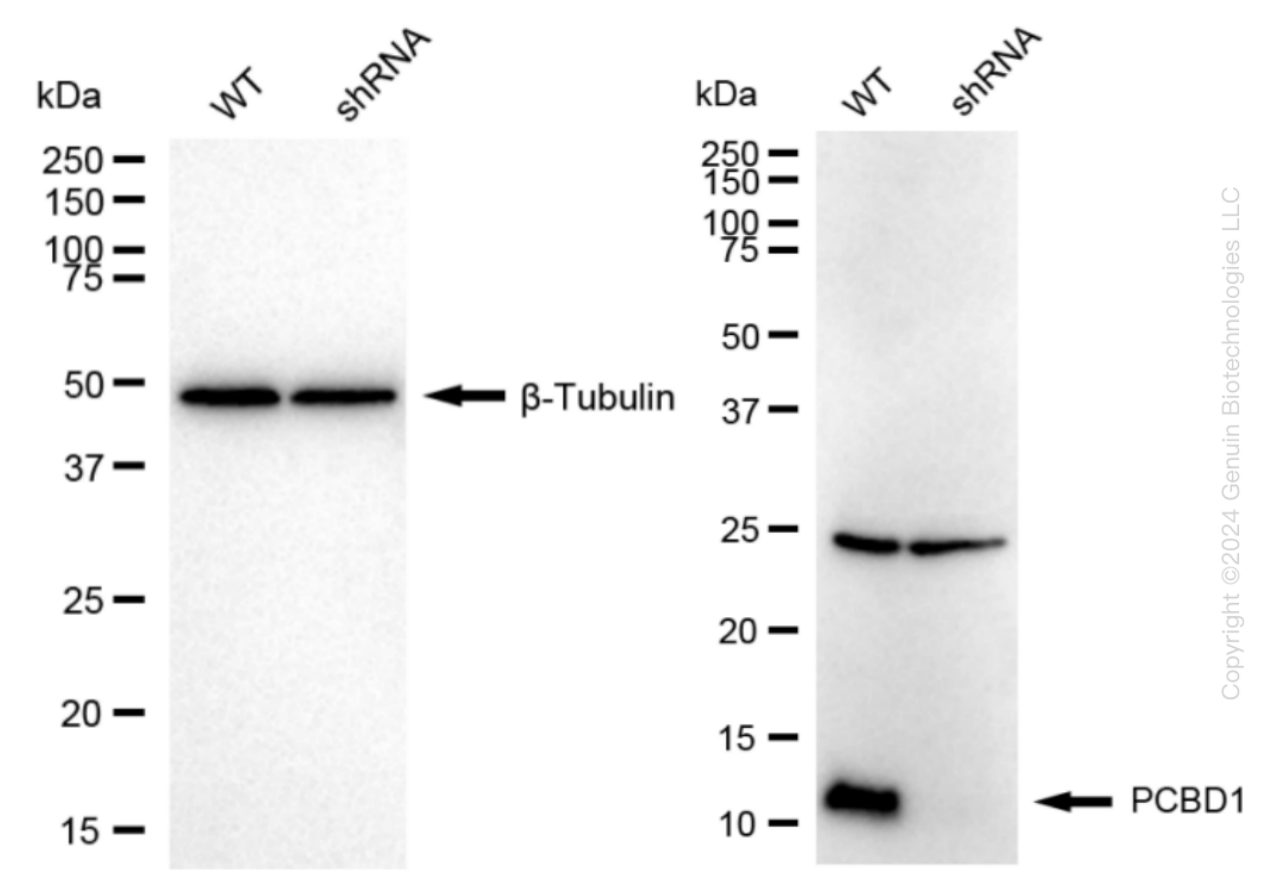
Human PCBD1 Knockdown Cell Line (WB-Validated)

**Note:** This product is for research use only.

Validation Data



RT-qPCR analysis. HeLa cells were infected with PCBD1-specific shRNA lentiviral particles, total RNA was extracted from wild-type and knockdown cells, RT-qPCR was performed using gene-specific primers.  $\Delta Ct (Ct_{KD}-Ct_{WT})$  was used to calculate mRNA reduction (%) between wild-type and knockdown cells using the following formula:  $(1-1/2^{\Delta Ct}) \times 100\%$ .



Western blotting analysis. PCBD1 protein expression in wild-type (WT) and shRNA knockdown (KD) HeLa cells was detected using Western blotting.  $\beta$ -Tubulin served as a loading control. The blots were incubated with primary antibodies against PCBD1 and  $\beta$ -Tubulin, respectively, followed by incubating with HRP-conjugated goat anti-rabbit secondary antibody. Images were

## **Human PCBD1 Knockdown Cell Line (WB-Validated)**

PAGE 3

developed using FeQ™ ECL Substrate Kit.

---

### **SUPPORT**

SUPPORT@GENUINBIOTECH.COM  
TEL: +1-540-855-7041

### **ORDERS**

SALES@GENUINBIOTECH.COM  
FAX:+1-540-855-7041

**WWW.GENUINBIOTECH.COM**