

Human RAB4A Knockdown Cell Line (WB-Validated)



Catalog #: C62435

Aliases

RAB4A; RAB4A, Member RAS Oncogene Family; HRES-1/RAB4; RAB4; Ras-Related Protein Rab-4A; HTLV-1 Related Endogenous Sequence; EC 3.6.5.2; HRES-1; HRES1

Background

Gene Name: RAB4A

NCBI Gene Entry: [5867](#)

Storage

Store at liquid nitrogen for 1 year.

Kit Components

1. Human RAB4A Knockdown Cell Line (Wb-Validated)
2. Wild-type cell line

Parental Cell Line

Human cell line supplied by the client

Validation Methods

RT-qPCR, Western blotting (WB)

Shipping

Shipped on Dry Ice.

Instructions For Use

This knockdown cell line should be paired with wild-type cell line for use.

Note: This product is for research use only.

Validation Data

SUPPORT

SUPPORT@GENUINBIOTECH.COM
TEL: +1-540-855-7041

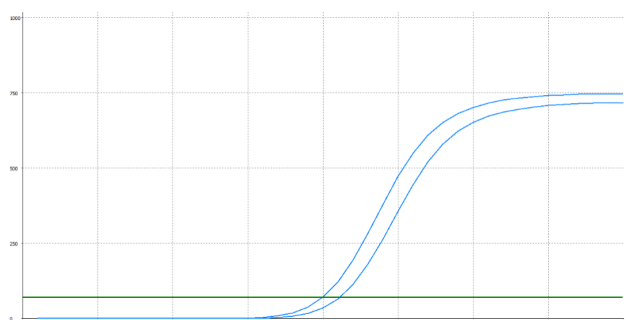
ORDERS

SALES@GENUINBIOTECH.COM
FAX: +1-540-855-7041

WWW.GENUINBIOTECH.COM

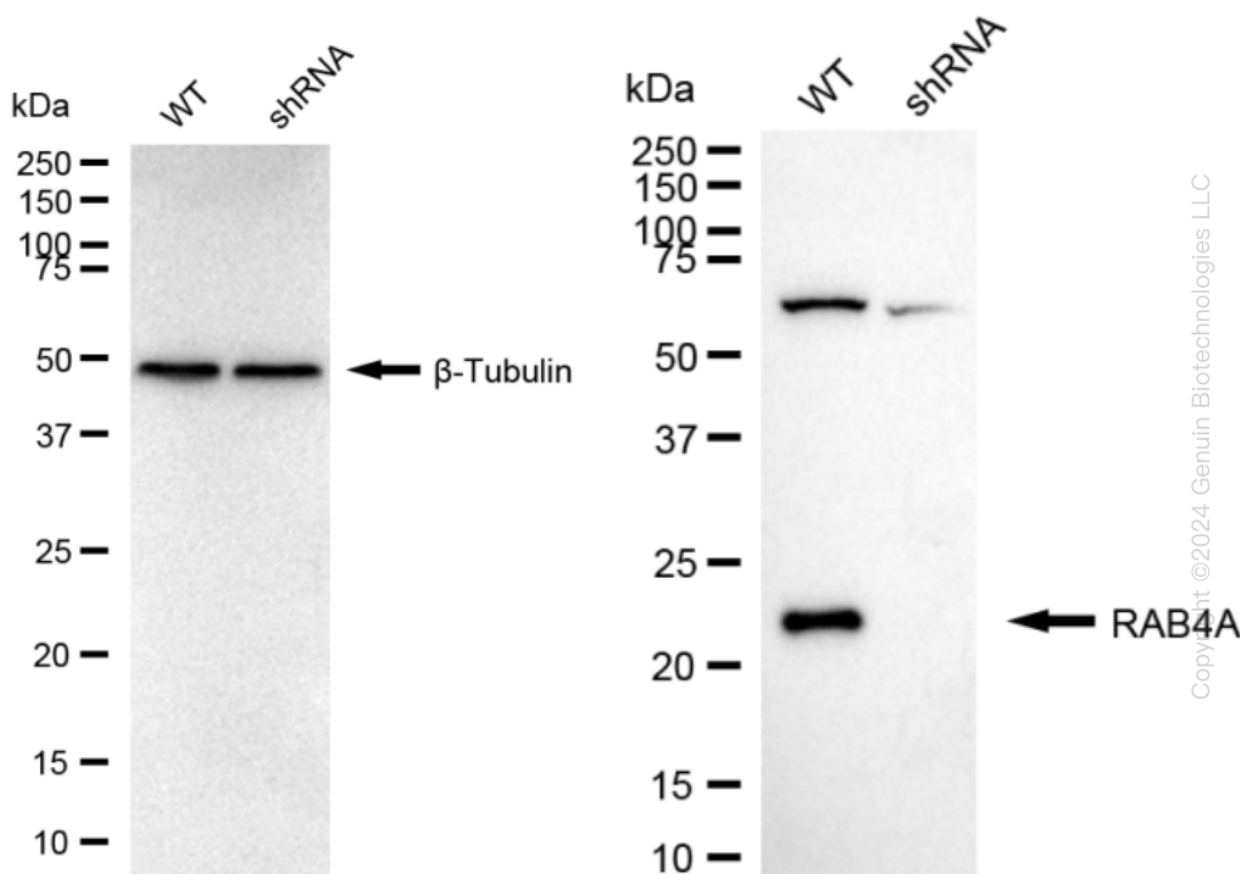
Human RAB4A Knockdown Cell Line (WB-Validated)

PAGE 2



Genotype	Ct Value
Wild-Type	19.47
Knock-Down	20.52
ΔCt (Ct _{KD} -Ct _{WT})	1.07
% mRNA Reduction	↓ 52%

RT-qPCR analysis. HeLa cells were infected with RAB4A-specific shRNA lentiviral particles, total RNA was extracted from wild-type and knockdown cells, RT-qPCR was performed using gene-specific primers. ΔCt (Ct_{KD}-Ct_{WT}) was used to calculate mRNA reduction (%) between wild-type and knockdown cells using the following formula: $(1 - 1/2^{\Delta Ct}) \times 100\%$.



Western blotting analysis. RAB4A protein expression in wild-type (WT) and shRNA knockdown (KD) HeLa cells was detected using Western blotting. β -Tubulin served as a loading control. The blots were incubated with primary antibodies against RAB4A and β -Tubulin, respectively, followed by incubating with HRP-conjugated goat anti-rabbit secondary antibody. Images were developed using FeQ™ ECL Substrate Kit.

SUPPORT

SUPPORT@GENUINBIOTECH.COM
TEL: +1-540-855-7041

ORDERS

SALES@GENUINBIOTECH.COM
FAX: +1-540-855-7041

WWW.GENUINBIOTECH.COM