

Human PSIP1 Knockdown Cell Line (WB-Validated)



Catalog #: C62438

Aliases

PSIP1; PC4 And SRSF1 Interacting Protein 1; LEDGF; DFS70; Lens Epithelium-Derived Growth Factor; PSIP2; P52; P75; PC4 And SFRS1 Interacting Protein 1; Dense Fine Speckles 70 KDa Protein; PC4 And SFRS1-Interacting Protein; CLL-Associated Antigen KW-7; PC4 And SFRS1 Interacting Protein 2; Transcriptional Coactivator P52/P75; Transcriptional Coactivator P75/P52; DFS 70; PAIP

Background

Gene Name: PSIP1

NCBI Gene Entry: [11168](#)

Storage

Store at liquid nitrogen for 1 year.

Kit Components

1. Human PSIP1 Knockdown Cell Line (Wb-Validated)
2. Wild-type cell line

Parental Cell Line

Human cell line supplied by the client

Validation Methods

RT-qPCR, Western blotting (WB)

Shipping

Shipped on Dry Ice.

Instructions For Use

This knockdown cell line should be paired with wild-type cell line for use.

Note: This product is for research use only.

Validation Data

SUPPORT

SUPPORT@GENUINBIOTECH.COM
TEL: +1-540-855-7041

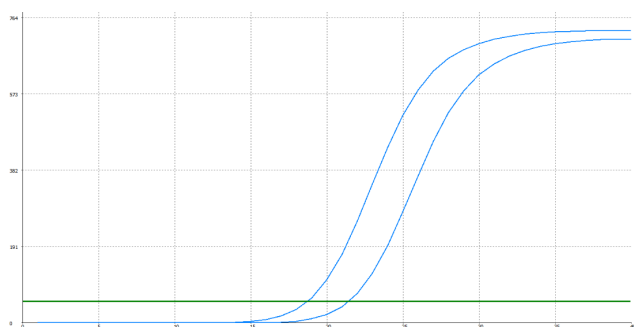
ORDERS

SALES@GENUINBIOTECH.COM
FAX: +1-540-855-7041

WWW.GENUINBIOTECH.COM

Human PSIP1 Knockdown Cell Line (WB-Validated)

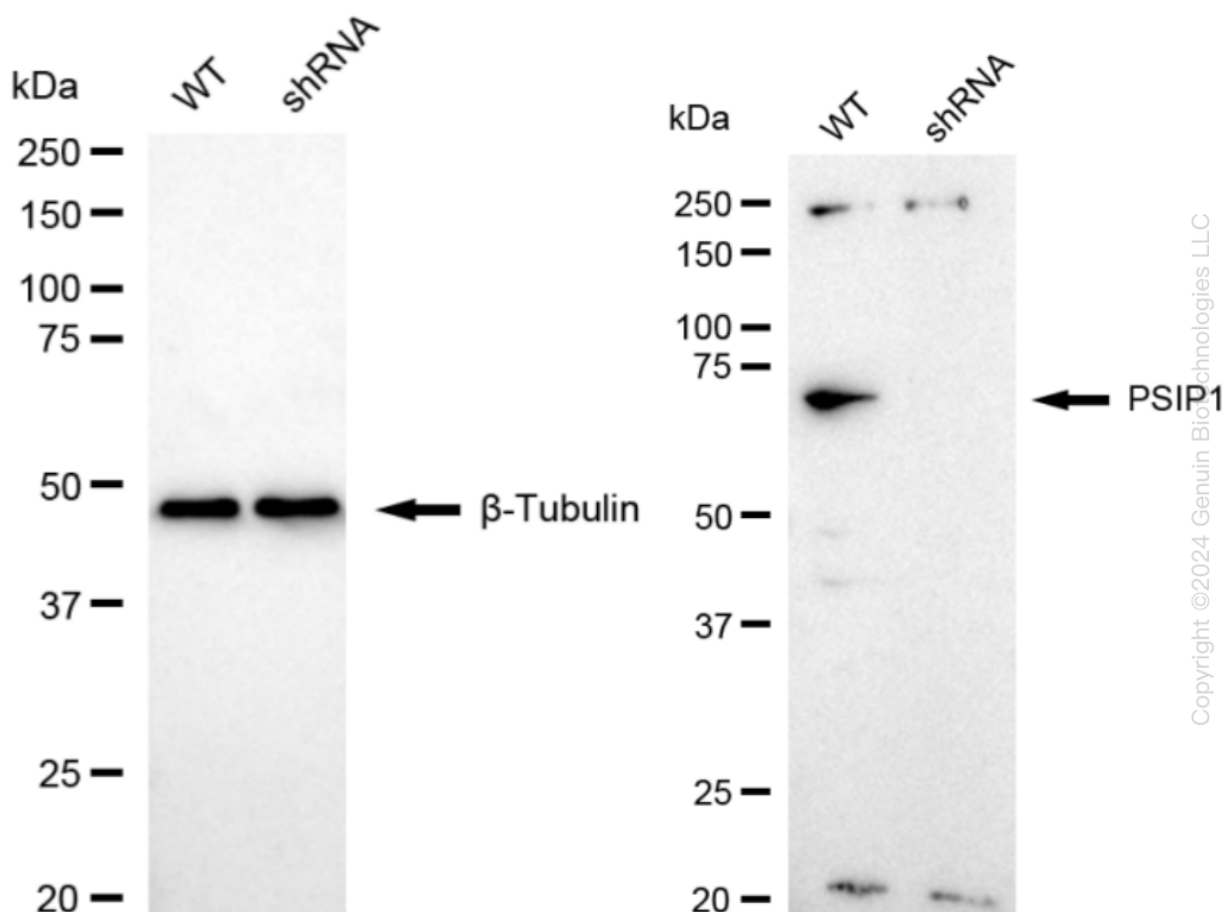
PAGE 2



Genotype	Ct Value
Wild-Type	18.64
Knock-Down	21.29
$\Delta Ct (Ct_{KD} - Ct_{WT})$	2.65
% mRNA Reduction	↓ 84%

Copyright ©2024 Genuin Biotechnologies LLC

RT-qPCR analysis. HeLa cells were infected with PSIP1-specific shRNA lentiviral particles, total RNA was extracted from wild-type and knockdown cells, RT-qPCR was performed using gene-specific primers. $\Delta Ct (Ct_{KD} - Ct_{WT})$ was used to calculate mRNA reduction (%) between wild-type and knockdown cells using the following formula: $(1 - 1/2^{\Delta Ct}) \times 100\%$.



Copyright ©2024 Genuin Biotechnologies LLC

Western blotting analysis. PSIP1 protein expression in wild-type (WT) and shRNA knockdown (KD) HeLa cells was detected using Western blotting. β -Tubulin served as a loading control. The blots were incubated with primary antibodies against PSIP1 and β -Tubulin, respectively, followed by incubating with HRP-conjugated goat anti-rabbit secondary antibody. Images were developed using FeQ™ ECL Substrate Kit.

SUPPORT

SUPPORT@GENUINBIOTECH.COM
TEL: +1-540-855-7041

ORDERS

SALES@GENUINBIOTECH.COM
FAX: +1-540-855-7041

WWW.GENUINBIOTECH.COM