

# Human RAB7A Knockdown Cell Line (WB-Validated)



**Catalog #: C62449**

## Aliases

RAB7A, Member RAS Oncogene Family; RAB7; RAB7, Member RAS Oncogene Family; Ras-Related Protein Rab-7a; CMT2B; Charcot-Marie-Tooth Neuropathy 2B; Ras-Associated Protein RAB7; EC 3.6.5.2; PRO2706

## Background

Gene Name: RAB7A  
NCBI Gene Entry: [7879](#)

## Storage

Store at liquid nitrogen for 1 year.

## Kit Components

1. Human RAB7A Knockdown Cell Line (Wb-Validated)
2. Wild-type cell line

## Parental Cell Line

Human cell line supplied by the client

## Validation Methods

RT-qPCR, Western blotting (WB)

## Shipping

Shipped on Dry Ice.

## Instructions For Use

This knockdown cell line should be paired with wild-type cell line for use.

**Note:** This product is for research use only.

## Validation Data

---

### SUPPORT

SUPPORT@GENUINBIOTECH.COM  
TEL: +1-540-855-7041

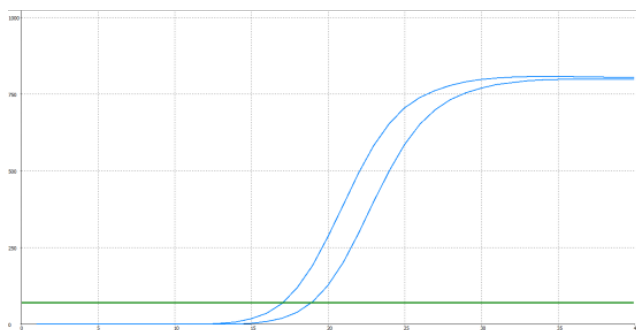
### ORDERS

SALES@GENUINBIOTECH.COM  
FAX: +1-540-855-7041

[WWW.GENUINBIOTECH.COM](http://WWW.GENUINBIOTECH.COM)

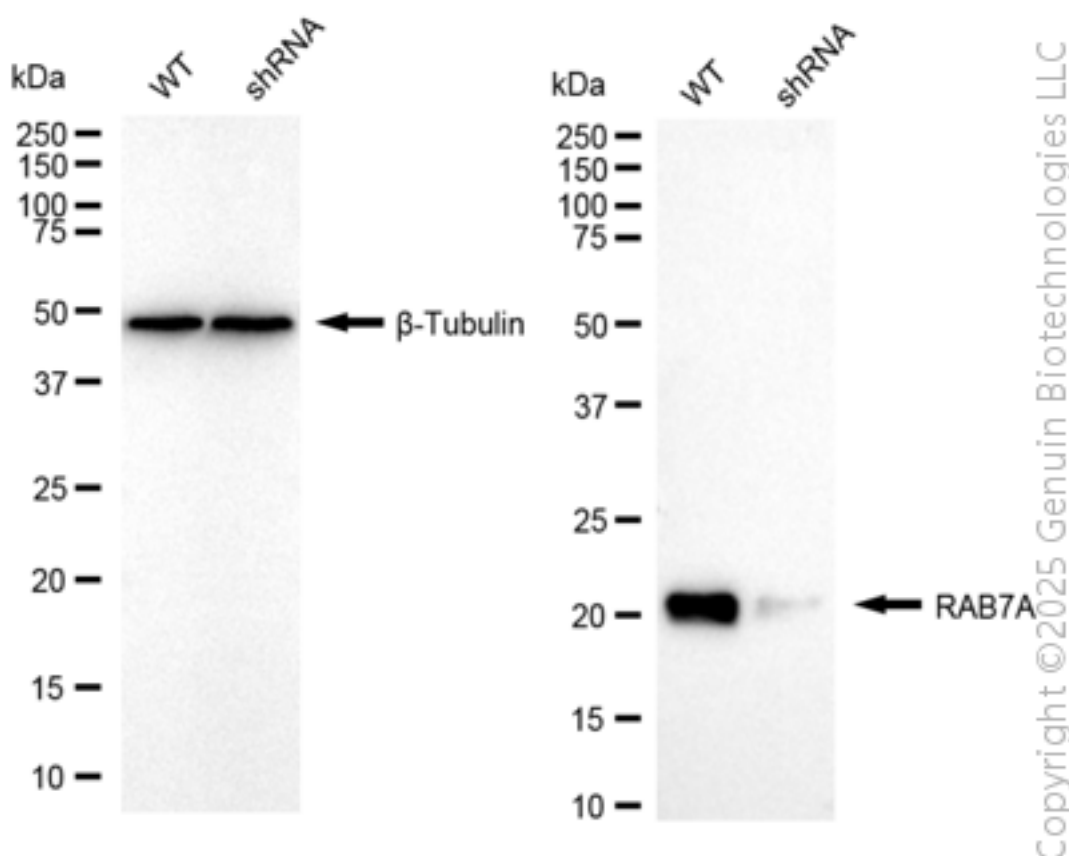
## Human RAB7A Knockdown Cell Line (WB-Validated)

PAGE 2



Genotype	Ct Value
Wild-Type	16.67
Knock-Down	18.50
$\Delta Ct$ (CtKD-CtWT)	1.83
% mRNA Reduction	72%

RT-qPCR analysis. HeLa cells were infected with RAB7A-specific shRNA lentiviral particles, total RNA was extracted from wild-type and knockdown cells, RT-qPCR was performed using gene-specific primers.  $\Delta Ct$  (CtKD-CtWT) was used to calculate mRNA reduction (%) between wild-type and knockdown cells using the following formula:  $(1 - 1/2^{\Delta Ct}) \times 100\%$ .



Western blotting analysis. RAB7A protein expression in wild-type (WT) and shRNA knockdown

### SUPPORT

SUPPORT@GENUINBIOTECH.COM  
TEL: +1-540-855-7041

### ORDERS

SALES@GENUINBIOTECH.COM  
FAX: +1-540-855-7041

[WWW.GENUINBIOTECH.COM](http://WWW.GENUINBIOTECH.COM)

Copyright ©2025 Genuin Biotechnologies LLC

## **Human RAB7A Knockdown Cell Line (WB-Validated)**

PAGE 3

(KD) HeLa cells was detected using Western blotting.  $\beta$ -Tubulin served as a loading control. The blots were incubated with primary antibodies against RAB7A and  $\beta$ -Tubulin, respectively, followed by incubating with HRP-conjugated goat anti-rabbit secondary antibody. Images were developed using FeQ™ ECL Substrate Kit.

---

### **SUPPORT**

SUPPORT@GENUINBIOTECH.COM  
TEL: +1-540-855-7041

### **ORDERS**

SALES@GENUINBIOTECH.COM  
FAX: +1-540-855-7041

**WWW.GENUINBIOTECH.COM**