

Human PRDX6 Knockdown Cell Line (WB-Validated)



Catalog #: C62453

Aliases

Peroxiredoxin 6; AiPLA2; NSGPx; AOP2; KIAA0106; 1-Cys; PRX; P29; Acidic Calcium-Independent Phospholipase A2; Lysophosphatidylcholine Acyltransferase 5; Glutathione-Dependent Peroxiredoxin; Non-Selenium Glutathione Peroxidase; Red Blood Cells Page Spot 12; Lyso-PC Acyltransferase 5; LPC Acyltransferase 5; Antioxidant Protein 2; Liver 2D Page Spot 40; 1-Cys Peroxiredoxin; Peroxiredoxin-6; 24 KDa Protein; 1-Cys PRX; MGC46173; LPCAT-5; Epididymis Secretory Sperm Binding Protein Li 128m; EC 1.11.1.27; EC 1.11.1.15; EC 2.3.1.23; HEL-S-128m; EC 3.1.1.4

Background

Gene Name: PRDX6

NCBI Gene Entry: [9588](#)

Storage

Store at liquid nitrogen for 1 year.

Kit Components

1. Human PRDX6 Knockdown Cell Line (Wb-Validated)
2. Wild-type cell line

Parental Cell Line

Human cell line supplied by the client

Validation Methods

RT-qPCR, Western blotting (WB)

Shipping

Shipped on Dry Ice.

Instructions For Use

This knockdown cell line should be paired with wild-type cell line for use.

Note: This product is for research use only.

Validation Data

SUPPORT

SUPPORT@GENUINBIOTECH.COM
TEL: +1-540-855-7041

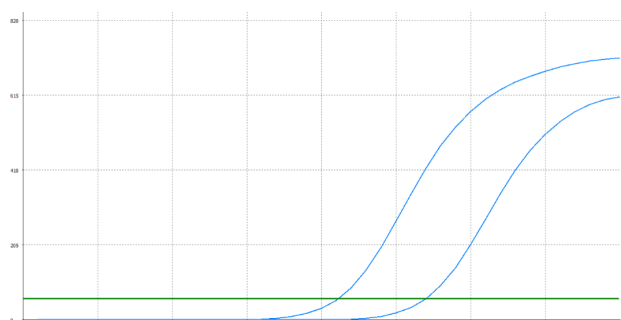
ORDERS

SALES@GENUINBIOTECH.COM
FAX: +1-540-855-7041

WWW.GENUINBIOTECH.COM

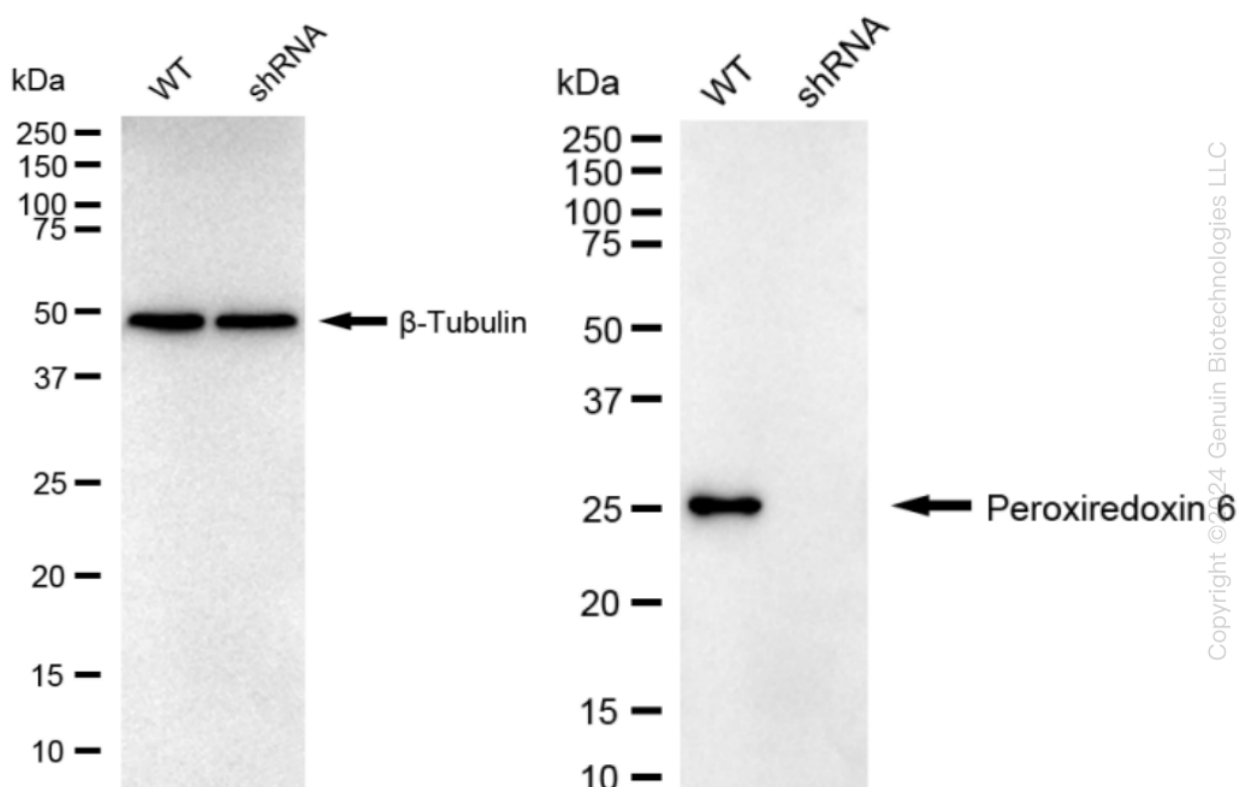
Human PRDX6 Knockdown Cell Line (WB-Validated)

PAGE 2



Genotype	Ct Value
Wild-Type	20.88
Knock-Down	26.43
$\Delta Ct (Ct_{KD} - Ct_{WT})$	5.55
% mRNA Reduction	↓ 98%

RT-qPCR analysis. HeLa cells were infected with PRDX6-specific shRNA lentiviral particles, total RNA was extracted from wild-type and knockdown cells, RT-qPCR was performed using gene-specific primers. $\Delta Ct (Ct_{KD} - Ct_{WT})$ was used to calculate mRNA reduction (%) between wild-type and knockdown cells using the following formula: $(1 - 1/2^{\Delta Ct}) \times 100\%$.



Western blotting analysis. PRDX6 protein expression in wild-type (WT) and shRNA knockdown (KD) HeLa cells was detected using Western blotting. β -Tubulin served as a loading control. The blots were incubated with primary antibodies against PRDX6 and β -Tubulin, respectively, followed by incubating with HRP-conjugated goat anti-rabbit secondary antibody. Images were developed using FeQ™ ECL Substrate Kit.

SUPPORT

SUPPORT@GENUINBIOTECH.COM
TEL: +1-540-855-7041

ORDERS

SALES@GENUINBIOTECH.COM
FAX: +1-540-855-7041

WWW.GENUINBIOTECH.COM