

Human PRDX3 Knockdown Cell Line (WB-Validated)



Catalog #: C62458

Aliases

Peroxiredoxin 3; AOP-1; Antioxidant Protein 1; SP-22; MER5; AOP1; Thioredoxin-Dependent Peroxide Reductase, Mitochondrial; Thioredoxin-Dependent Peroxiredoxin 3; Protein MER5 Homolog; Peroxiredoxin III; Prx-III; HBC189; Epididymis Secretory Sperm Binding Protein; Peroxiredoxin-3; EC 1.11.1.24; EC 1.11.1.15; PRO1748; SCAR32; PPPCD

Background

Gene Name: PRDX3

NCBI Gene Entry: [10935](#)

Storage

Store at liquid nitrogen for 1 year.

Kit Components

1. Human PRDX3 Knockdown Cell Line (Wb-Validated)
2. Wild-type cell line

Parental Cell Line

Human cell line supplied by the client

Validation Methods

RT-qPCR, Western blotting (WB)

Shipping

Shipped on Dry Ice.

Instructions For Use

This knockdown cell line should be paired with wild-type cell line for use.

Note: This product is for research use only.

Validation Data

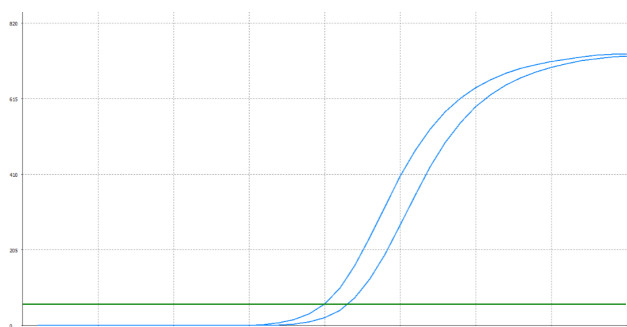
SUPPORT

SUPPORT@GENUINBIOTECH.COM
TEL: +1-540-855-7041

ORDERS

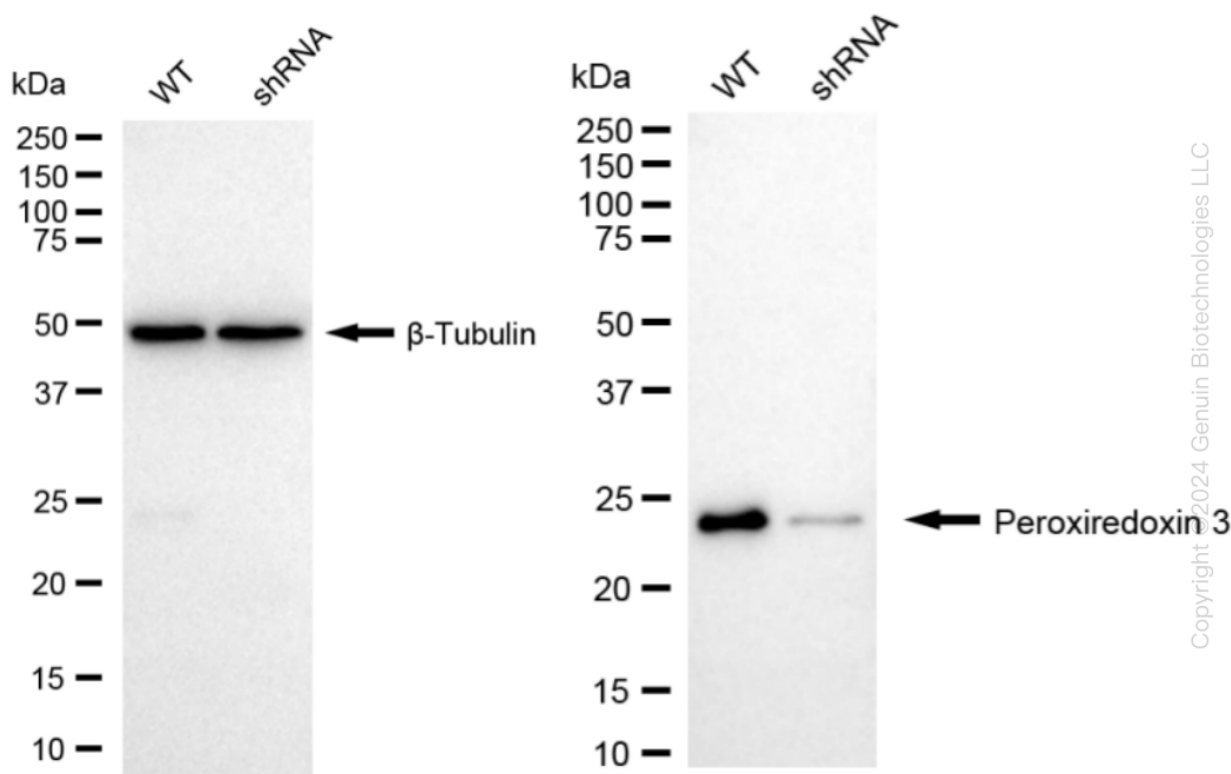
SALES@GENUINBIOTECH.COM
FAX: +1-540-855-7041

WWW.GENUINBIOTECH.COM



Genotype	Ct Value
Wild-Type	19.77
Knock-Down	21.31
$\Delta Ct (Ct_{KD} - Ct_{WT})$	1.54
% mRNA Reduction	↓ 66%

RT-qPCR analysis. HeLa cells were infected with PRDX3-specific shRNA lentiviral particles, total RNA was extracted from wild-type and knockdown cells, RT-qPCR was performed using gene-specific primers. $\Delta Ct (Ct_{KD} - Ct_{WT})$ was used to calculate mRNA reduction (%) between wild-type and knockdown cells using the following formula: $(1 - 1/2^{\Delta Ct}) \times 100\%$.



Western blotting analysis. PRDX3 protein expression in wild-type (WT) and shRNA knockdown (KD) HeLa cells was detected using Western blotting. β -Tubulin served as a loading control. The blots were incubated with primary antibodies against PRDX3 and β -Tubulin, respectively, followed by incubating with HRP-conjugated goat anti-rabbit secondary antibody. Images were developed using FeQ™ ECL Substrate Kit.